



## **UNDERGRADUATE PROGRAMS:**

**BACHELOR OF SCIENCE IN  
HEALTH SCIENCE**

**BACHELOR OF SCIENCE IN  
PUBLIC HEALTH**

**BSPH to MPH/MSPH 4 + 1  
BSHS to MPH/MSPH 4+1**

**MINORS IN PUBLIC HEALTH &  
HEALTH COMMUNICATION**

# **STUDENT HANDBOOK**

## **2025-2026**

**Updated August 2025**

## **Dean's Message**

Dear Student,

It is with great enthusiasm that we welcome you to the 2025-2026 academic year here at the University of Miami (UM) School of Nursing and Health Studies (SONHS). This promises to be an exciting year of challenging experiences and educational opportunities designed to provide you with the knowledge and skills to become a creative, competent, and compassionate graduate. At UM SONHS, we share the University's common purpose to transform lives through education, research, innovation and service. We are glad you are a part of the student body and look forward to meeting you and facilitating your academic journey towards achievement of the BSHS or BSPH degree—prepare for your life to be transformed!

This *Handbook* is designed as a guide to enable you to achieve your academic goals and to fully participate in student life at the University of Miami School of Nursing and Health Studies. This *Handbook* contains essential information including policies and procedures, expectations of students, program of study details and services for students that facilitate learning experiences.

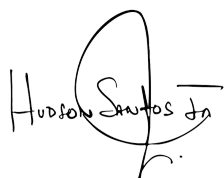
Each student is responsible for reading this *Handbook*, understanding the content therein, and abiding by its policies and procedures. Failure to have adequate knowledge of the *Handbook* content is not an excuse for inappropriate actions. The *Handbook* can be accessed on-line at the School of Nursing and Health Studies website at <https://www.sonhs.miami.edu/academics/student-handbooks/>.

Other publications that also contain essential information for you as a student are *the University of Miami Bulletin* and the *University of Miami Student Rights and Responsibilities Handbook*.

As a student, you are expected to focus your energy on meeting the opportunities and challenges presented by the faculty and courses in your chosen program. A major task for you to accomplish is to balance academic demands with your responsibilities associated with home life. Keep in mind your learning is not confined to the classroom but encompasses a variety of experiences in health care institutions and other community health care sites. Learning is life-long, so “learning to learn” is important!

We have an outstanding faculty who are committed to your success in your chosen career as a baccalaureate prepared public health or health science graduate who will make a significant contribution to the health care of the community and the nation. You have our best wishes for a productive and successful year.

Welcome to the School of Nursing and Health Studies. Go Canes!



**Hudson Santos, RN, PhD, FABMR, FAAN**

Dean and Professor, Dolores J. Chambreau Endowed Chair

**Arsham Alamian, PhD, MSc, FACE, FRSPH**

Associate Dean for Health Studies and Associate Professor

## **FORWARD**

The School of Nursing and Health Studies Student *Handbook* is a supplement to the *University of Miami Bulletin*, and the *University of Miami Student Rights and Responsibilities Handbook*. Students are responsible for acting in accordance with the University and the School of Nursing and Health Studies regulations and policies set forth in these publications. The School of Nursing and Health Studies Nursing *Handbook* also provides additional information specific to the nursing program.

The curriculum of the School of Nursing and Health Studies Student *Handbook* is reviewed periodically and is as accurate and current as possible. Should there be changes in academic policies, or procedures or curriculum, they will be communicated to you **via your official UM email address or via your updated Student Handbook**. Students should review the handbook at the beginning of each semester. If you have a problem or concern that is not adequately answered in the *Handbook*, please contact the Associate Dean for Health Studies.

Please visit the School of Nursing and Health Studies Website for the most up-to-date information at: <http://www.sonhs.miami.edu/>

## TABLE OF CONTENTS

|   |    |
|---|----|
| OVERVIEW.....   | 6  |
| Mission Statement.....  | 6  |
| Accreditation.....  | 6  |
| Administration .....  | 6  |
| UNDERGRADUATE HEALTH SCIENCE, AND PUBLIC HEALTH<br>PROGRAMS/EXPECTED OUTCOMES ..... | 7  |
| NON-NURSING SONHS PROGRAMS.....   | 8  |
| Independent Study Option .....  | 8  |
| International Course Option.....  | 9  |
| Requirements for Credit Elective in Foreign Regions.....                            | 9  |
| ADVISEMENT AND REGISTRATION.....  | 10 |
| Advising.....   | 10 |
| Registration .....  | 10 |
| General Education Requirements .....  | 11 |
| Background Checks .....   | 11 |
| Security .....  | 11 |
| Financial Planning and Assistance.....  | 12 |
| Tuition and Student Fees .....  | 12 |
| COMPUTER REQUIREMENTS.....  | 13 |
| Technical Support for Student Laptop.....   | 14 |
| Student Email System.....   | 14 |
| Student Computer FAQ's.....   | 15 |
| Student Computer Competency .....   | 18 |
| Available Resources.....  | 19 |
| Software for Online Courses.....  | 19 |
| GRADING SYSTEM .....  | 21 |
| Grading Scale.....  | 21 |
| Incomplete Courses.....   | 21 |
| Undergraduate Withdrawal Policy and Procedure.....                                  | 22 |
| Progressions .....  | 22 |
| Dismissal Policy.....   | 23 |
| Dismissal Appeals Procedure .....   | 25 |

|  |    |
|--|----|
| Non-Dismissal Academic Appeals Procedure .....                                 | 28 |
| Grade Appeals.....   | 28 |
| University Ombudsperson .....  | 29 |
| STUDENTS RIGHTS UNDER THE FAMILY EDUCATION RIGHTS AND PRIVACY ACT (FERPA)..... | 31 |
| TITLE IX.....  | 43 |
| COURSE AND CLASSROOM REQUIREMENTS.....   | 44 |
| Course Syllabus .....  | 44 |
| Textbooks.....   | 44 |
| Attendance .....   | 44 |
| Classroom Etiquette .....  | 44 |
| Make-Up Exams .....  | 45 |
| Reference Manual for Writing Papers .....                                      | 45 |
| ACADEMIC HONESTY POLICIES .....  | 45 |
| Ethics .....   | 45 |
| Honor Code.....  | 45 |
| Academic Integrity Policy for the School of Nursing and Health Studies .....   | 46 |
| Plagiarism .....   | 47 |
| Sanctions for Plagiarism .....   | 48 |
| PRACTICA EXPERIENCE REQUIREMENTS .....   | 48 |
| Attendance for Practica.....   | 49 |
| Malpractice Insurance .....  | 49 |
| Health Insurance Portability and Accountability Act (HIPAA) .....              | 49 |
| Professional Attire & Conduct.....   | 49 |
| Identification .....   | 50 |
| Transportation to Practicum Sites.....   | 50 |
| SIMULATION HOSPITAL ADVANCING RESEARCH & EDUCATION.....                        | 51 |
| STUDENT ORGANIZATIONS.....   | 52 |
| Health Science Students Association.....                                       | 52 |
| Multicultural Nursing Student Association (MNSA).....                          | 52 |
| School of Nursing and Health Studies Committees.....                           | 52 |
| PREPARATION FOR GRADUATION .....   | 53 |
| UNIVERSITY OF MIAMI COMMENCEMENT .....   | 53 |
| SCHOOL OF NURSING AND HEALTH STUDIES RECOGNITION CEREMONY .....                | 53 |

|  |     |
|--|-----|
| APPENDICES .....   | 54  |
| APPENDIX A: Bachelor of Science in Health Science Programs of Study..... | 55  |
| APPENDIX B: Bachelor of Science in Public Health Program of Study.....   | 78  |
| APPENDIX C: Minor in Public Health Requirements.....                     | 93  |
| APPENDIX D: Minor in Health Communication Requirements.....              | 96  |
| APPENDIX E: BSPH to MPH/MSPH 4 + 1 Program .....                         | 98  |
| APPENDIX F: BSHS to MPH/MSPH 4 + 1 Program .....                         | 100 |
| APPENDIX G: Release for International Study Forms .....                  | 102 |
| APPENDIX H: Students Requiring Academic Resource Assistance.....         | 110 |
| APPENDIX I: Drug Testing and Impaired Student Screening Policy .....     | 112 |
| APPENDIX J: Hurricane Emergency Preparedness Information.....            | 122 |
| APPENDIX K: University Student Support Services .....                    | 125 |
| APPENDIX L: Student Handbook Acknowledgment Form .....                   | 127 |

## OVERVIEW

Nursing education began at the University of Miami in 1948 with registered nurses admitted to the College of Arts and Sciences for the Bachelor of Science in Nursing (BSN). In 1952, the nursing program became a Department of Nursing within the College and began admitting generic nursing students. The BSN Program was approved in 1954 by the Florida State Board of Nursing and Registration. The BSN Program received initial national accreditation by the National League for Nursing in May 1956. In 1968, Nursing was transferred to the Medical Center and became a school, reporting to the vice-president for Medical Affairs. In 1976, seventeen students were enrolled in the new Master of Science in Nursing (MSN) Program. In 1980, the School of Nursing achieved the status of all other schools on the Coral Gables campus and the dean of the school began reporting directly to the provost and executive vice president. The MSN Program was accredited in 1982 by the National League for Nursing. In 2006, the BSN and MSN Programs received full accreditation from the Commission of Collegiate Nursing Education, the accrediting body of the American Association of Colleges of Nursing. In 1985, the PhD Program in Nursing admitted its first students. The program was one of only 25 doctoral programs in nursing at the time of its initiation. The first graduate completed her doctorate in December 1987. The school celebrated its 50<sup>th</sup> anniversary in 1998. The M. Christine Schwartz Center for Nursing Education had its groundbreaking in October 2004.

In 2005, the School of Nursing became the School of Nursing and Health Studies (SONHS) to reflect the additional responsibilities assumed for the interdisciplinary Health Science Program. The University of Miami School of Nursing and Health Studies offers courses leading to the degree of Bachelor of Science in Health Science. The health science tracks offered are Pre-Medical, Pre-Physical Therapy, Pre-Pharmacy, Pre-Occupational Therapy, Health Management and Policy and General.

The SONHS began a minor in Public Health in August 2010, available to all University of Miami students. In the Fall of 2012, the SONHS began the Bachelor of Science in Public Health (BSPH) program. One of the first programs nationally, this specialty baccalaureate degree incorporates core public health competencies and allows students to apply those competencies in local and international field experiences.

### **Mission Statement**

At the School of Nursing and Health Studies, we transform lives and health care through education, research, innovation, and service across the hemisphere.

### **Accreditation**

The BSPH program at the SONHS is fully accredited by the Council on Education for Public Health (CEPH). Currently there is no accreditation standard for the BSHS programs. Nevertheless, both the BSPH and the BSHS programs have received approval from the Southern Association of Colleges and Schools Commission on Colleges (SACSCOC).

### **Administration**

The administration of the SONHS is headed by Dr. Hudson Santos, Dean and Professor. The Associate Dean for Health Studies is Dr. Arsham Alamian. The Executive Director for the Office of Student Services is Mr. Jude Dhaiti.

## **BACHELOR OF SCIENCE IN HEALTH SCIENCE PROGRAM** **EXPECTED OUTCOMES**

1. Integrate knowledge from the natural and behavioral sciences, arts and humanities to the study of healthcare.
2. Interpret research findings relevant for careers in healthcare.
3. Recognize the importance of honoring diversity, acting with civility, practicing ethically, and promoting mutual respect as requirements for a career in healthcare.
4. Understand the impact of the physical, psychological, social, legal, and ethical environments of healthcare.
5. Apply the knowledge, intellectual competencies, and critical thinking to careers in healthcare.
6. Demonstrate the necessary written and verbal communication skills to effectively carry out a career in healthcare.

|  |
|--|
| <p style="text-align: center;"><b><u>BACHELOR OF SCIENCE IN PUBLIC HEALTH PROGRAM</u></b><br/><b><u>EXPECTED OUTCOMES/COMPETENCIES</u></b></p> |
|--|

**Foundational Competencies:**

1. Communicate public health information, in both oral and written forms and through a variety of media, to diverse audiences
2. Locate, use, evaluate and synthesize public health information

**Concentration Competencies:**

1. Apply knowledge from multiple disciplines to define and describe public health problems locally and globally.
2. Use principles of epidemiology to describe health and alterations in health.
3. Interpret quantitative and qualitative research findings in the medical, nursing, public health, and social science literature.
4. Examine the principal determinants of health problems facing the world's populations within social, economic, and political contexts.
5. Identify biological, behavioral, and social principles of health promotion and disease prevention across the life span.
6. Discuss the impact of the physical and social environment on health.



7. Describe the interactions between biological, psychological, environmental, and cultural factors influencing public health and disease prevention strategies.
8. Examine health care policy, finance, and regulatory environments with attention to health care disparities.
9. Demonstrate awareness of local health problems, determinants, and interventions in South Florida, with attention to vulnerable populations.

|  |
|--|
| <p style="text-align: center;"><b>NON-NURSING SONHS PROGRAMS</b><br/><b><u>HEALTH SCIENCE AND PUBLIC HEALTH PROGRAMS</u></b></p> |
|--|

Students in the School of Nursing and Health Studies are responsible for meeting the degree requirements, which can include lectures and/or practical that may be scheduled evenings and weekends. The student's responsibility is to understand fully and comply with all the provisions of the *University of Miami Bulletin* and written changes to the program of study. Students are provided assistance by advisors and faculty members. Requests for deviation from the program of study or school requirements are granted only by written approval from the Associate Dean for Health Studies. Students who are in violation of the provisions of the *Handbook* may be withdrawn unilaterally by appropriate School officials from classes, deleted as Nursing and Health Studies students, or have a stop placed upon their future enrollment.

The school reserves the right to change academic requirements and course offerings to ensure that students are receiving the latest knowledge. Changes are transmitted by written notice in the current year of the *School of Nursing and Health Studies Undergraduate Handbook* or by the Associate Dean for Health Studies.

All baccalaureate programs of study in health sciences and public health can be found in Appendices A and B. All options and requirements can also be found at [sonhs.miami.edu](http://sonhs.miami.edu).

### **Independent Study Courses**

Independent study courses are to be taken by students who have expressed a particular interest in a subject area and want to further their knowledge in that area under the guidance of a faculty member. Independent study courses may not take the place of a required health science or public health course or a required elective.

1. Prior to registration, the student must have entered a written Independent Study Contract with the faculty member. If there is a question of who might be appropriate for the student to ask, the student may discuss this with the Associate Dean for Health Studies. Once a faculty member has agreed to work with a student, a Contract must be initiated. The Contract will give a detailed description of the objectives and the work assignment to be completed in order to receive a grade for the course. The standard Contract can be obtained from and filed in the Office of Student Services.
2. The Contract must be negotiated, completed, and signed by all parties involved by the second

week of the semester of implementation. All contracts must be signed by the Associate Dean for Health Studies before the independent study can begin. Objectives for the independent study course, activities for meeting each objective, and method of evaluation are to be specified in the Contract.

3. From 1 to 4 credits per semester may be taken as independent study. Credits assigned are based on the depth and breadth of the topic and/or practicum experience selected. The number of credits will be determined collaboratively by the student and faculty and specified in the Independent Study Contract.
4. The independent study experience is graded as satisfactory or unsatisfactory or given a letter grade. (Approved School Council, 4/8/98; Approved Faculty, 5/12/98).

### **International Course Option**

The policies and procedures associated with taking international courses include international health experiences abroad. SONHS students engage in health care practice under an international system of health care and interact with different cultures throughout the practicum. UM SONHS students gain knowledge of international health, interact with other international students and faculty, and return with experiences contributing to the professional growth of our students. All students planning experiences abroad while enrolled at the UM SONHS must comply with the following policies and procedures.

### **Requirements for Credit Elective in Foreign Regions**

Prior to approval for foreign study, all students must:

- 1) Obtain approval from the faculty teaching the International Course elective.
- 2) Obtain a passport.
- 3) Comply with all health and immunization requirements for the practicum courses as specified in the student handbook.
- 4) Comply with the financial requirements for accommodations, travel expenses and living expenses as specified by the course faculty. All expenses must be paid in full by the specified dates.
- 5) Provide emergency contact numbers in foreign region and in the U.S.
- 6) The UM students who go to another country to study abroad must comply with the requirements set forth by Study Abroad Programs at <https://studyabroad.miami.edu> or 305-284-3434. The following forms must be completed:

Release Form  
Health and Safety Form  
Emergency Contact Form

If students are not traveling together, they should also complete the Travel Information Form.

All these forms can be found at the following website: <https://studyabroad.miami.edu/>

- Public health majors can apply a **maximum of six credits** from study abroad programs towards their public health major. These study abroad credits will count as part of the required 15 credits for the public health major that students can take outside of the School of Nursing and Health Studies at the University of Miami.

## ADVISEMENT AND REGISTRATION

### Advising

The Office of Student Services is available to assist students. Student advisors are available to provide academic counseling, career counseling, and assist in attaining tutoring. All new undergraduate students need to meet with the advisors to develop a program plan and course schedule. The advisors can address issues related to degree and course requirements, registration, and matriculation in the University. Students *have a responsibility to seek advisement* concerning their scheduling and registration needs throughout the undergraduate program. The Associate Dean for Health Studies works closely with faculty to assist students in their academic progression through their SONHS courses.

If students do not attain a passing grade in any course, they must meet with an advisor in the Office of Student Services.

Students in the process of completing prerequisite courses are **strongly** encouraged to see an academic advisor for registration consultation. Students are requested to have a tentative course schedule prepared before meeting with their advisor. Students who have not completed their prerequisites will be unable to register. **Prior to meeting with an academic advisor**, students should contact the Office of Student Accounts to verify that their accounts are clear. **Students with a “STOP” on their accounts will be unable to register.**

### Registration

In order to expedite the registration process, use of the MY UM Resource Hub is recommended for SONHS students unless otherwise specified. **Before registering on to myUM the student must receive advisement and PIN from the Office of Student Services.** If assistance with registration is needed, help is always available at the Office of Student Services. Students who have an “I” (incomplete), have not met prerequisites, or have failed any courses will not be able to register using the EASY system. Those students will need to be registered in the Office of Student Services. The following sections provide detailed information about requirements for registration for specific programs of study.

### General Education Requirements

All students must meet the University of Miami General Education including cognate requirements. Cognate and prerequisite requirements for the health science and public health programs are listed in the *University of Miami Bulletin*. It is the student’s responsibility to obtain advisement concerning meeting general education requirements.

### Background Checks

You may be required to complete a background check for local and international practica at the discretion of the agency or organization.

The following searches may be required for practica through the University of Miami:

1. Criminal History Record Search
2. Nationwide Sex Offender Registry
3. FBI fingerprint Screening
4. Impaired Student Screening Policy (See Appendix H)

There will be an additional charge for students with maiden/alias names for the criminal history search, as the maiden/alias name will also be checked.

Student background checks are kept separate from the students' academic file. All student background checks are secured in the Office of Student Services.

If you have any questions, please contact the Office of Student Services at 305-284-4325.

### **Security**

University of Miami security guards are on duty 24 hours a day at the Coral Gables and Medical Center Campus. Services provided by the Division of Security include parking, crime prevention, maintaining security systems, handling campus emergencies, and providing employees and students with identification and access cards.

Security can provide access to rooms designated for students that are locked at night (conference rooms, labs, etc.). A security guard is available to escort students at night between buildings, to the parking lots, and to Metrorail. Security also provides services to students with car problems (i.e. jumpstart, lockouts, towing). The Division of Security maintains detailed information, including campus alerts, on the following website: <https://umpd.miami.edu/>

The following are contact numbers for Security on the Medical Center Campus:

|                           |              |
|---------------------------|--------------|
| Emergency Assistance:     | 305-243-6000 |
| Non-Emergency Assistance: | 305-243-7233 |
| Security Escort:          | 305-243-7233 |

The following are contact numbers for Security on the Coral Gables Campus:

|                              |              |
|------------------------------|--------------|
| Coral Gables Police:         | 8-6666       |
| Fire, Rescue:                | 9-911        |
| Public Safety Non-Emergency: | *711         |
| Public Safety:               | 305-284-6666 |

I.D. badges must be worn at all times in UM/JMH facilities. Lost or stolen cards should be reported to the ID office at 305-284-3096 during the week. Lost or stolen cards may also be reported to security 24 hours a day, 7 days a week at 305-284-6666. The card will immediately be deactivated to prevent it from being used by unauthorized persons. Lost or stolen cards will be replaced for a \$25 fee. Damaged cards will be replaced for free upon presentation of the original card.

### **Financial Planning and Assistance**

The Office of Financial Assistance is available to provide students with direction in acquiring the funds necessary to complete their education. Limited scholarship funds are available.

Students who receive scholarships from the University should familiarize themselves with the scholarship renewal policy.

The majority of financial assistance obtained by students is through student loan programs sponsored by the federal government. The Office of Undergraduate Financial Assistance is available to help students understand the various loan options available and to assist them with financial planning and debt management. <https://finaid.miami.edu/>. Students can also contact the Office of Canes Central, at <https://canescentral.miami.edu/>

### **Tuition and Student Fees**

Annual tuition is assessed at the time of registration. One-half of the annual tuition may be deferred until January 1st of the second semester without penalty. Students with outstanding balances will not be allowed to register. All tuition and fee payments should be made directly to the Office of Student Accounts at the Coral Gables Campus.

Students who **do not** meet the University of Miami financial payment deadline are canceled immediately from the courses enrolled.

All SONHS students are required to pay the general university and specific School of Nursing and Health Studies student fees **if** enrolled in practicum coursework in the fall, spring or summer semester.

## COMPUTER BSPH/BSHS INFORMATION

### IMPORTANT HEALTH STUDIES COMPUTER INFORMATION

The School of Nursing and Health Studies requires all students to have a laptop and to sign up for the student email system before the beginning of classes.

#### LAPTOP MINIMUM REQUIREMENT

All Windows laptops must meet the following **minimum** requirements:

- 1.7GHz quad-core Intel Core i5 or greater
- Windows 10 \*\*
- 8GB RAM or greater
- 256GB Hard Drive or greater
- 802.11ac Wireless LAN card
- Integrated camera & microphone

All Apple notebooks must meet the following **minimum** requirements:

- 2.3 GHz dual-core Intel Core i5 or greater
- OS X 10.7 or higher
- 8GB RAM or greater
- 256GB Hard Drive or greater
- 802.11ac Wireless LAN card
- Integrated camera & microphone

\*\* Tablets such as iPads and Android devices are NOT compatible with Elsevier's HESI exams and cannot be used as a substitute device for the laptop requirement. Google Chrome notebooks are also not compatible with HESI exams.

Student laptops must be fully functional prior to arriving to class for an exam or quiz. It is highly advisable that they meet the model and specifications recommended by the University's Information Technology Department in order to qualify for the most comprehensive technical support available through the "Student Technology Help Desk" mentioned in the "*Technical support for student laptops*" section below. To ensure that these requirements are met, we **strongly recommend** that students purchase I.T. approved laptops through the Bookstore, located at:

1306 Stanford Drive

University Center (Go to 2nd floor inside the Bookstore for their technology section)

Phone: 305-284-4101

E-mail: [miami@bkstr.com](mailto:miami@bkstr.com)

Hours: Mon-Fri 8:30AM – 6:00PM; Sat 10:00AM – 5:00PM

Website: <https://www.bkstr.com/miamistore/>

#### Technical support for student laptops

Students should go to the “Student Technology Help Desk” (STHD), located at the Richter Library, 1300 Memorial Drive, room 325, as their primary source for technical support for their laptops. Their phone number is (305) 284-8887. This department provides the following services to all UM students:

- Dell Warranty Support
- On Campus Internet Configurations
- Virus/Spyware Diagnostics and Eliminations
- Operating System Restores/Reinstallations
- Data Backup Solutions

The STHD often experiences a high volume of students from ALL Schools throughout the University and cannot prioritize SONHS students over other schools. Therefore, you should bring your laptop in to them a **minimum** of 10 business days prior to your first exam so they have sufficient time to go through all the items on the technical checklist for SONHS students.

STHD hours of operation are Monday-Friday 9:00AM – 5:00PM. For more information, please refer to the following website:

<http://www.it.miami.edu/sthd/>

## STUDENT EMAIL SYSTEM

All registered UM students qualify for a free Gmail account. **If you experience any issues accessing the Gmail email account created for you by UM, please contact UM’s Central IT Help Desk at 305-284-8887, option 2.**

Visit <https://www.it.miami.edu/about-umit/projects-and-implementations/student-email-tenant/index.html> for more information.

### Features

- Anti-Virus and optional Anti-Spam filtering.
- Access your email from web browsers.
- Compatible with popular email clients such as Microsoft Outlook and Apple Mail.
- Access to your account from various mobile devices.
- Access all your personal contacts, calendar and To Do's in one location.

Once your Gmail email account is created, you can log into it at: <https://gmail.miami.edu>

# Computer Hardware and Software Policies and FAQs

## SONHS COMPUTER LAB INFORMATION

Room 123 M. Christine Schwartz Center for Nursing and Health Studies

### Computer Lab Policies and Rules of Use:

1. The computer lab hours are posted outside of room 123.
2. No one is allowed in the computer labs after hours.
3. Have your Cane-Card with you at all times.
4. The “Virtual Proctoring” cameras in the computer labs may be used for surveillance at any time.
5. No eating or drinking allowed in the computer lab.
6. Class research and assignments have priority.
7. Shirt and shoes required at all times.
8. No sound on the computers.
9. Cell phones must be turned off.
10. It is illegal to copy software from any SONHS computer. Unauthorized copying may harm the entire University community and the entire institution may incur legal liability.
11. Do not save any of your work to the computer; please use your own media to store your data. Any data stored on the computers will be deleted. You may bring a jump drive to save your work, or **email it to yourself**.
12. Printing in this computer lab can only be done through the University’s UPrint system. For more information on how to use it, please refer to <http://www.miami.edu/uprint>. For a full list of other computer labs with printing capabilities in the Coral Gables campus, please see: [https://studentsupport.it.miami.edu/uprint/prINTER\\_locations.html](https://studentsupport.it.miami.edu/uprint/prINTER_locations.html).

### Frequently Asked Questions (FAQs):

#### *Computer Labs*

1. *How do I log on to the computers in the School of Nursing and Health Studies Computer Labs?*

Log on to an available computer by using your CaneID. You must have a CaneID account to log on. You can obtain one online at <https://canelink.miami.edu>

2. *Who can assist me in the School of Nursing and Health Studies Computer Labs?*

If you need assistance with a computer in the lab, please contact the Lab Assistant (305-284-2518). For assistance with personal laptops, please refer to the “Student Laptop FAQ’s” section below.

#### *Information Technology Resources*

1. *What is an email alias?*

All UM students are automatically assigned an email alias. This alias is simply a pointer address which redirects your messages to whichever preferred email address you have specified in the CaneLink system.



**2. *How do I create an email account?***

All registered UM students will automatically have a free Gmail account created for them. If you experience any issues accessing the Gmail email account created for you by UM, please contact the Central IT Help Desk at 305-284-8887, option 2.

Visit <https://www.it.miami.edu/about-umit/projects-and-implementations/student-email-tenant/index.html> for more information. Once your Gmail account is created, you can log into it at: <http://email.miami.edu/>

**3. *Where can I go to for help with my email account?***

If you encounter any difficulty with your UM email account, please contact UM IT Help Desk at 305-284-8887.

**4. *How do I access the CaneLink system to see my grades and other student information?***

To use the CaneLink System, point your internet browser to <https://canelink.miami.edu> and enter your Login ID (UM Email) and Password.

**5. *Where can I receive assistance with the CaneLink system?***

For additional help using the CaneLink System, please contact the UM IT Help Desk at 305-284-8887.

**6. *How do I access Blackboard to view the web component of my classes?***

- Go to [www.miami.edu/blackboard](http://www.miami.edu/blackboard) and click LOGIN.
- The **UM Single Sign-On** screen appears. Enter your **University of Miami Login ID (UM Email) and Password**.
- Click Sign in. If you are unable to login, and you don't remember your **University of Miami sign in credentials**, visit the CaneID Self-Service webpage at <https://caneid.miami.edu/> and click on "**Login ID**" banner to easily view your information to retrieve your Login ID and/or click on **Forgot Password** to reset your password.

**7. *Who can I contact for help with Blackboard?***

The Learning Platforms has a help desk that supports the Blackboard system:

- Call 305-284-3949, MON-FRI: 9am-9:30am | SAT-SUN 10am-2pm
- Send e-mail to the Help Desk at [learningplatforms@miami.edu](mailto:learningplatforms@miami.edu).
- Visit <https://lpt.it.miami.edu/contact-us/index.html> for more support resources.

### ***Richter Library Resources***

**1. *How do I access the Richter Library's online resources?***

Please visit the Richter Library's home page at <http://www.library.miami.edu>.

**2. *Who can I contact for assistance with Richter Library resources?***

You may contact the Librarian assigned to SONHS, Saily Marrero, at (305) 284- 2040 or [sxm1838@miami.edu](mailto:sxm1838@miami.edu). Students may also request a consultation with a research librarian at <https://www.library.miami.edu/consultation-request.html>.

### ***Academic Advising***

**1. *How do I make an online appointment to see an advisor?***

Please contact the Office of Student Services at 305-284-4325 for more information about making advising appointments through the "Gradesfirst" online system at <https://umiami.campus.eab.com/home>.

### **Student Laptop FAQ's:**

**1. *Technical support for student laptops:***

Students should go to the "Student Technology Help Desk" (STHD, located at the Richter Library, 1300 Memorial Drive, room 325, as their primary source for technical support for their laptops. Their phone number is (305) 284-8887. This department provides the following services to UM students:

- Dell Warranty Support
- On Campus Internet Configurations
- Virus/Spyware Diagnostics and Eliminations
- Operating System Restores/Reinstallations
- Data Backup Solutions

The STHD often experiences a high volume of students from ALL Schools throughout the University and cannot prioritize SONHS students over other schools. Therefore, you should bring your laptop in to them a **minimum** of 10 business days prior to your first exam so they have sufficient time to go through all the items on the technical checklist for SONHS students.

STHD hours of operation are Monday-Friday 9:00AM – 5:00PM. For more information, please refer to the following website: <https://sthd.it.miami.edu>

**2. *Basic training offered for common computer software:***

The Academic Services division of Information Technology offers free computer related classes to the University community covering topics such as HTML, JavaScript, Introduction to the Internet, Microsoft Word, PowerPoint, PageMaker, and other software. These classes are approximately two hours long and include an informative lecture, hands-on exercises, and documentation. For more information, visit their website at:

<http://it.miami.edu/a-z-listing/information-technology-training/index.html> or  
<http://it.miami.edu/about-umit/divisions-and-subunits/applications-and-services/training->

[services/](#)

**3. Configuring UM's wireless network (CaneNet Wireless):**

Please refer to the following website for instructions on how to configure the wireless network:

<https://www.it.miami.edu/a-z-listing/canenet/index.html>

For additional support, please refer to the "Student Technology Help Desk" mentioned above.

## **Student Computer Competency**

**What computer skills should I have to be a successful student at the University of Miami School of Nursing and Health Studies?**

**You should be able to do all of the following activities:**

- ☐ Send and receive email using UM SONHS email account
- ☐ Send attachments with an email
- ☐ View, save, and print attachments to an email
- ☐ Download files, if necessary
- ☐ Upload files, if necessary (for example, to the Assignment window)
- ☐ Navigate the web using basic browser methods
- ☐ Post and reply to discussion threads in the Blackboard platform  
(free tutorial available on Blackboard)
- ☐ Use basic word processing skills (including Microsoft Office applications)
- ☐ Save in different file formats.

**You are also expected to use Email Etiquette:**

Please keep these basic netiquette rules in mind when you send email:

- ☐ Follow the specific instructor's directions regarding subject lines and attachments.
- ☐ Write complete sentences when sending an email message. Do not use "texting" abbreviations.
- ☐ Do not use all CAPITAL LETTERS.
- ☐ Check your spelling.
- ☐ Be courteous, and avoid offensive language.

**Note: All emails should be sent through your UM Gmail accounts.**

## Available Resources for Students

### FREE ONLINE COURSES:

- 1) LinkedIn Learning – Must log in with your Login ID to access LinkedIn Learning.

<https://lil.miami.edu> (Microsoft has acquired LinkedIn and Lynda.com, and has combined the best parts of both platforms into "LinkedIn Learning".)

- 2) UMIT Training for CaneLink, Workday, Microsoft Office, Photoshop, Acrobat, etc.

<http://it.miami.edu/a-z-listing/information-technology-training/index.html>

<http://it.miami.edu/about-umit/divisions-and-subunits/applications-and-services/training-services/>

PAID COURSES through UM's division of continuing education (<https://continue.miami.edu>):

- 1) UM Computer Foundations

#### Details:

The UM Computer Foundations course is designed for individuals who have no prior knowledge or experience with computers. The objective of this course is to get students past that awkward and embarrassing stage when they are frightened to ask questions or not even sure what questions to ask. This course will give the absolute beginner a solid understanding of what computers can and cannot do, and why they have become such an important and useful part of our daily lives. The course will also prepare students for the UM Office Professional course which teaches the core skills of Microsoft Office applications and will give students knowledge of all the computer skills needed in the modern office.

- 2) UM Office Professional program

#### Details:

The objective of this course is to certify that the student has a solid understanding of all the Microsoft computer applications needed to operate a modern office.

## Guide to Software Requirements for Online Courses

You may be enrolled in an on-line/distance learning course. As you know on-line is a flexible method of learning; however, in order to prevent any delays in your course work and learning, we require your computer to have certain capabilities. It is your responsibility to prepare your computer prior to your course's orientation and/or first day. You will be responsible if the computer fails during the course; no special arrangements in the course will be made if any technical delays are encountered. The course's faculty member will be collecting this form during the first week of the term.

### D) STUDENTS TAKING ONLINE COURSES

- a) The University of Miami provides the following software free of charge to all currently enrolled students. All SONHS students, especially those taking online courses, are encouraged to download and install them from [www.miami.edu/software/](http://www.miami.edu/software/):

- Microsoft Defender Advanced Threat Protection (ATP) – (includes Antivirus and Spyware protection)
    - After installing, students should update the Defender ATP antivirus definitions and then perform a “Full Scan” on their systems.
  - Microsoft Office (includes Word, Excel, PowerPoint, Access)
- b) SONHS students taking online courses should also have the following software installed on their systems:
- Adobe Acrobat Reader (free download from [www.adobe.com/reader/](http://www.adobe.com/reader/))
  - Chrome Web Browser (free download from <https://www.google.com/chrome/>)
  - FireFox Web Browser (free download from <https://www.mozilla.org/en-US/firefox/new/>)
  - Respondus Lockdown Browser (free download from [www.respondus.com/lockdown/information.pl?ID=527636896](http://www.respondus.com/lockdown/information.pl?ID=527636896))
  - iTunes (free download from [www.apple.com/itunes/download/](http://www.apple.com/itunes/download/))
  - Java (latest version) for compatibility with Collaborate (free download from [www.java.com](http://www.java.com))
  - For best audio results using Collaborate, a headset with integrated microphone is highly recommended. **A headset is also required now for some questions on the HESI exams.**
- c) Students will be using an electronic medical records system called EPIC. In order to streamline the orientation session for EPIC, we recommend you do the following ahead of time:
- 1) Install the Citrix Workspace app [for Mac](#) or [for Windows](#). Once downloaded, run the installer. It is a simple installation, just click next until it is complete.
  - 2) Go to the [GlobalProtect VPN download site](#), then click on the folder that corresponds with your operating system (Windows Or Mac) to download the correct GlobalProtect installer. Follow the GlobalProtect VPN installation instructions found [here](#).
  - 3) Connect to UM's network through GlobalProtect VPN, then access the LearnUchart environment:
    - Go to <http://learnuchart.med.miami.edu>
    - Click the “UChart Playground” icon.
- d) Student laptops should be registered to work with the University’s 802.11 wireless network called “CaneNet\_Wireless”.
- For instructions on how to connect your laptop with CaneNet\_Wireless, please refer to: <https://www.it.miami.edu/a-z-listing/canenet/index.html>
- CaneNet\_Wireless is the preferred network to use when taking wireless exams in a SONHS classroom.

## GRADING SYSTEM

### **Grade Point Average**

The SONHS adheres to the method of calculating the GPA as discussed in the current *UM Bulletin*: <https://bulletin.miami.edu/general-university-information/undergraduate-policies-and-procedures/grades/#text>

### **Grade Symbols**

The SONHS adheres to the definition of grading symbols as described in the *UM Bulletin 2025-2026*. <https://bulletin.miami.edu/>

### **Grading Scale**

Grading scale for NUR, HCS, BPH courses:

| <b>Numeric Grade</b> | <b>Letter Grade</b> | <b>Quality Points</b> | <b>Comments</b>                |
|----------------------|---------------------|-----------------------|--------------------------------|
| 98-100               | A+                  | 4.00                  |                                |
| 93-97                | A                   | 4.00                  |                                |
| 90-92                | A-                  | 3.70                  |                                |
| 87-89                | B+                  | 3.30                  |                                |
| 83-86                | B                   | 3.00                  |                                |
| 80-82                | B-                  | 2.70                  |                                |
| 78-79                | C+                  | 2.30                  |                                |
| 75-77                | C                   | 2.00                  |                                |
| 70-74                | C-                  | 1.70                  | <b>Below Passing—BSN*</b>      |
| 67-69                | D+                  | 1.30                  | <b>Below Passing HCS/BSPH*</b> |
| 64-66                | D                   | 1.00                  |                                |
| ≤ 63                 | F                   | 0.00                  |                                |

Grading Scale for BSHS and BSPH students: BSHS and BSPH students must obtain a grade of at least a "C-" (70%) in all required courses.

### **Undergraduate Bachelor of Science in Nursing (BSN) Students Taking Health Science and Public Health Courses**

Grading Scale for BSN students: BSN students must obtain a grade of at least "C" (75%) in all required nursing courses and HCS or BPH courses if taking these as electives.

### **Incomplete Grade/Course**

The SONHS adheres to the undergraduate and graduate School policy regarding an incomplete grade. See the UM Bulletin 2025-2026: <https://bulletin.miami.edu/>

## **Undergraduate:**

A grade of incomplete can only be given for incomplete work in passing status with the instructor's permission to complete the course. An "I" will be assigned only if the instructor is satisfied that there are reasonable non-academic grounds for the student's incomplete work.

Undergraduate Students who receive an incomplete grade in any prerequisite SONHS course **must complete the coursework prior to progressing** to the course for which it is a prerequisite.

## **Withdrawal from Courses**

1. Health Science and Public Health students may not withdraw from any course more than 1 time.

## **Undergraduate Complete Withdraw Policy and Procedure**

The University established a comprehensive policy for all undergraduate students who seek to withdraw from an entire semester of coursework. This policy requires students to submit their withdraw paperwork within 30 days from the end of the term; however, it is important students initiate this process as soon as possible as they may be held to the standard drop deadlines and refund policies put forth by the University. For more information on the University's complete withdraw policy, please refer to <https://success.miami.edu/student-withdrawal/>.

A student who seeks to withdraw from a complete semester of coursework should initiate the process with an Academic Advisor in the Office of Student Services. The Advisor will work with the student to discuss his/her reasons for withdraw and to address any concerns he/she has before he/she files official withdraw paperwork. If a complete withdraw is deemed to be the appropriate course of action, the Advisor will provide the student with the appropriate withdraw information and refer him/her to the 'Canes Success Center to initiate the official withdraw process. The "effective date" of the withdraw will only become official once the student makes contact with the 'Canes Success Center.

## **Progressions**

1. Once a student has been accepted to UM SONHS, all prerequisite courses must be taken at UM.
2. For progression in the Health Science and Public Health degree programs students must obtain a grade of at least "C-" ( $\geq 70\%$ ) in all required courses.

## **Dismissal Policy (from the UM SONHS Undergraduate Progressions and Policy Procedures manual):**

## **Grounds for Dismissal**

Students may be dismissed due to academic and/or non-academic reasons. The following circumstances are grounds for dismissal from the student's specialty program or the SONHS:

*Academic Grounds for Dismissal*

1. Failure to comply with UM and/or SONHS regulations, policies and/or procedures
2. Any act of cheating or academic dishonesty (see Undergraduate Honor Code)
3. Violation of the American Nurses Association's Code of Conduct for Nurses
4. Refusal to follow instructions of the faculty
5. Negligence resulting in damage to or defacement of UM SONHS property or of property belonging to, or located at, a clinical agency site
6. Destruction of, falsifying, or omitting information on University or clinical agency records
7. Unauthorized possession, use, access, copying, or reading of University or clinical agency records or unauthorized disclosure of information contained in such records to persons without a direct need to have this information
8. Unauthorized access or use of University or clinical agency computing and communication equipment
9. Unauthorized use, disclosure, viewing, or accessing of patient information and/or protected health information as defined in applicable state and federal laws, including the Health Insurance Portability and Accountability Act (HIPAA), or as dictated by the University's privacy policies and procedures
10. Plagiarism
11. Undergraduate Students
  - Failure of 2 nursing courses (C- or below) or any individual course twice: Students are allowed to repeat only one failed nursing course. Failure of two nursing courses with a grade of C- or below or failure of the same nursing course twice with a grade of C- or below constitutes failure of two nursing courses and the student will be dismissed from the program. A student who fails only one nursing course, retakes the failed nursing course and receives a passing grade on the second attempt at a failed nursing course and may progress through the program but the original failure is still counted as a failed course. If the student should fail another nursing course later in the program of study, then the student will not be allowed to retake the second failed course and the student will be dismissed from the program.
  - Withdrawal of more than two nursing courses (i.e. three grades of W) or any individual nursing course more than one time during the program.
  - Unable to meet technical standards.



- 11.1 The following are grounds for dismissal from the nursing major prior to Junior clinical coursework:
- Failure of more than 1 prerequisite course or the same prerequisite course twice (a grade of less than 2.0 on a 4.0 scale constitutes a failure of the prerequisite course). Students are allowed to repeat only one failed nursing course.
  - Cumulative UM GPA less than 3.0 at the point of progression into the junior year; or GPA less than 2.75 in the prerequisite courses.
- 11.2 A student in the Health Science or Public Health program who remains on probationary status after two consecutive semesters on Academic Probation shall be subject to Academic Dismissal. A student who has been on Academic Probation for one semester and has a cumulative GPA below 1.0 shall also be subject to Academic Dismissal. The decision to dismiss shall be made by the Academic Standards Committee of the School.

### *Non-Academic Grounds for Dismissal*

12. Bullying or harassing behavior toward any faculty, staff, student or patient
- Repeatedly ignoring a person or subjecting them to unwelcome attention, intimidation, humiliation, ridicule or offense
  - Physical threats or violence
  - Oral, written, or electronic threatening communications
  - Threatening gestures
  - Use of vile, intemperate or abusive language
13. Illegal or immoral conduct on or off University premises which would bring unfavorable attention to the University
14. Possession of any weapons, firearms, or explosives while on University or clinical agency premises
15. Unauthorized use, possession or distribution of intoxicants, illegal drugs, designer drugs, or controlled substances; use of or possession of other drugs which have adversely affected student performance on University or clinical agency premises
16. Reporting for, or being in the school or clinical site, while under the influence of drugs or alcohol, or the unlawful manufacturing, distribution, dispensation, possession and/or use of a controlled substance in the workplace or clinical agency
17. Failure to comply with a request for Drug and Alcohol Screening
18. Unauthorized removal or theft of University property or that of other facilities, students, or staff

### **Dismissal Appeals Procedure**

The steps below outline the process for dismissal appeals. Students will present their appeal request to the Office of Student Services. In general, all academic dismissal appeals will be reviewed first by UGASAC (Steps 1), then reviewed by the associate Dean (Step 2) and then by the Dean, as appropriate (Step 3).

**Step 1.** The student will make the appeal to the Office of Student Services who will present the academic dismissal issue to UGASAC. The UGASAC will review the circumstances for dismissal and confer with the appropriate faculty, administrators, and other appropriate individuals as necessary in making its recommendation to the Associate Dean. The student will be allowed to provide any information or documentation to UGASAC. In the process of making its recommendation, the Committee may request that:

- a. The student be interviewed, provide additional information or access to records, or appear before the Committee;
- b. The faculty and/or administrator be interviewed, provide additional information or access to records, or appear before the Committee.

**Step 2.** The UGASAC committee will forward its recommendation of dismissal to the Associate Dean for Health Studies or Undergraduate Nursing, as appropriate. The Associate Dean will review the circumstances for dismissal and confer with the appropriate faculty, administrators, and other appropriate individuals as necessary in making his/her decision. In the process of making his/her decision, the Associate Dean may decide to:

- a. Meet with the student and/or ask for additional information or access to records;
- b. Meet with the faculty and/or administrator and/or ask for additional information or access to records.

After reviewing the appeal, the Associate Dean may uphold or reject the decision to dismiss. The Associate Dean submits his/her decision in writing to the student.

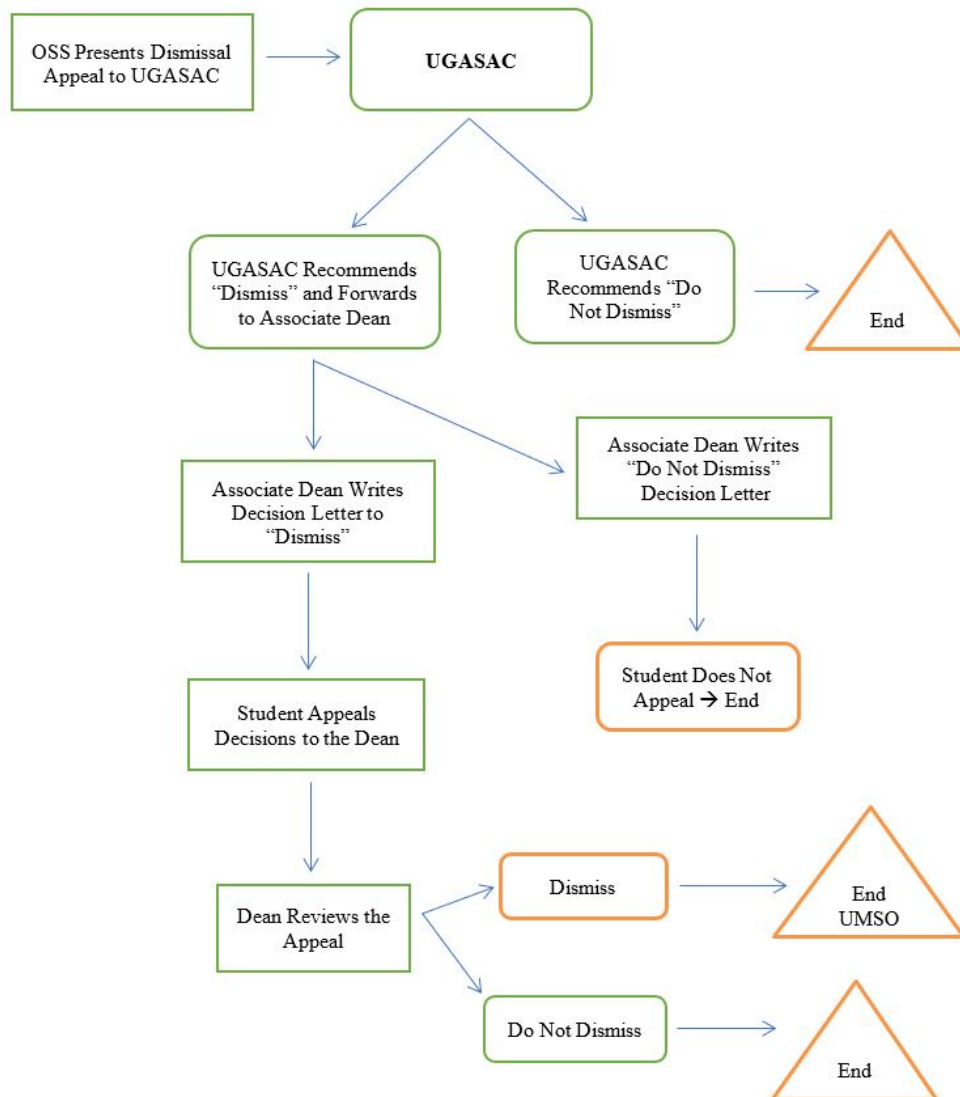
**Step 3.** The student may appeal the dismissal decision to the Dean of the SONHS. The appeal must be submitted in writing to the Office of the Dean within five business days of the Associate Dean's notification and must set forth the reasons for the appeal. Upon receipt and review of the appeal, the Dean at his/her option, may choose to meet with the student prior to issuing her/his decision. After reviewing the appeal, the Dean may uphold, modify, or reject the decision to dismiss. The Dean's decision on the appeal is final.

Once a decision has been rendered, the student has the right to redress the grievance through the academic University appeals process. This appeal process must be filed within a year of the occurrence of the academic action resulting in the appeal and prior to the completion of all degree requirements or withdrawal from the University (See Undergraduate Policy & Procedures at: <http://bulletin.miami.edu/general-university-information/undergraduate-policies-and-procedures/grades/#text>). This process begins with the student contacting the Office of the University Ombudsperson at (305) 284-4922 or [ombudsperson@miami.edu](mailto:ombudsperson@miami.edu).

Non-academic dismissals will not be reviewed by UGASAC, but instead, will go straight to the Dean for review, decision, and notification. The student may appeal the non-academic decision to the Dean of the SONHS, (Step 3).

If the appeal is based on or related to a charge made by the student of discrimination on the basis of race, color, national origin, religion, sex, sexual orientation, age, or disability, a representative of the appropriate University office will be contacted and, as appropriate, consulted in the appeal process. If the appeal is based on or related to a disability: 1) The ADA Coordinating Committee shall serve in an advisory capacity, and 2) The student is to include in the materials provided, the appropriate forms from the Office of Disability Services documenting: an evaluation of the disability and recommendations related to the disability.

## Student Grievance Process – Academic Dismissal



\* Once the decision has been rendered and if the student still believes that his/her case has been handled unfairly, the student has redress to the University of Miami appeals process.

## **Non-Dismissal Academic Appeals Procedure**

Students will present their appeal request, which includes: retro drop single class, residency rules, grade appeals, etc., to the Office of Student Services.

Written appeals must be filed within **five business days** of the occurrence of the academic action resulting in the appeal, and prior to the completion of all degree requirements or withdrawal from the University.

**Materials for the Appeal.** When bringing a matter for appeal, the student must place in writing issues she/he wishes to have considered with respect to the grounds for appeal stated above. The appeal must include:

- a. The conditions as seen by the student, offering a rationale for meeting grounds for an appeal, and any other supporting documentation relevant to the grounds for an appeal
- b. Documents of support (e.g., examinations, tests, papers, syllabi, evaluations, or any other documents relevant to the appeal).
- c. All written decisions of individual faculty/administrators that are available to the student or in the student's possession.

**Step 1.** The Office of Student Services will present a non-dismissal issue to the Undergraduate Academic Standing and Admissions Committee (UGASAC). UGASAC will review the circumstances for non-dismissal; confer with the appropriate faculty, administrators, and other appropriate individuals as necessary in making its recommendation to the Associate Dean. The student will be allowed to provide any information or documentation to UGASAC. In the process of making its recommendation, the Committee may request that:

- a. The student be interviewed, provide additional information or access to records, or appear before the Committee;
- b. The faculty and/or administrator be interviewed, provide additional information or access to records, or appear before the Committee.

### **Step 1.1 For Grade Appeal**

#### **UGASAC will only hear overall final posted grade appeals.**

The academic community is unanimous in its position that the grade an instructor assigns to a student is the instructor's responsibility and privilege. Any effort to alter this would be a violation of academic freedom. **The student should discuss all grade disputes with the instructor and make all efforts to resolve the grading issue prior to filing a formal appeal.**

If a grade dispute is not resolved through interactions with the instructor, then the student should attempt to resolve the grade dispute by discussing the dispute with the following people, in this order, **before filing a formal appeal:**

1. The Course coordinator (if applicable)
2. The Program Director (if applicable)
3. The Associate Dean of the student's program.

**Grounds for a grade appeal.** It is the instructor's responsibility to establish criteria for assigning grades. Grounds for appeal of how a grade was assigned are limited to:

1. Award of a grade based on the student's race, religion, color, sex, age, disability, sexual orientation, gender identity or expression, veteran status, national origin, or any other characteristic set forth in the University's Non-Discrimination Policy;
2. Award of a grade based on conduct that violates the University's anti-harassment or anti-retaliation policies; or
3. Failure to adhere to the grading criteria established in the course syllabus.

If, and only if, a dispute or problem is not resolved through interactions or discussions as noted above, then the student may file a formal written grade appeal to the UGASAC.

The Office of Student Services will present the overall final posted grade appeal documents to the UGASAC Chair. The UGASAC Chair will conduct an initial review for documented grounds for a final grade appeal. If above grounds for appeal are documented, the appeal will be presented to the committee at large for review.

**Step 2.** If the appeal is denied, the UGASAC committee will forward its recommendation of dismissal to the Associate Dean who will notify the student of the UGASAC recommendation.

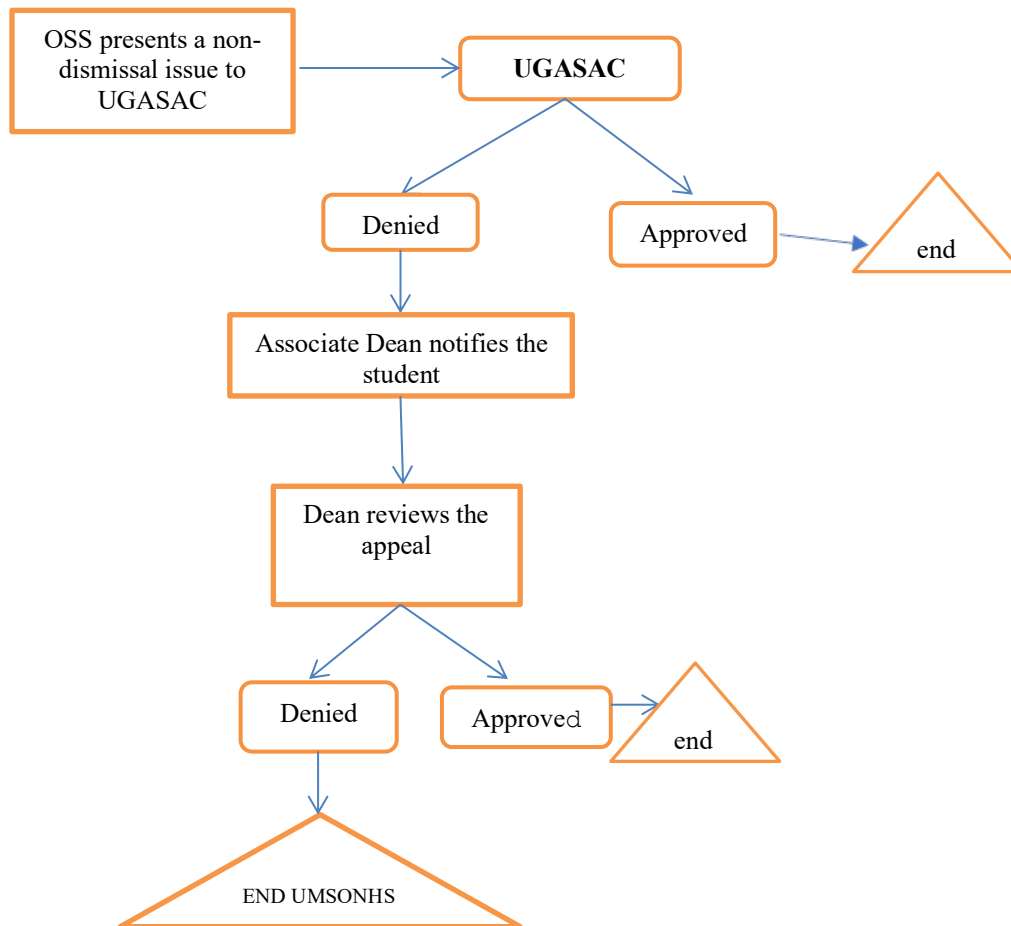
**Step 3.** The student may appeal the non-dismissal decision to the Dean of the SONHS. The appeal must be submitted in writing to the Office of the Dean within five business days of the non-dismissal decision and must set forth the reasons for the appeal. Upon receipt and review of the appeal, the Dean at his/her option, may choose to meet with the student prior to issuing his/her decision. On appeal, the Dean may uphold, modify or reject the non-dismissal's decision. The Dean's decision on the appeal is final.

Once a decision has been rendered, the student has the right to redress the grievance through the University appeals process. This appeal process must be filed within a year of the occurrence of the academic action resulting in the appeal and prior to the completion of all degree requirements or withdrawal from the University (See Undergraduate Policy & Procedures at: <http://bulletin.miami.edu/general-university-information/undergraduate-policies-and-procedures/grades/#text>). This process begins with the student contacting the Office of the University Ombudsperson at (305)-284-4922 or [ombudsperson@miami.edu](mailto:ombudsperson@miami.edu).

If the appeal is based on or related to a charge made by the student of discrimination on the basis of race, color, national origin, religion, sex, sexual orientation, age, or disability, a representative of the appropriate University office will be contacted and as appropriate, consulted in the appeal process. If the appeal is based on or related to a disability: 1) The ADA Coordinating Committee shall serve in an advisory capacity, and 2) The student is to include in the materials provided, the appropriate forms from the Office of Disability Services documenting: an evaluation of the disability and recommendations related to the disability

Decisions made by the University Honor Council or by Accessibility Resources will not be heard through the Undergraduate Academic Standing and Admissions Committee (UGASAC) appeal process. The student should appeal through the appeal processes of the University Honor Council or Accessibility Resources.

## Student Grievance Process – Academic Non-Dismissal



\* Once the decision has been rendered and if the student still believes that his/her case has been handled unfairly, the student has redress to the University of Miami appeals process.

## STUDENTS RIGHTS UNDER THE FAMILY EDUCATION RIGHTS AND PRIVACY ACT (FERPA)

### **I. PURPOSE:**

The purpose of these policies and procedures is to assure, at the University of Miami, access to any and all records kept by the University of Miami which are defined as "education records," as indicated in Section III. D below, and to assure the privacy of students by restricting the disclosure of information from education records to those persons authorized under the act.

### **II. NOTIFICATION TO STUDENTS:**

Students will be notified annually of their rights to access to all education records kept by the University of Miami, by publication of a summary of these Policies and Procedures. Copies of this Policy will be made available to any student upon request at the Office of the Registrar, UC 121 University Center. The policy can also be printed from our website at [www.miami.edu/hea](http://www.miami.edu/hea).

### **III. DEFINITIONS:**

A. "*Attendance*" at the University of Miami includes, but is not limited to:

1. Attendance in person and by correspondence including video conference, satellite, internet, or other electronic information and telecommunications technologies for students who are not physically present in the classroom; and
2. The period during which a person is working under the Federal Work Study Program.

B. "*Directory information*" includes the following student information: the student's name, address, telephone number, email address, major field of study, participation in officially recognized activities and sports, weight and height of members of athletic teams, photograph, date of attendance, degrees and awards received, and the most recent previous educational agency or institution attended by the student.

C. "*Disclosure*" is defined as permitting access to or the release, transfer, or other communication of education records including class schedule and roster of the student or the personally identifiable information contained therein, orally, in writing, by electronic means, or by any other means to any party.

D. "*Education Records*" means those records, which are:

1. Directly related to the student, and
2. Maintained by the University of Miami or by a party acting for the University of Miami.

**The term "education records" does not include:**

- a. Records of instructional, supervisory, and administrative personnel and certain educational personnel which are in the sole possession of the maker thereof and are not accessible or



revealed to any other individual except a substitute (with "substitute" defined as an individual who performs on a temporary basis the duties of the individual who made the record); example, instructor's grade book;

- b. Records of the University of Miami Department of Public Safety which are created and maintained by it solely for law enforcement purposes; PROVIDED that records of the University of Miami Department of Public Safety created and maintained by it for non-UM law enforcement purposes such as a disciplinary action or proceeding of the University are deemed education records;
- c. Records relating to an individual who is employed by the University of Miami which are made and maintained in the normal course of business, which relate exclusively to the individual in his or her capacity as an employee, and which are not available for use for any other purpose. This exclusion does not apply to an individual in attendance at the University of Miami who is employed as a result of his or her status as a student;
- d. Records relating to a student which are: created or maintained by a physician, psychiatrist, psychologist, or other recognized professional or paraprofessional person acting in a professional or paraprofessional capacity; are created, maintained, or used solely in connection with the provision of treatment to the student, and not disclosed to anyone other than individuals providing such treatment, PROVIDED that the record can be personally reviewed by a physician or other appropriate professional person of the student's choice." Treatment" in this context does not include remedial education activities which are a part of the program of instruction at the University of Miami;
- e. Records that are created or received by an institution after an individual is no longer a student in attendance and that are not directly related to the individual's attendance as a student.

E. "Parent" includes a parent, guardian, or an individual acting as student's parent in the absence of a parent or guardian. The University of Miami may presume the parent has the authority to exercise the rights inherent in this act unless the University has been provided with evidence that there is a court order or a legally binding instrument which provides to the contrary.

F. "Personally identifiable" means that data or information which includes:

- 1. The name of the student's parent, including mother's maiden name or other name or other family member.
- 2. The student's place of birth or current address,
- 3. The student's telephone number,
- 4. A personal identifier, such as a student's Social Security Number, student number or biometric record,
- 5. A list of personal characteristics which would make the student's identity easily traceable, or
- 6. Any information that, alone or in combination, is linked or linkable to a specific student that would allow a reasonable person in the school community, who does not have personal knowledge of the relevant circumstances, to identify the student with reasonable certainty.
- 7. Information sought by an individual who the institution reasonably believes knows the identity of the student to whom the education record relates.

G. "*Record*" means any information or data recorded in any medium, e.g. handwriting, print, tapes, film, microfilm, microfiche.

H. "*Student*" includes any individual with respect to whom the University of Miami maintains education records. The term does not include an individual who has not been in attendance at the University of Miami. An individual who has applied for admission to, but has never been in attendance at a particular component unit of the University of Miami, even if that individual is or has been in attendance at another component unit of the University of Miami, is not considered to be a student with respect to the component to which an admissions application has been made e.g., an undergraduate student at the University of Miami who has made application for Graduate School, Law School, or the School of Medicine, but who has been denied admission to any of those component units, does not have access to his or her admissions documents submitted to that component unit which has denied his or her admission.

#### **IV. STUDENT RIGHTS**

A. *Access*. Students in attendance at the University of Miami, and parents of such a student with prior written consent of the student, or without prior written consent if the student is a "dependent" (as defined under Section 152 of the Internal Revenue Code, meaning that the student is listed and qualified as a dependent on the parent's most recent tax return filed with the Internal Revenue Service), have access to, including the right of obtaining copies by paying copy fees as indicated in Section IX, any and all "educational records" maintained by the University of Miami, by following the procedures indicated under Section VII. Access may also be granted in compliance with a subpoena or in connection with some health or safety issue.

B. *Request to Amend Education Records*. A dependent student's parent or a student may request that the University of Miami amend education records if either believes that information contained therein is inaccurate, misleading, or in violation of the privacy or other rights of the student, by following procedures under Section VIII. Following such a request for amendment, the University of Miami will determine whether or not records will be amended within a reasonable period of time. Should the University decide to refuse to amend the record in accordance with the request, it shall inform the dependent student's parent or the student of such refusal and inform the parent or student of the right to a hearing.

C. *Right to a Hearing.* A dependent student's parent or a student may petition for a hearing to challenge the contents of an "education record" listed in Appendix A under the procedures established in Section VIII.

## V. DISCLOSURE POLICIES

A. The University will not disclose personally identifiable information from the education records of a student without the prior written consent of the student except:

1. *Personally identifiable information which has been designated as directory information:*
  - a. The student's name, address, telephone number, major field of study, participation in officially recognized activities and sports, weight and height of members of athletic teams, dates of attendance, degrees and awards received, the most recent previous educational agency or institution attended by the student.
  - b. The University of Miami will give public notice as to the information designated as directory information. The student has the right to prohibit the designation of any or all of the categories of personally identifiable information with respect to that student, provided that said student **notifies the Office of the Registrar in writing** that such personally identifiable information is not to be designated as directory information with respect to that student. **Notification must be made to the Office of the Registrar within three days after the student registers each semester.**
  - c. The University of Miami will disclose directory information from the education records of an individual who is no longer in attendance at the University of Miami without following the procedures under above Section B.
2. *To other school officials at the University, including teachers, who have been determined to have legitimate educational interests in seeking access to those records.*
  - a. "School officials" are defined as officers, employees and agents of the University of Miami." Agents" may include University Counsel and certain University students assigned to exercise a specific University function.
  - b. A contractor, consultant, volunteer, or other party to whom the University of Miami has outsourced institutional services or functions may be considered a school official under this paragraph provided that the outside party
    1. Performs an institutional service or function for which the University of Miami would otherwise use employees;
    2. Is under the direct control of the University of Miami with respect to the use and maintenance of education records; and
    3. Is subject to the requirements of §99.33(a) governing the use and redisclosure of personally identifiable information from education records.
  - c. "Legitimate educational interest" is defined as those interests related to the academic, personal and social development of the student while enrolled at the University of

Miami or as those interests related to legal, safety or health concerns of the University of Miami.

3. To a school in which a student intends to enroll. The University may also release information contained in the education record to another school if the student is simultaneously enrolled in that school and the University. However, the University will make a reasonable attempt to notify the student of the transfer of those education records and will provide a copy, upon request and the payment of a copying fee, of the records which were transferred.
4. To authorized representatives listed below, PROVIDED that such access is necessary in connection with the audit and evaluation of federally supported educational programs or in connection with the enforcement of or compliance with federal legal requirements which relate to these programs, or when such information is specifically authorized by federal law:
  - a. The Comptroller General of the United States;
  - b. The Secretary;
  - c. The U.S. Commissioner of Education, the Director of the National Institute of Education, or the Assistant Secretary of Education;
  - d. State educational authorities;
  - e. Authorized representative of the Attorney General for law enforcement purposes.
5. In connection with financial aid for which a student has applied or for which a student has received, PROVIDED that personally identifiable information from the education records of the student may be disclosed only as may be necessary for such purposes as:
  - a. To determine the eligibility of the student for financial aid;
  - b. To determine the amount of financial aid;
  - c. To determine the conditions which will be imposed regarding the financial aid; and,
  - d. To enforce the terms or conditions of the financial aid.
6. To state and local authorities to whom information is required to be reported pursuant to any state statute.
7. To organizations conducting studies for, or on behalf of, educational agencies or institutions for the purpose of developing, validating or administering predictive tests, administering student aid programs and improving instruction PROVIDED that such studies do not disclose the personal identification of students and their parents by individuals other than representatives of the organization, and that the information will be destroyed when no longer needed for the purpose of the study.
8. To accrediting organizations in order to carry out their functions.
9. To the Education Department's Family Policy Compliance Office ("FPCO").
10. To parents of dependent students as defined in Section 152 of the Internal Revenue Code of 1954. For purposes of making a determination as to the dependency of the student, the University will request that each student declare his or her dependency at the time of registration. This information will be maintained by the Registrar. In the absence of this information, and when circumstances may warrant disclosure or access to a parent, the University will first solicit from the student a declaration of dependency; failing this, the University will require a written affidavit from the student's parent certifying that the student

has been claimed as a dependent on the most recent income tax return filed with the Internal Revenue Service.

11. To comply with a judicial order, subpoena, or ex parte order PROVIDED that the University makes a reasonable effort to notify the student of the order or subpoena in advance of compliance therewith. There are instances in which the University will not be able to notify the student or student's parent of the existence of certain court orders, including a federal grand jury subpoena or a subpoena issued for a law enforcement purpose wherein the subpoena or court order indicates that the University is not to disclose to any person the existence or contents of the subpoena or any information furnished to a grand jury or law enforcement agency in response to the subpoena.
12. In compliance with the Campus Sex Crimes Act pertaining to the disclosure of information regarding registered sex offenders.
13. To appropriate parties in a health or safety emergency if knowledge of the information is necessary to protect the health or safety of the student or other individuals, taking the following factors into account:
  - a. The articulable and significant threat to the health or safety of the student or other individuals;
  - b. The need for the information to meet the emergency;
  - c. Whether the parties to whom the information is disclosed are in a position to deal with the emergency;
  - d. The extent to which time is of the essence in dealing with the emergency, and
  - e. The totality of the circumstances pertaining the threat to the health or safety of a student or other individual.
14. To a parent/legal guardian of a student, information regarding any violation of any federal, state, or local law, or any rule or policy of the University of Miami governing the use or possession of alcohol or a controlled substance, regardless of whether that information is contained in the student's education records if the institution determines that the student has committed a disciplinary violation with respect to such use or possession.

B. Redisclosure. Personally identifiable information from the student's education record may be disclosed under Section a. above, upon the condition that the party to whom the information is disclosed will not disclose information to any other party without the prior written consent of the student and the releasing office except that the personally identifiable information which is disclosed to an institution, agency or organization may be used by its officers, employers, and agents, but only for the purposes for which the disclosure was made.

## **VI. RECORD OF DISCLOSURE**

### **A. Maintenance of Record**

1. The University shall, for each request for and each disclosure of personally identifiable information from the education records of a student, maintain a record of such requests and disclosures to be kept with the education records of the student.
2. A record of disclosure is not required for disclosures of:
  - a. Directory information,
  - b. Disclosures of personally identifiable information to which the student or parent of a dependent student has granted written consent of access when the consent is specific with respect to the party or parties to whom the disclosure is to be made, and
  - c. Disclosures made to other University of Miami school officials pursuant to Section V.A. 2 above.

B. The record of disclosure shall include the following information:

1. The names of the parties requesting or obtaining personally identifiable information from the student's education records;
2. The titles of said parties seeking this information and the organization or agency they represent, if appropriate;
3. The legitimate interests (reasons) these parties had in requesting or obtaining the information;
4. The date of disclosure; and
5. The signature of the person making the disclosure.

C. The record of disclosures shall be maintained in the education record of the student and shall be considered to be a part of the education records; therefore, the record of disclosures must be retained as long as the education records of the student are retained by the University.

D. The record of disclosures may be inspected:

1. By the student or the parent of a dependent student;
2. By the school official and his or her assistants who are responsible for the custody of records; and
3. For the purpose of auditing the record-keeping procedures of the University by the following:
  - a. Other school officials within the University, including teachers, who have been determined by the University to have legitimate educational interests; and
  - b. Authorized representatives of:
    - i. The Comptroller General of the United States;
    - ii. The Secretary;
    - iii. State educational authorities: Subject to the conditions that any data collected by the aforementioned officials (i-iii) shall be protected in a manner which will not permit the personal identification of students and their parents by other than those officials named, and that personally identifiable data shall be destroyed when no longer needed for such audit, evaluation, or enforcement of or compliance with federal legal requirements.

## **VII. REVIEW AND INSPECTION**

A. A student who is or has been in attendance at the University may inspect and review his or her education records by making either an oral or written request of the University official who is responsible for maintaining those records. Whether the request is oral or written rests upon the discretion of the appropriate University official in each case. In no instance will a request not be fulfilled in excess of 45 days from the date of the request.

B. The student making a reasonable request for an explanation or interpretation of his or her records is entitled to the same from the appropriate University official.

C. If the student is unable to inspect personally his or her education records, the University is obligated to provide a copy of the record requested. The University may charge the student a fee for copies of records. (A fee schedule is contained in Section IX below.)

D. A University official or designated representative may be present during a student's review and inspection of any education records.

E. Parents of students who are currently claimed as "dependents" as defined under Section 152 of the Internal Revenue Code of 1954, are entitled to inspect and review the education records of the student without the written consent of the student. For the purposes of making a determination as to the dependency of the student, the University will request that each student declare his or her dependency at the time of registration. This information will be maintained by the Registrar. In the absence of this information, and when circumstances may warrant disclosure or access to a parent, the University will first solicit from the student a declaration of dependency; failing this, the University will require a written affidavit from the student's parent certifying that the student has been claimed as a dependent of the parent's most recent income tax return filed with the Internal Revenue Service. The University presumes that either parent has the right of access to the records of their dependent or minor child unless the University is provided with evidence that there exists a legally binding instrument governing such matters as divorce, separation, or custody, which provides to the contrary.

F. Limitations on the right to inspect and review education records.

1. Education records are records related directly to a student and maintained by the University. The following records may not be inspected or reviewed by students, former students or their parents:

- a. Records which are not educational records as defined in Section III.D.;
  - b. Financial records and statements of the parents of students or any information contained in such records or statements;
  - c. Confidential letters and confidential statements of recommendation which were placed in the education records of a student prior to January 1, 1975; PROVIDED that:
    - i. The letters and statements were solicited with a written assurance of confidentiality, or sent and retained with a documented understanding of confidentiality; and
    - ii. The letters and statements are used only for the purposes for which they were specifically intended;
  - d. Confidential letters of recommendation and confidential statements of recommendation which were placed in the education records of the student after January 1, 1975, and to which the student has, in writing, waived his/her right of access
    - i. Respecting admission to an educational institution;
    - ii. Respecting an application for employment; or
    - iii. Respecting the receipt of an honor or honorary recognition; PROVIDED that the student has waived his or her right to inspect and review those letters and statements of recommendation.
2. If the education records of a student contain information on more than one student, the parent of a dependent student or the student may inspect and review or be informed of only the specific information which pertains to that one student.

G. No records may be destroyed, regardless of age, when there is a pending request to review and inspect those records.

H. An individual who has not been in attendance at the University is not a student, and therefore does not have a right to inspect or review his or her records. A person who has applied for admission to, but has never been in attendance at another component unit of the University (such as the various colleges or schools which comprise the University) even if that individual is or has been in attendance at another component unit of the University, is not considered to be a student with respect to the component to which an application for admission has been made and therefore does not have a right to inspect or review his or her records with respect to that component unit of the University to which an application for admissions has been made.

## **VIII. PROCEDURES FOR SEEKING AN AMENDMENT TO RECORDS AND FOR STUDENT HEARING TO CHALLENGE THE CONTENTS OF EDUCATIONAL RECORDS**



#### A. Amendment of Records

1. A student who believes that information contained in his or her records is inaccurate, misleading, or in violation of the privacy or other rights of the student, may request that the University official who maintains the records amend them.
2. The University will decide whether to amend the education records of the student in accordance with the request within a reasonable period of time of receipt of the request. The official who maintains the records has a responsibility to consult with appropriate officials of the University for further determination or confirmation.
3. If the University decides not to amend the education records of the student in accordance with the request, it will so inform the student of the refusal, and advise the student of the right to a hearing under Section (B.) below.
4. A hearing under Section (B.) below may not be used to challenge the assignment of a grade; however, a hearing may be requested by a student to contest whether or not the assigned grade was recorded accurately in the education records of the student.

#### B. Hearing to Challenge Contents of Records

1. The University's Buckley Amendment Steering Committee will, upon request, provide an opportunity for a hearing in order to challenge the content of a student's education records to ensure that information in the education records of the student is not inaccurate, misleading, or otherwise in violation of the privacy or the rights of a student.
2. The hearing will be held within a reasonable period of time after the University has received the request, and the student shall be given notice of the date, place, and time reasonably in advance of the hearing.
3. The hearing will be conducted by an appropriate official of the University who does not have a direct interest in the outcome of the hearing.
4. The student will be afforded a full and fair opportunity to present evidence relevant to the issues, and may be assisted or represented by individuals of his or her choice at his or her own expense, including an attorney.
5. The University shall make its decision in writing within a reasonable period of time after the conclusion of the hearing.
6. The decision of the University shall be based solely upon the evidence presented at the hearing and shall include a summary of the evidence and the reasons for the decisions.
7. If, as a result of the hearing, the University decides that the information in the education records is inaccurate, misleading, or otherwise in violation of the privacy or other rights of a student, it will amend the education records of the student accordingly, and so inform the student in writing.
8. If, as a result of the hearing, the University decides that the information in the education records is not inaccurate, misleading, or otherwise in violation of the privacy or the rights of a student, it will inform the student of the right to place in his or her education records a

statement commenting upon the information therein setting forth any reason(s) for disagreeing with the hearing decision of the University.

9. Any explanation placed in the education records of the student under paragraph (8) of this section shall:
  - a. Be maintained by the University as part of the education records of the student as long as the record or contested portion thereof is maintained by the University; and,
  - b. If the education record of the student or the contested portion thereof is disclosed by the University to any party, the explanation will also be disclosed to that party.

## **IX. SCHEDULE OF FEES AND PROCEDURES FOR OBTAINING COPIES OF EDUCATIONAL RECORDS**

### **A. Procedures**

1. The right of access in some cases includes the right to obtain copies of the education records, when physical distance would prevent the actual viewing of the record. In those cases where distance would prevent actually viewing and inspecting the record copies may be requested by the dependent student's parent, or by the student, in writing, to the records.
2. The university will authorize copies to be made only in those cases where failure to provide copies would effectively prevent a dependent student's parents, or the student, from exercising the right to inspect and review the education records.

### **B. Schedule of Fees for Obtaining Copies of Education Records**

1. The copying fee for each side of a page, or of each page if a record is maintained on only one side of the page, is **\$.50 per side, subject to change upon appropriate notice**.
2. Copies are to be provided by the "responsible official" who is the custodian of record, upon receipt of a written request from the parent of a dependent student, or a student, and upon the payment of \$.50 per side of the document reproduced. Any and all moneys received for the copied of education records furnished by responsible officials will be deposited to the account number which is charged by this official for copying done by his or her school, department, or office.

## **COMPLAINTS**

*Complaints regarding violations of the rights accorded to students under this policy should be directed to the University Registrar, c/o Office of the Registrar, University of Miami, P.O. Box 248026, Coral Gables, Florida, 3312*

*Complaints failing resolution internally may be filed directly with The Family Policy Compliance Office, U.S. Department of Education, 600 Independence Avenue, SW, Washington, D.C. 20202-4605.*



## **TITLE IX**

### **I. WHAT IS TITLE IX?**

- A. To prohibit discrimination based on sex
- B. Prohibits sexual misconduct including:
  - 1. Relationship Violence
  - 2. Retaliation
  - 3. Sex-Based or Gender-Based Discrimination
  - 4. Sexual Assault
  - 5. Stalking
- C. See full policies and procedures [here](#).

### **II. REPORTING OPTIONS**

- A. [Sexual Misconduct Reporting Form](#)
- B. [Child Maltreatment Reporting Form](#)
- C. In-Person Report at the Title IX Office
  - 1. Newman Alumni Center, Second floor, Suite 230  
6200 San Amaro Drive  
Coral Gables, FL 33146
- D. For **emergencies**, call 911
- E. Call Coral Gables UMPD at 305-284-6666
- F. Call RSMAS Campus Safety at 305-710-7991
- G. Call Medical Campus Safety at 305-243-6000

### **III. CONTACT TITLE IX OFFICE & FAQs**

- A. For questions or concerns regarding Title IX please contact Title IX Coordinator, Beverly Pruitt, Or Deputy IX Coordinator, Maria Sevilla, at [titleixcoordinator@miami.edu](mailto:titleixcoordinator@miami.edu) or call (305) 284-8624. Click this [link](#) for answers to frequently asked questions regarding Title IX.

## COURSE AND CLASSROOM REQUIREMENTS

### **Course Syllabus**

At the first class session, a course syllabus is reviewed. For online courses, the instructor will meet with the students to review the course syllabus. The syllabus stipulates course policies, grading standards, and academic expectations of the course. Students are expected to be self-directed in completing the required readings and coming to class prepared to participate in the class learning experience. All course syllabi are posted via Blackboard (on the university website). The syllabus is a formal contract between the course instructor and the students.

### **Textbooks**

Required and recommended textbooks for each course are listed in the syllabus. Some health science and public health textbooks are used for more than one designated course and/or serve as reference resources throughout the SONHS programs.

### **Attendance**

The attendance policy is stated in the *University of Miami Bulletin, 2025-2026*. Regular and punctual attendance at classes and practicum learning experiences is expected of all students. Each professor will announce during the first meeting the professor's policies regarding pop quizzes, missed examinations, and late or missed work.

Lecture and practicum attendance is a very important aspect of meeting the objectives of the SONHS courses. In courses with practicum experiences, students are required to fulfill all practicum hours. Missed practicum days must be made up. Absences due to illness or extenuating circumstances need a note from a health care provider or official.

### **Classroom Etiquette:**

Arrive to Class On Time: Students must arrive to class on time.

Turn-Off Cell Phones and Other Electronic Devices: Students cell phones should never ring during class time.

Use Laptops Only for Class Work: Students are encouraged to use their laptop computers during class only as learning aids.

Participate in Class Discussions When Appropriate: Students are expected to respect the opinions of all class participants and to dialog in a professional and respectful manner.

Use Professional Language: Students are required to refrain from using offensive or foul language in class.

Do Not Bring Children or Pets to Class: Students are not allowed to bring either children or pets to class.

No Food in Class: Students are asked not to bring food items into the classrooms.

Stay the Entire Class: Students are expected to remain seated and engaged in classroom activities until the class has concluded.

Abide by the Honor and Conduct Codes: Students are expected to follow all aspects of the School of Nursing and Health Studies and University of Miami conduct codes.

### **Make-Up Exams:**

A time and place for make-up exams will be scheduled between the professor and the student in accordance with virtual proctoring. Students are required to do the makeup examination at this scheduled time and place with no exceptions.

Virtual proctoring is done with all exams scheduled at the SONHS building. All exams are videotaped. Students who violate the Academic Honesty Policy will be dismissed from the School of Nursing and Health Studies.

### **Reference Manual for Writing Papers**

All written papers for courses in the School of Nursing and Health Studies must be submitted following the guidelines in the latest edition of the *Publication Manual of the American Psychological Association (APA)*, Washington D.C.

## **ACADEMIC HONESTY POLICIES**

### **Health Science Code of Ethics**

All Health Science students are guided in their professional role by the principles of ethics that are established by the profession they are seeking as defined by their track and/or course of study. For example, Pre-med students are to be guided by the principles set forth by the American Medical Association (AMA, 2001); please see:

<https://www.ama-assn.org/about/publications-newsletters/ama-principles-medical-ethics>

### **Public Health Code of Ethics:**

All Public Health students are to be guided in their professional role by the Principles of the Ethical Practice of Public Health (Public Health Leadership Society, 2002). For a complete description of these principles, please see:

[https://www.apha.org/-/media/files/pdf/membergroups/ethics/ethics\\_brochure.ashx](https://www.apha.org/-/media/files/pdf/membergroups/ethics/ethics_brochure.ashx)

### **Honor Code**

SONHS faculty may or may not choose to refer honor code violations by students to the Undergraduate or Graduate Honor Council as appropriate. Faculty may impose their own sanctions for the honor code violation, e.g., failure of the examination, failure of the course, failing grade on a paper, computer-related work, or creative work, or failure of the practicum experience. Faculty also may recommend to the Dean or Dean's designee that students committing an honor code violation be dismissed from the SONHS.

### **Undergraduate Honor Code:**

The purpose of the undergraduate honor code is to protect the academic integrity of UM by encouraging consistent ethical behavior in assigned course work by students. The Undergraduate Honor Code may be accessed through;

[https://doso.studentaffairs.miami.edu/\\_assets/pdf/honor-council/the-undergraduate-honor-code.pdf](https://doso.studentaffairs.miami.edu/_assets/pdf/honor-council/the-undergraduate-honor-code.pdf)

### **Academic Integrity Policy for the School of Nursing and Health Studies**

#### 1. Definition of “cheating”.

**Cheating**: – This act implies an intent to deceive. It includes all actions, devices and deceptions used in the attempt to commit this act. Examples include, but are not limited to, copying answers from another student’s exam and using a cheat sheet or crib notes in an exam.

**Academic Dishonesty**: – This includes any other act not specifically covered that compromises the integrity of a student or intrudes, violates, or disturbs the academic environment of the University Community. Examples are attempting or agreeing to commit, or assisting in or facilitating the commission of any scholastic dishonesty violation.

**Students may be dismissed for any act of cheating or academic dishonesty.**

#### 2. Process for reporting cheating or academic dishonesty.

- A. If a student is caught in an act of cheating or academic dishonesty, the faculty member of the course is responsible for making the student aware of this concern at the time of the occurrence. This communication should occur in a reasonably private situation.

For example, if the student is caught cheating during an exam, the student must be made aware of this concern before the examination period ends. The student could be asked to remain in the room until after the examination is complete and all students have left the classroom before the concern is addressed. Or, the faculty member could escort the student from the room while proctors continue monitoring the examination.

- B. The act, including the discussion with the student, should be documented. Documentation should include sufficient detail related to the actual action of the student, actions taken by the faculty member, and the response of the students.

The faculty member should review the documentation with the student and ask the student to sign the document indicating acknowledgement. The student should be notified that the document will be forwarded to the Dean or Associate Dean for Undergraduate Programs for review.

- C. The Dean or Associate Dean for Undergraduate Programs will review all documentation and make a decision about what action will be taken in writing to the students. Consequences may include dismissal from the School of Nursing and Health

Studies.

3. Recommendations regarding examinations.

All faculty will adhere to the following general principles associated with examinations:

- A. SONHS students enrolled in courses with in-class computer administered evaluations (tests, quizzes, exams) must provide their own laptops.
- B. A seating chart may be created for examination periods.
- C. School of Nursing and Health Studies students should show a picture ID to either receive the examination, or at the time the completed examination is submitted.
- D. Each student should receive a blank sheet of paper prior to the exam to be used for calculation, etc. The student hands in the paper to the exam monitor upon completion of the exam.
- E. Exams will be videotaped. Students may be dismissed if cheating is videotaped.

**Plagiarism**

The SONHS has strict penalties against plagiarism. If a student is suspected of plagiarism, the matter is to be reported to the SONHS administration. It is at the discretion of the faculty member whether or not he/she refers the matter to the respective honor council. The following is what the SONHS faculty has designated as constituting plagiarism:

Plagiarism can be defined essentially as the deliberate act of taking the writings and/or ideas of someone else and representing them as your own. Plagiarism commonly takes three forms.

The most blatant form of plagiarism is the direct lifting of a passage from another book (encyclopedia, reference book, literacy criticism, and/or other printed sources) and including it in your paper as if it were your own work without using any quotation marks and/or without providing a proper citation. In addition, another direct and blatant form of plagiarism is that of obtaining information from electronic sources and submitting it as your own work.

A second form of plagiarism involves paraphrasing. Essentially, when you paraphrase, you take a passage from another book and change some of the words, altering the phrasing but not the meaning. Although some of the writing is now your own, paraphrasing differs only in degree from direct lifting a passage. Anytime you paraphrase material that is not your own, you should reference it. A third kind of plagiarism involves taking the major ideas from another book and incorporating them into your paper as if they were the products of your own thinking. Even though you may not have taken any lines directly from the source material, it is still considered plagiarism to use another's ideas while representing them as your own.

**Sanctions:**

Plagiarism is considered a serious offense in academic settings. In general, when plagiarism is discovered by a faculty member any one or more of the following responses are considered appropriate: (a) Failure of the assignment; (b) Failure of the course; (c) Referral to the appropriate



honor council; or (d) Dismissal from the SONHS and forfeiture of the degree.

If plagiarism is discovered after a course or program has been completed, one or more of the following responses may be recommended retroactively: (a) Failure of the course; (b) Failure of the program; or (c) Withdrawal of the degree (Approved School Council, 3/19/97; Reaffirmed, 2001).

### **APA Style:**

When papers are required in class, students must adhere to the latest formatting rules of style as articulated by the *Publication Manual of the American Psychological Association* (APA).

Selected APA web resources are listed below:

<http://www.apastyle.org/>

<http://owl.english.purdue.edu/owl/section/2/10/>

## **PRACTICUM EXPERIENCE REQUIREMENTS**

Students may be involved with either local or international practicum experiences. Scheduling varies by site and may include evenings or weekends. The following requirements are necessary for all students involved in these experiences.

### **Vaccination Requirements**

Students are required to demonstrate a history of immunization (or prior infection) against Influenza, Hepatitis B, Rubella, Rubeola, Varicella, Tetanus/Diphtheria, Poliomyelitis, and mumps. Students who intend to travel outside the United States should check with the Center for Disease Control to determine what immunizations and other measures should be taken prior to their travel. Students are required to undergo annual PPD testing to screen for exposure to tuberculosis. This service is provided by the student health office. If students have a history of a positive PPD reaction, or have received the BCG vaccine, they will be required to get one chest x-ray while enrolled in school to screen for active TB. The x-ray can be obtained through the student health office.

Furthermore, as COVID-19 continues to be a concern in communities across Florida, you will need to be fully vaccinated for COVID-19. Vaccination is a requirement of our clinical/practice site partners in order to have practice experiences at their sites. This requirement is consistent with the Joint Statement in Support of COVID-19 Vaccine Mandates for All Workers in Health and Long-Term Care which has been endorsed by more than 80 professional healthcare organizations (including the American Public Health Association and the American Nurses Association). As such, you will need to upload evidence of your COVID-19 vaccination into both Complio and student health records. Depending on the practice site, you may be required to upload this information in another location as well.

### **Attendance**

In the event of student illness, you must notify your practicum supervisor and your faculty instructor at least one hour prior to the start of the practicum.

Faculty will require validation of illness from the Student Health Service or a primary health care provider. Make-ups will be coordinated with the site supervisor and course faculty.

### **Malpractice Insurance**

All undergraduate students enrolled at the School of Nursing and Health Studies are required to have maximum liability coverage. All students must purchase liability coverage at the time of registration. This cost is automatically added to your fees. **If you are not financially registered** for classes, you do not have malpractice insurance and **will not be allowed to attend classes and practica**. Inability to attend required practicum experiences may result in being withdrawn from the course.

Students are required to purchase health insurance. If a student has health insurance coverage other than the UM Student Health Policy, verification of that outside coverage is needed.

### **Health Insurance Portability and Accountability Act (HIPAA)**

See <https://hsro.uresearch.miami.edu/submit-to-the-irb/forms-and-templates/forms/index.html> for instructions.

### **Professional Attire and Conduct**

The student is expected to present a clean, well-groomed appearance. In the spirit of professionalism, attire should be in keeping with the dress code at the practicum site.

The student will demonstrate patterns of professional behaviors, including the promotion of the actual or potential well-being of clients, colleagues, and self in the biological, psychological, sociological, and cultural realms; demonstration of accountability; and respect for the human rights of individuals.

Safe practice in practicum settings is expected at all times. A student whose pattern of behavior is found to be unsafe may be terminated from a practicum for reasons of unsafe practices at any time during the semester and receive a grade of "F" for the course. Examples of unsafe practice include but are not limited to the following:

- a) Failure to notify the agency and/or instructor of practicum absence.
- b) Failure to adhere to the dress code.
- c) Presenting for practicum under the influence of drugs or alcohol.
- d) Failure to meet course attendance requirements.
- e) Repeated tardiness to practicum assignments.
- f) Failure to consult practicum instructor prior to any changes on practicum assignments.
- g) Leaving the practicum agency without notifying appropriate personnel.

### **Identification**

A University of Miami (Cane Card) identification card (with photograph) (or site-specific identification) is required at every practica site (local or international), unless otherwise specified by the supervisor or faculty instructor.

### **Transportation to Practicum Sites**

For international practica, transportation will be arranged by the University. For local sites, students are **responsible for arranging their own transportation and parking fees (if any)** between the Coral Gables Campus, the Medical Campus and various other practicum facilities. Car pools are encouraged when possible. Metrorail passes may be purchased at the Information Desk on the first floor of the Whitten University Center. For more information, call the University Center Information Desk at 305-284-2318. Students are encouraged to plan accordingly for their transportation in order to **be on time** for classes and/or practicum experiences.

### **Computer Requirement**

BSPH students are required to have a laptop (not a tablet) for their BHP 490 Field Practicum in Community Health course.

### **UM Employee Health Office Contact Information**

Office Phone Number: 305-243-3400

Pager for On-Call Employee Health Nurse: 305-299-4684 (pager for Sandra Chen Walta)

Address: 1400 NW 10<sup>th</sup> Ave,

Dominion Tower, Suite 405

Miami, FL 33136

### **Reporting of Incident**

The practicum faculty member or preceptor shall assist the student in completing the “Accident Report Form” (ARF), which may be obtained from the office of the Associate Dean of Health Studies Program.

It is very important that the practicum faculty or preceptor fill this form out together with the student within 24 hours of the incident. Upon completing the ARF, the form should be printed (BEFORE SUBMITTING ONLINE TO RISK MANAGEMENT), and signed by both the practicum faculty or preceptor and the student. The practicum faculty or preceptor should then fax the **signed** ARF to: (305) 284-3405, Attention: Pilar Schuitema, Risk Management Office. All pertinent information may be added to the ARF as this will assist Ms. Schuitema in the follow-up management of the incidence.

The practicum faculty or preceptor should notify the Associate Dean for Health Studies within 24 hours after the incident has occurred.

### **Costs of Post Exposure Evaluation**

All costs related to the evaluation, testing and standard treatment after an exposure incident shall be covered by the University of Miami through an insurance policy maintained by the School of Nursing and Health Studies subject to limits and exclusions set forth in such policy. Costs incurred from services rendered by the UM Employee Health Office and/or other healthcare facilities that is not covered under such policy will be the responsibility of the University of Miami’s School of Nursing and Health Studies.

|  |
|--|
| <b>SIMULATION HOSPITAL ADVANCING RESEARCH AND EDUCATION (SHARE™)</b> |
|--|

Human patient simulation experiences are an integrated part of the education at the University of Miami School of Nursing and Health Studies. BSHS and BSPH students may have an opportunity to participate in simulation and skills labs during their undergraduate experience. Each course has specific simulation and skills labs requirements that are outlined in the course syllabus. Additional policies and procedures specific to simulation are located within the designated simulation blackboard course site.

## **STUDENT ORGANIZATIONS**

### **Health Studies Student Association (HSSA)**

The Health Studies Student Association is designed to perpetuate the ideals and aspirations for different health care professions. Members participate in a variety of activities. Involvement in the local governing activities of the association plus attendance at state and national meetings prepares students for future professional involvements.

### **Multicultural Nursing Student Association (MNSA)**

The mission of MNSA is to unify nursing students at the University of Miami through the common interests and goals of academic success, professional awareness, and health promotion, focusing on the unique needs of the multicultural nursing students and the multicultural community as a whole.

#### **Organization Overview:**

MSNA is for any student that has an interest in nursing and promoting awareness of health disparities as well as advocating for Nurses of all different backgrounds. Objectives:

- A. Unite students of all health professions in our common mission.
- B. Enrich the academic and social experiences of nursing students at the University.
- C. Provide an entity that addresses the specific needs of the multicultural nursing student.
- D. Maintain a close relationship with our local state MSNA chapter.
- E. Involve students in a variety of health promotion activities.
- F. Increase health awareness among students and the general public.
- G. Enhance the health care of minority communities and under-served individuals.
- H. Facilitate access to health and social resources.

### **School of Nursing and Health Studies Committees**

Students are elected to serve on committees of the School of Nursing and Health Studies. The election process is accomplished during the beginning of the Fall Semester.

The following School of Nursing and Health Studies Standing Committees have student membership:

#### **Curriculum Committee**

The Curriculum Committee is responsible for developing, implementing, and evaluating the curriculum of the different program areas of the School of Nursing and Health Studies.

## **PREPARATION FOR GRADUATION**

It is the individual responsibility of each student who is entering the semester of graduation to order graduation regalia through the Student Services office at the School of Nursing and Health Studies.

Students can also order graduation invitations at that time. Students will be informed of dates and other pertinent information through email and announcements in class.

A student who expects to graduate in a given graduation period must make application in writing on forms provided by the Office of Enrollment Studies or via web forms during registration. Graduation applications must be completed in order for the student to graduate. The last date to apply for graduation is published in each *University of Miami Bulletin*, and in calendars published at the beginning of each academic year.

## **UNIVERSITY OF MIAMI COMMENCEMENT**

Diplomas are awarded to graduates receiving their Bachelor of Science in Nursing, Bachelor of Science in Health Science, or Bachelor of Science in Public Health degree during the University of Miami Commencement exercises in December and May.

## **SCHOOL OF NURSING AND HEALTH STUDIES RECOGNITION CEREMONY**

The School of Nursing and Health Studies Recognition Ceremony is a meaningful occasion at which the academic community is called together each year to recognize and honor the achievements of graduate and undergraduate students and faculty. All students are encouraged to participate in this school function. Students will be informed of details of this ceremony by the Office of Student Services.

# APPENDICES

# **APPENDIX A**

## **Bachelors of Science in Health Science Programs of Study**



Please consult your 2025-2026 Student Handbook for the applicable curriculum and program policies. Please note that courses and policies are subject to change throughout the academic year. Check with the Office of Student Services at the School of Nursing and Health Studies for current materials.

The University of Miami School of Nursing and Health Studies offers courses leading to the degree of Bachelor of Science in Health Science. Baccalaureate education provides the foundation for further education in specialized health professional fields. The following tracks are offered: Pre-physical therapy, Pre-pharmacy, Pre-medicine, Pre-occupational therapy, Health Management and Policy, and General.

## **ACADEMIC POLICIES**

### **REQUIREMENTS FOR ADMITTED STUDENTS**

Required courses for the Health Science degree include courses in biology, chemistry, physics and mathematics (where required by the track), and health science with a minimum grade of C- in each course. Students must satisfy both the general education requirements listed below and the requirements of a specific track, to be awarded the Bachelor of Science in Health Science degree. Students must maintain at least a 2.8 GPA in the courses listed under the track requirements with no grade below a C-.

## **ACADEMIC PROGRAMS**

The School of Nursing and Health Studies will award a Bachelor of Science in Health Science once a student has completed the requirements listed below.

The Health Science Program offers curricula that are designed to prepare students for health professional or graduate education programs. Programs of study can be tailored for students wishing a variety of health professional options. Students are encouraged to contact graduate programs directly to ascertain if there are specific course requirements that might differ from health science track requirements. Any course requirements may be added to a student's undergraduate curriculum track.

## **GENERAL EDUCATION**

### **REQUIREMENTS**

#### **AREAS OF PROFICIENCY**

The Areas of Proficiency requirements ensure that students either already possess, or develop at the University, the ability to express themselves effectively, to use mathematics with facility, and to reason cogently.

#### **Written Communication Skills**

Effective writing skills advance ideas efficiently and persuasively, so the expectation is that students become adept at using writing as an effective communication tool.

#### **Requirements**

Students fulfill this requirement by completing [WRS 105](#) and [WRS 106/WRS 107/ENG 106](#) (Note: SAT or ACT verbal scores can be used to waive the [WRS 105](#) requirement; credit will not be awarded for the waiver. Students who enter UM with credits for [WRS 105](#) or [WRS 106/WRS 107/ENG 106](#) may take [WRS 208](#) to finish this requirement).

## Outcomes

By completing the Written Communication Skills requirement, students will be able to:

1. Demonstrate effective written communication skills in relation to specific rhetorical tasks.
2. Construct original, well-reasoned arguments using a range of materials.
3. Integrate and synthesize appropriate and relevant primary and secondary sources in their writing.

## Quantitative Skills

In a world increasingly influenced by science and technology, it is important for students to acquire the capacity to understand and use essential quantitative skills. The Quantitative Skills Proficiency Requirement helps students learn to use quantitative skills and tools to solve problems, including the interpretation, manipulation, and application of quantitative data.

## Requirements

Students fulfill this requirement by completing a course in each of the following areas:

**Calculus:** [MTH 141](#), [MTH 161](#), or [MTH 171](#)

**Computer Science:** 1 CSC or BTE course

**Statistics:**

- a. Health Management and Policy Track: [MAS 201](#) or other approved statistics course
- b. All other tracks: [HCS 202](#) or other approved statistics course

Math placement criteria is established affected by the [Department of Mathematics](#). The following items may affect students' math placement at the UM: SAT and ACT scores, ALEKS math placement scores, and AP, IB, dual enrollment, and transfer credits. Students should review the information listed on the [Department of Mathematics](#) website and consult with an academic advisor in the [Office of Student Services \(OSS\)](#) if they have any questions.

## Outcomes

By completing the Quantitative Skills requirement, students will be able to:

1. Select and use appropriate quantitative methods and tools to solve problems; and
2. Interpret, manipulate, and apply quantitative data to solve problems.

## Areas of Knowledge (Cognates)

The Areas of Knowledge requirement is intended to help students understand and appreciate intellectual achievements in major areas of human inquiry and creative endeavor. Students can satisfy this requirement through the majors, minors, or cognates.

In the Cognates Program, students examine creative expression in the arts, literature, and philosophy; study human development and behavior; and explore the mathematical, scientific, and technological world. Students fulfill an Area of Knowledge requirement by completing a cognate

in one of the three areas of the university curriculum: Arts & Humanities (A&H); People & Society (P&S); and Science, Technology, Engineering & Mathematics (STEM). A cognate normally requires nine credits of coursework, and can be either a thematic or an individualized cognate. Thematic cognates consist of courses grouped by theme, while individualized cognates consist of courses that have the same area of knowledge designation. Completed cognates are listed on the students' transcripts.

As an alternative to using a cognate to fulfill an Area of Knowledge requirement, a major or minor may be used to fulfill the Area of Knowledge requirement. Approved thematic cognates can be found using the [cognate search engine](#) which allows students to search for thematic cognates based on cognate features, courses, and keywords. Each thematic cognate is administered by a department or program designated as the "Responsible Academic Unit" (RAU). Inquiries about a thematic cognate should be directed to the cognate's RAU. Several cognates may include the same courses; however, one course cannot be used to complete multiple cognates. For more information on cognates, go to the "General Education Requirements" section of the Academic Bulletin or visit <http://www.miami.edu/cognates/>.

## **Arts & Humanities**

Arts & Humanities cognates engage students in the study of the most enduring and influential works of art, imagination, and culture. Through study, creation, and performance, courses in this area enable students to understand the works of artists, musicians, novelists, philosophers, playwrights, poets, historians, and theologians. These courses cultivate the ability to interpret, critically evaluate, and experience the creative products of human culture and expression.

### **Requirements**

Complete one Arts & Humanities cognate.

### **Outcomes**

By completing the Arts & Humanities requirement, students will be able to:

1. Critically evaluate and interpret the creative products of humanistic and artistic expression, applying appropriate vocabulary and concepts for their description and analysis
2. Understand the creation and performance of art

## **People & Society**

People & Society cognates help students understand and analyze the organization of society and the patterns of social change, in the past and in the contemporary world.

### **Requirements**

Complete one People & Society cognate.

### **Outcomes**

By completing the People & Society requirement, students will be able to:

1. Analyze the organization of society
2. Analyze patterns of social change

## Science, Technology, Engineering, and Mathematics (STEM)

STEM cognates develop students' abilities to think critically about mathematical, scientific, and technological issues by understanding the processes and methods of scientific inquiry involved in experimentation, observation, and quantitative analysis. The STEM cognates nurture literacies that enable students to make informed decisions in an increasingly complex world.

### Requirements

Complete one STEM cognate. The health science major may be used to fulfill this cognate area.

### Outcomes

By completing the STEM requirement, students will be able to:

1. Understand the use of quantitative tools, experimentation, and observation to analyze and solve mathematical, scientific, environmental, and technological problems
2. Interpret quantitative data and draw useful conclusions

## Individualized Cognates

Students may create an individualized cognate to fulfill an Area of Knowledge requirement. All of the courses used in an individualized cognate must have the Area of Knowledge attribute in CaneLink for the requirement that they are being used to fulfill, even if they are transfer credits. If a course has been approved to be utilized in an individualized cognate, an Area of Knowledge attribute will be listed in CaneLink. No exceptions will be accepted. A searchable list of courses eligible to be used in individualized cognates is available [here](#).

Individualized cognates use the following academic plan codes: AT\_0080 (Arts & Humanities), PS\_0070 (People & Society), and ST\_0026 (STEM).

## Advanced Writing and Communication Skills: Health Studies

The Advanced Writing and Communication Skills requirement empowers health science students to develop their communication skills, both written and verbal, enabling them to better articulate information relating to health science, nursing, and public health.

### Requirements

To fulfill this requirement, students must complete five designated writing-intensive courses. Several health science requirements and/or electives may qualify as writing-intensive.

## Health Studies Courses that Require Formal Student Writing or Presentation

The following SONHS courses carry writing and presentation components and may count for the BSHS program:

---

| Course | Writing Assignment | Student Presentations |
|--------|--------------------|-----------------------|
|--------|--------------------|-----------------------|

|                                |   |  |
|--------------------------------|---|--|
| <a href="#"><u>BPH 301</u></a> | Two reflective papers, Pop culture analysis paper, Sex research paper, 4 written homework assignments | Research presentation                              |
| <a href="#"><u>BPH 309</u></a> | Three reflective papers   | Final student presentation                         |
| <a href="#"><u>BPH 310</u></a> | Seven P&P assignments, Literature review proposal, Literature review synthesis paper                  | P&P final presentation, Data visualization         |
| <a href="#"><u>BPH 321</u></a> | Two reflective papers, Literature review matrix, Public health logic model, Intervention paper        | Public health intervention presentation            |
| <a href="#"><u>BPH 322</u></a> | Policy Analysis Paper   | HiAP Presentation                                  |
| <a href="#"><u>BPH 419</u></a> | Two reflective papers, Two service-learning journals  | One poster presentation, One research presentation |
| <a href="#"><u>BPH 490</u></a> | Two reflective papers, Final written project  | Poster presentation                                |

## Outcomes

By completing the Advanced Writing and Communication Skills requirement, students will be able to:

1. Effectively communicate information related to public health in both speech and in writing, using appropriate information sources, presentation formats, and technologies.
2. Demonstrate the necessary written and verbal communication skills to effectively carry out a career in healthcare.

## Plan for Assessment

### Student Performance on Written Assignments and Presentations

In order to graduate from the BSHS program students must successfully pass two courses in Written Communication Skills (i.e., [WRS 105](#) and [WRS 106/WRS 107/ENG 106](#)) as well as five writing-intensive courses with a grade greater than or equal to 70%. Grading of student written assignments and oral presentations are based on defined rubrics. These courses may be applied to the BSHS program as outlined in the major requirements. A number of elective courses in the BSHS curriculum also require students to submit significant written assignments and give oral presentations throughout the semester. Throughout the BSHS curriculum, students must demonstrate their ability to write and communicate accurately and with clarity in order to successfully complete their courses.

## Health Sciences General Track - Sample Plan of Study

| Freshman Year  |  |              |
|--|--|--------------|
| FALL   |  | CREDIT HOURS |
| <a href="#"><u>BIL 150</u></a><br>& <a href="#"><u>BIL 151</u></a>                                 | General Biology<br>and General Biology Laboratory  | 5            |
| <a href="#"><u>WRS 105</u></a>   | First-Year Writing I   | 3            |
| <a href="#"><u>MTH 107</u></a>   | Precalculus Mathematics I  | 3            |
| <a href="#"><u>UMX 100</u></a>   | The University of Miami Experience   | 0            |
| Elective   |  | 3            |
| Elective   |  | 3            |
| Credit Hours   |  | 17           |
| SPRING   |  |              |
| <a href="#"><u>BIL 160</u></a><br>& <a href="#"><u>BIL 161</u></a>                                 | Evolution and Biodiversity<br>and Evolution and Biodiversity Laboratory                            | 5            |
| <a href="#"><u>WRS 106</u></a> , <a href="#"><u>107</u></a> ,<br>or <a href="#"><u>ENG 106</u></a> | First-Year Writing II<br>or First-Year Writing II: STEM<br>or Writing About Literature and Culture | 3            |
| <a href="#"><u>MTH 108</u></a>   | Precalculus Mathematics II   | 3            |
| <a href="#"><u>PSY 110</u></a>   | Introduction to Psychology (counts for People & Society<br>cognate)                                | 3            |
| Elective   |  | 3            |
| Credit Hours   |  | 17           |
| Sophomore Year   |  |              |
| FALL   |  |              |
| <a href="#"><u>BIL 250</u></a>   | Genetics   | 3            |
| <a href="#"><u>CHM 121</u></a><br>& <a href="#"><u>CHM 113</u></a>                                 | Principles of Chemistry<br>and Chemistry Laboratory I  | 5            |
| <a href="#"><u>MTH 161</u></a>   | Calculus I   | 4            |
| <a href="#"><u>PSY 240</u></a>   | Psychopathology (counts for People & Society cognate)  | 3            |
| Credit Hours   |  | 15           |
| SPRING   |  |              |
| <a href="#"><u>BIL 255</u></a>   | Cellular and Molecular Biology   | 3            |
| <a href="#"><u>CHM 221</u></a><br>& <a href="#"><u>CHM 205</u></a>                                 | Introduction to Structure and Dynamics<br>and Chemical Dynamics Laboratory                         | 5            |
| <a href="#"><u>ENG 214</u></a>   | American Literature II (W; counts for Arts & Humanities<br>cognate)                                | 3            |
| <a href="#"><u>HCS 202</u></a>   | Introductory Statistics in Health Care   | 3            |

|  |   |            |
|--|---|------------|
| <b>Credit Hours</b>  |   | <b>14</b>  |
| <b>Junior Year</b>   |   |            |
| <b>FALL</b>  |   |            |
| <a href="#"><u>BPH 306</u></a>                                     | Principles of Nutrition   | 3          |
| <a href="#"><u>CHM 222</u></a><br>& <a href="#"><u>CHM 206</u></a> | Organic Reactions and Synthesis<br>and Organic Reactions and Synthesis Laboratory                       | 6          |
| <a href="#"><u>ENG 389</u></a>                                     | The Sixties: Literature, History, and Culture of the 1960s (W;<br>counts for Arts & Humanities cognate) | 3          |
| <a href="#"><u>PHY 101</u></a><br>& <a href="#"><u>PHY 106</u></a> | College Physics I<br>and College Physics Laboratory I   | 5          |
| <b>Credit Hours</b>  |   | <b>17</b>  |
| <b>SPRING</b>  |   |            |
| <a href="#"><u>PHY 102</u></a><br>& <a href="#"><u>PHY 108</u></a> | College Physics II<br>and College Physics Laboratory II   | 5          |
| <a href="#"><u>PSY 260</u></a>                                     | Personality Psychology (counts for People & Society cognate)  | 3          |
| Major Elective (*)   |   | 3          |
| Elective   |   | 3          |
| <b>Credit Hours</b>  |   | <b>14</b>  |
| <b>Senior Year</b>   |   |            |
| <b>FALL</b>  |   |            |
| <a href="#"><u>ENG 260</u></a>                                     | African-American Literature (W; counts for Arts & Humanities<br>cognate)                                | 3          |
| <a href="#"><u>HCS 212</u></a><br>& <a href="#"><u>HCS 213</u></a> | Human Anatomy<br>and Human Anatomy Laboratory   | 4          |
| Elective (W)   |   | 3          |
| Elective   |   | 3          |
| Elective   |   | 3          |
| <b>Credit Hours</b>  |   | <b>16</b>  |
| <b>SPRING</b>  |   |            |
| <a href="#"><u>PHI 115</u></a>                                     | Social and Ethical Issues in Computing  | 3          |
| <a href="#"><u>HCS 215</u></a>                                     | Principles of Systemic Physiology   | 3          |
| Elective (W)   |   | 3          |
| Elective   |   | 3          |
| <b>Credit Hours</b>  |   | <b>12</b>  |
| <b>Total Credit Hours</b>  |   | <b>122</b> |
| Plan of Study Grid   |   |            |

(W) = Course is designated as writing-intensive

(\*) = Students may fulfill this requirement by taking [BMB 401](#) or any BIL, BPH, or HCS course for at least 3 credits at the 200 level or above (except for [BPH 202](#), [HCS 202](#), and [NUR 202](#))



## General Track - Curriculum Requirements

| Code   | Title  | Credit Hours |
|--|--|--------------|
| <b>Areas of Proficiency</b>  |  |              |
| Written Communication Skills   |  |              |
| <a href="#">WRS 105</a>  | First-Year Writing I   | 3            |
| <a href="#">WRS 106</a><br>or <a href="#">WRS 107</a><br>or <a href="#">ENG 106</a>      | First-Year Writing II<br>First-Year Writing II: STEM<br>Writing About Literature and Culture | 3            |
| Quantitative Skills  |  |              |
| Calculus: <a href="#">MTH 141</a> , <a href="#">MTH 161</a> , or <a href="#">MTH 171</a> |  | 4            |
| <b>Areas of Knowledge</b>  |  |              |
| Arts & Humanities  |  | 9            |
| People & Society   |  | 9            |
| Science, Technology, Engineering, and Mathematics (STEM)*                                |  | 0            |
| <b>Computer Science</b>  |  |              |
| 1 CSC or BTE course  |  | 3            |
| <b>Statistics</b>  |  |              |
| <a href="#">HCS 202</a> or other approved statistics course                              |  | 3            |
| <b>Major</b>   |  |              |
| <a href="#">BIL 150</a><br>& <a href="#">BIL 151</a>                                     | General Biology<br>and General Biology Laboratory  | 5            |
| <a href="#">BIL 160</a><br>& <a href="#">BIL 161</a>                                     | Evolution and Biodiversity<br>and Evolution and Biodiversity Laboratory                      | 5            |
| <a href="#">BIL 250</a>  | Genetics   | 3            |
| <a href="#">BIL 255</a>  | Cellular and Molecular Biology   | 3            |
| <a href="#">BPH 306</a>  | Principles of Nutrition  | 3            |
| <a href="#">HCS 212</a><br>& <a href="#">HCS 213</a>                                     | Human Anatomy<br>and Human Anatomy Laboratory  | 4            |
| <a href="#">HCS 215</a>  | Principles of Systemic Physiology  | 3            |
| Major Elective**   |  | 3            |
| Choose one physics option below:   |  | 10-11        |
| College Physics:   |  |              |
| <a href="#">PHY 101</a><br>& <a href="#">PHY 106</a>                                     | College Physics I<br>and College Physics Laboratory I  |              |
| <a href="#">PHY 102</a><br>& <a href="#">PHY 108</a>                                     | College Physics II<br>and College Physics Laboratory II                                      |              |
| University Physics for the Life Sciences:  |  |              |

| Code  | Title   | Credit Hours |
|---|---|--------------|
| <a href="#">PHY 201</a><br>& <a href="#">PHY 106</a>  | University Physics I for the Sciences<br>and College Physics Laboratory I                     |              |
| <a href="#">PHY 202</a><br>& <a href="#">PHY 108</a>  | University Physics II for the Sciences<br>and College Physics Laboratory II                   |              |
| University Physics:                                   |   |              |
| <a href="#">PHY 221</a>                               | University Physics I  |              |
| <a href="#">PHY 222</a><br>& <a href="#">PHY 224</a>  | University Physics II<br>and University Physics II Lab  |              |
| <a href="#">PHY 223</a><br>& <a href="#">PHY 225</a>  | University Physics III<br>and University Physics III Lab                                      |              |
| Choose one chemistry option below:                    |   | 8-16         |
| Chemistry for Life Sciences:                          |   |              |
| <a href="#">CHM 103</a><br>& <a href="#">CHM 105</a>  | Chemistry for the Health Sciences I<br>and Chemistry for the Health Sciences I (Laboratory)   |              |
| <a href="#">CHM 104</a><br>& <a href="#">CHM 106</a>  | Chemistry for the Health Sciences II<br>and Chemistry for the Health Sciences II (Laboratory) |              |
| Chemistry for the Biosciences:***                     |   |              |
| <a href="#">CHM 121</a><br>& <a href="#">CHM 113</a>  | Principles of Chemistry<br>and Chemistry Laboratory I   |              |
| <a href="#">CHM 221</a><br>& <a href="#">CHM 205</a>  | Introduction to Structure and Dynamics<br>and Chemical Dynamics Laboratory                    |              |
| <a href="#">CHM 222</a><br>& <a href="#">CHM 206</a>  | Organic Reactions and Synthesis<br>and Organic Reactions and Synthesis Laboratory             |              |
| <b>Minor</b>  |   | <b>12-19</b> |
| <b>Advanced Writing and Communication Skills*****</b> |   |              |
| <b>Electives*****</b>                                 |   | <b>27-11</b> |
| <b>Total Credit Hours</b>                             |   | <b>120</b>   |
| Course List   |   |              |

\*The health science major may be used to fulfill this cognate area.

\*\*Students may fulfill this requirement by taking [BMB 401](#) or any BIL, BPH, or HCS course for at least 3 credits at the 200 level or above (except for [BPH 202](#), [HCS 202](#), and [NUR 202](#)).

\*\*\*[CHM 222](#) and [CHM 206](#) are recommended but not required for this track.

\*\*\*\*Students must take at least five designated writing-intensive courses to complete this requirement.

\*\*\*\*\*The number of electives students take may vary due to differences in placement scores, transfer credits, course and cognate selections, etc.

## Pre-Physical Therapy Track - Curriculum Requirements

| Code   | Title  | Credit Hours |
|--|--|--------------|
| <b>Areas of Proficiency</b>  |  |              |
| English Composition  |  |              |
| <a href="#">WRS 105</a>  | First-Year Writing I   | 3            |
| <a href="#">WRS 106</a>  | First-Year Writing II  | 3            |
| or <a href="#">WRS 107</a>   | First-Year Writing II: STEM  |              |
| or <a href="#">ENG 106</a>   | Writing About Literature and Culture   |              |
| Quantitative Skills  |  |              |
| Calculus: <a href="#">MTH 141</a> , <a href="#">MTH 161</a> , or <a href="#">MTH 171</a> |  | 4            |
| Computer Science: 1 CSC or BTE course  |  | 3            |
| Statistics: <a href="#">HCS 202</a> or other approved statistics course                  |  | 3            |
| <b>Areas of Knowledge</b>  |  |              |
| Arts & Humanities  |  | 9            |
| People & Society   |  | 9            |
| Science, Technology, Engineering, and Mathematics (STEM)*                                |  | 0            |
| <b>Major</b>   |  |              |
| <a href="#">BIL 150</a><br>& <a href="#">BIL 151</a>                                     | General Biology<br>and General Biology Laboratory  | 5            |
| <a href="#">BIL 160</a><br>& <a href="#">BIL 161</a>                                     | Evolution and Biodiversity<br>and Evolution and Biodiversity Laboratory                    | 5            |
| <a href="#">BIL 250</a>  | Genetics   | 3            |
| <a href="#">BIL 255</a>  | Cellular and Molecular Biology   | 3            |
| <a href="#">BPH 306</a>  | Principles of Nutrition  | 3            |
| <a href="#">HCS 212</a><br>& <a href="#">HCS 213</a>                                     | Human Anatomy<br>and Human Anatomy Laboratory  | 4            |
| <a href="#">HCS 215</a><br>& <a href="#">HCS 216</a>                                     | Principles of Systemic Physiology<br>and Principles of Systemic Physiology Laboratory (**) | 4            |
| <a href="#">PSY 230</a><br>or <a href="#">PSY 240</a>                                    | Child and Adolescent Development<br>Psychopathology  | 3            |
| Major Elective***  |  | 3            |
| Choose one physics option below:   |  | 10-11        |
| College Physics:   |  |              |
| <a href="#">PHY 101</a><br>& <a href="#">PHY 106</a>                                     | College Physics I<br>and College Physics Laboratory I                                      |              |
| <a href="#">PHY 102</a><br>& <a href="#">PHY 108</a>                                     | College Physics II<br>and College Physics Laboratory II                                    |              |

| Code  | Title   | Credit Hours |
|---|---|--------------|
| University Physics for the Life Sciences:             |   |              |
| <a href="#">PHY 201</a><br>& <a href="#">PHY 106</a>  | University Physics I for the Sciences<br>and College Physics Laboratory I                     |              |
| <a href="#">PHY 202</a><br>& <a href="#">PHY 108</a>  | University Physics II for the Sciences<br>and College Physics Laboratory II                   |              |
| University Physics:                                   |   |              |
| <a href="#">PHY 221</a>                               | University Physics I  |              |
| <a href="#">PHY 222</a><br>& <a href="#">PHY 224</a>  | University Physics II<br>and University Physics II Lab  |              |
| <a href="#">PHY 223</a><br>& <a href="#">PHY 225</a>  | University Physics III<br>and University Physics III Lab                                      |              |
| Choose one chemistry option below:                    |   | 8-16         |
| Chemistry for Life Sciences:                          |   |              |
| <a href="#">CHM 103</a><br>& <a href="#">CHM 105</a>  | Chemistry for the Health Sciences I<br>and Chemistry for the Health Sciences I (Laboratory)   |              |
| <a href="#">CHM 104</a><br>& <a href="#">CHM 106</a>  | Chemistry for the Health Sciences II<br>and Chemistry for the Health Sciences II (Laboratory) |              |
| Chemistry for the Biosciences:****                    |   |              |
| <a href="#">CHM 121</a><br>& <a href="#">CHM 113</a>  | Principles of Chemistry<br>and Chemistry Laboratory I   |              |
| <a href="#">CHM 221</a><br>& <a href="#">CHM 205</a>  | Introduction to Structure and Dynamics<br>and Chemical Dynamics Laboratory                    |              |
| <a href="#">CHM 222</a><br>& <a href="#">CHM 206</a>  | Organic Reactions and Synthesis<br>and Organic Reactions and Synthesis Laboratory             |              |
| <b>Minor</b>  |   | <b>12-19</b> |
| <b>Advanced Writing and Communication Skills*****</b> |   | <b>0</b>     |
| <b>Electives*****</b>                                 |   | <b>23-7</b>  |
| <b>Total Credit Hours</b>                             |   | <b>120</b>   |

\*The health science major may be used to fulfill this cognate area.

\*\*[HCS 216](#) is not required but it is highly recommended.

\*\*\*Students may fulfill this requirement by taking [BMB 401](#) or any BIL, BPH, or HCS course for at least 3 credits at the 200 level or above (except for [BPH 202](#), [HCS 202](#), and [NUR 202](#)).

\*\*\*\*[CHM 222](#) and [CHM 206](#) are recommended but not required for this track.

\*\*\*\*\*Students must take at least five designated writing-intensive courses to complete this requirement.

\*\*\*\*\* The number of electives students take may vary due to differences in placement scores, transfer credits, course and cognate selections, etc.

## Pre-Pharmacy Track - Curriculum Requirements

| Code   | Title  | Credit Hours |
|--|--|--------------|
| <b>Areas of Proficiency</b>  |  |              |
| Written Communication Skills   |  |              |
| <a href="#">WRS 105</a>  | First-Year Writing I   | 3            |
| <a href="#">WRS 106</a>  | First-Year Writing II  | 3            |
| or <a href="#">WRS 107</a>   | First-Year Writing II: STEM  |              |
| or <a href="#">ENG 106</a>   | Writing About Literature and Culture   |              |
| Mathematics & Computer Science   |  |              |
| Calculus: <a href="#">MTH 141</a> , <a href="#">MTH 161</a> , or <a href="#">MTH 171</a> |  | 4            |
| Computer Science: 1 CSC or BTE course  |  | 3            |
| Statistics: <a href="#">HCS 202</a> or other approved statistics course                  |  | 3            |
| <b>Areas of Knowledge</b>  |  |              |
| Arts & Humanities  |  | 9            |
| People & Society   |  | 9            |
| Science, Technology, Engineering, and Mathematics (STEM)*                                |  | 0            |
| <b>Major</b>   |  |              |
| <a href="#">BIL 150</a><br>& <a href="#">BIL 151</a>                                     | General Biology<br>and General Biology Laboratory  | 5            |
| <a href="#">BIL 160</a><br>& <a href="#">BIL 161</a>                                     | Evolution and Biodiversity<br>and Evolution and Biodiversity Laboratory                                    | 5            |
| <a href="#">BIL 250</a>  | Genetics   | 3            |
| <a href="#">BIL 255</a>  | Cellular and Molecular Biology   | 3            |
| <a href="#">BMB 401</a>  | Biochemistry for the Biomedical Sciences   | 4            |
| <a href="#">BPH 306</a>  | Principles of Nutrition  | 3            |
| <a href="#">COS 211</a>  | Public Speaking  | 3            |
| <a href="#">HCS 212</a><br>& <a href="#">HCS 213</a>                                     | Human Anatomy<br>and Human Anatomy Laboratory  | 4            |
| <a href="#">HCS 215</a><br>& <a href="#">HCS 216</a>                                     | Principles of Systemic Physiology<br>and Principles of Systemic Physiology Laboratory                      | 4            |
| <a href="#">ECO 211</a>  | Principles of Microeconomics   | 3            |
| <a href="#">ECO 212</a>  | Principles of Macroeconomics   | 3            |
| Major Elective**   |  | 3            |
| Microbiology:  |  | 5            |
| <a href="#">MIC 301</a><br>& <a href="#">MIC 304</a>                                     | Introduction to Microbes and the Immune System<br>and Introduction to Microbes and the Immune System (Lab) |              |
| Choose one physics option below:   |  | 10-11        |

| Code   | Title   | Credit Hours |
|--|---|--------------|
| College Physics:                                     |   |              |
| <a href="#">PHY 101</a><br>& <a href="#">PHY 106</a> | College Physics I<br>and College Physics Laboratory I                             |              |
| <a href="#">PHY 102</a><br>& <a href="#">PHY 108</a> | College Physics II<br>and College Physics Laboratory II                           |              |
| University Physics for the Life Sciences:            |   |              |
| <a href="#">PHY 201</a><br>& <a href="#">PHY 106</a> | University Physics I for the Sciences<br>and College Physics Laboratory I         |              |
| <a href="#">PHY 202</a><br>& <a href="#">PHY 108</a> | University Physics II for the Sciences<br>and College Physics Laboratory II       |              |
| University Physics:                                  |   |              |
| <a href="#">PHY 221</a>                              | University Physics I  |              |
| <a href="#">PHY 222</a><br>& <a href="#">PHY 224</a> | University Physics II<br>and University Physics II Lab                            |              |
| <a href="#">PHY 223</a><br>& <a href="#">PHY 225</a> | University Physics III<br>and University Physics III Lab                          |              |
| Chemistry for the Biosciences:                       |   | 16           |
| <a href="#">CHM 121</a><br>& <a href="#">CHM 113</a> | Principles of Chemistry<br>and Chemistry Laboratory I                             |              |
| <a href="#">CHM 221</a><br>& <a href="#">CHM 205</a> | Introduction to Structure and Dynamics<br>and Chemical Dynamics Laboratory        |              |
| <a href="#">CHM 222</a><br>& <a href="#">CHM 206</a> | Organic Reactions and Synthesis<br>and Organic Reactions and Synthesis Laboratory |              |
| <b>Minor</b>   |   | <b>0</b>     |
| <b>Advanced Writing and Communication Skills***</b>  |   | <b>0</b>     |
| <b>Electives****</b>                                 |   | <b>12-11</b> |
| <b>Total Credit Hours</b>                            |   | <b>120</b>   |

\*The health science major may be used to fulfill this cognate area.

\*\*Students may fulfill this requirement by taking any BIL, BPH, or HCS course for at least 3 credits at the 200 level or above (except for [BPH 202](#), [HCS 202](#), and [NUR 202](#)).

\*\*\*Students must take at least five designated writing-intensive courses to complete this requirement.

\*\*\*\*The number of electives students take may vary due to differences in placement scores, transfer credits, course and cognate selections, etc.

## Pre-Occupational Therapy Track - Curriculum Requirements

| Code   | Title   | Credit Hours |
|--|---|--------------|
| <b>Areas of Proficiency</b>  |   |              |
| English Composition  |   |              |
| <a href="#">WRS 105</a>  | First-Year Writing I  | 3            |
| <a href="#">WRS 106</a>  | First-Year Writing II   | 3            |
| or <a href="#">WRS 107</a>   | First-Year Writing II: STEM   |              |
| or <a href="#">ENG 106</a>   | Writing About Literature and Culture  |              |
| Mathematics & Computer Science   |   |              |
| Calculus: <a href="#">MTH 141</a> , <a href="#">MTH 161</a> , or <a href="#">MTH 171</a> |   | 4            |
| Computer Science: 1 CSC or BTE course  |   | 3            |
| Statistics: <a href="#">HCS 202</a> or other approved statistics course                  |   | 3            |
| <b>Areas of Knowledge</b>  |   |              |
| Arts & Humanities  |   | 9            |
| People & Society   |   | 9            |
| Science, Technology, Engineering, and Mathematics (STEM)*                                |   | 0            |
| <b>Major</b>   |   |              |
| <a href="#">BIL 150</a><br>& <a href="#">BIL 151</a>                                     | General Biology<br>and General Biology Laboratory                                     | 5            |
| <a href="#">BIL 160</a><br>& <a href="#">BIL 161</a>                                     | Evolution and Biodiversity<br>and Evolution and Biodiversity Laboratory               | 5            |
| <a href="#">BIL 250</a>  | Genetics  | 3            |
| <a href="#">BIL 255</a>  | Cellular and Molecular Biology  | 3            |
| <a href="#">BPH 206</a>  | Introduction to Public Health   | 3            |
| <a href="#">BPH 208</a>  | Introductory Epidemiology   | 3            |
| <a href="#">BPH 306</a>  | Principles of Nutrition   | 3            |
| <a href="#">BPH 317</a><br>or <a href="#">PSY 230</a>                                    | Theories in Growth and Development<br>Child and Adolescent Development                | 3            |
| <a href="#">PSY 110</a>  | Introduction to Psychology  | 3            |
| <a href="#">PSY 240</a>  | Psychopathology   | 3            |
| <a href="#">HCS 212</a><br>& <a href="#">HCS 213</a>                                     | Human Anatomy<br>and Human Anatomy Laboratory   | 4            |
| <a href="#">HCS 215</a><br>& <a href="#">HCS 216</a>                                     | Principles of Systemic Physiology<br>and Principles of Systemic Physiology Laboratory | 4            |
| <a href="#">KIN 230</a><br>or <a href="#">HCS 217</a>                                    | Medical Terminology and Documentation<br>Medical Terminology                          | 1            |
| Choose one physics option below:   |   | 10-11        |

| Code   | Title   | Credit Hours   |
|--|---|----------------|
| College Physics:   |   |                |
| <a href="#"><u>PHY 101</u></a><br>& <a href="#"><u>PHY 106</u></a> | College Physics I<br>and College Physics Laboratory I   |                |
| <a href="#"><u>PHY 102</u></a><br>& <a href="#"><u>PHY 108</u></a> | College Physics II<br>and College Physics Laboratory II                                       |                |
| University Physics for the Life Sciences:                          |   |                |
| <a href="#"><u>PHY 201</u></a><br>& <a href="#"><u>PHY 106</u></a> | University Physics I for the Sciences<br>and College Physics Laboratory I                     |                |
| <a href="#"><u>PHY 202</u></a><br>& <a href="#"><u>PHY 108</u></a> | University Physics II for the Sciences<br>and College Physics Laboratory II                   |                |
| University Physics:  |   |                |
| <a href="#"><u>PHY 221</u></a>                                     | University Physics I  |                |
| <a href="#"><u>PHY 222</u></a><br>& <a href="#"><u>PHY 224</u></a> | University Physics II<br>and University Physics II Lab  |                |
| <a href="#"><u>PHY 223</u></a><br>& <a href="#"><u>PHY 225</u></a> | University Physics III<br>and University Physics III Lab                                      |                |
| Choose one chemistry option below:                                 |   | 8-16           |
| Chemistry for Life Sciences:                                       |   |                |
| <a href="#"><u>CHM 103</u></a><br>& <a href="#"><u>CHM 105</u></a> | Chemistry for the Health Sciences I<br>and Chemistry for the Health Sciences I (Laboratory)   |                |
| <a href="#"><u>CHM 104</u></a><br>& <a href="#"><u>CHM 106</u></a> | Chemistry for the Health Sciences II<br>and Chemistry for the Health Sciences II (Laboratory) |                |
| Chemistry for the Biosciences:                                     |   |                |
| <a href="#"><u>CHM 121</u></a><br>& <a href="#"><u>CHM 113</u></a> | Principles of Chemistry<br>and Chemistry Laboratory I   |                |
| <a href="#"><u>CHM 221</u></a><br>& <a href="#"><u>CHM 205</u></a> | Introduction to Structure and Dynamics<br>and Chemical Dynamics Laboratory                    |                |
| <a href="#"><u>CHM 222</u></a><br>& <a href="#"><u>CHM 206</u></a> | Organic Reactions and Synthesis<br>and Organic Reactions and Synthesis Laboratory             |                |
| <b>Minor</b>   |   | <b>12-19</b>   |
| <b>Advanced Writing and Communication Skills***</b>                |   | <b>0</b>       |
| <b>Electives****</b>   |   | <b>13-0</b>    |
| <b>Total Credit Hours</b>  |   | <b>120-123</b> |
| Course List  |   |                |

\*The health science major may be used to fulfill this cognate area.

\*\*[CHM 222](#) and [CHM 206](#) are recommended but not required for this track.

\*\*\*Students must take at least five designated writing-intensive courses to complete this requirement.



\*\*\*\*The number of electives students take may vary due to differences in placement scores, transfer credits, course and cognate selections, etc.

## Pre-Medicine Track - Curriculum Requirements

| Code   | Title   | Credit Hours |
|--|---|--------------|
| <b>Areas of Proficiency</b>  |   |              |
| Written Communication Skills   |   |              |
| <a href="#">WRS 105</a>  | First-Year Writing I  | 3            |
| <a href="#">WRS 106</a>  | First-Year Writing II   | 3            |
| or <a href="#">WRS 107</a>   | First-Year Writing II: STEM   |              |
| or <a href="#">ENG 106</a>   | Writing About Literature and Culture                                    |              |
| Quantitative Skills  |   |              |
| Calculus: <a href="#">MTH 141</a> , <a href="#">MTH 161</a> , or <a href="#">MTH 171</a> |   | 4            |
| <b>Areas of Knowledge</b>  |   |              |
| Arts & Humanities  |   | 9            |
| People & Society   |   | 9            |
| Science, Technology, Engineering, and Mathematics (STEM)*                                |   | 0            |
| <b>Computer Science</b>  |   |              |
| 1 CSC or BTE course  |   | 3            |
| <b>Statistics</b>  |   |              |
| <a href="#">HCS 202</a> or other approved statistics course                              |   | 3            |
| <b>Major</b>   |   |              |
| <a href="#">BIL 150</a><br>& <a href="#">BIL 151</a>                                     | General Biology<br>and General Biology Laboratory                       | 5            |
| <a href="#">BIL 160</a><br>& <a href="#">BIL 161</a>                                     | Evolution and Biodiversity<br>and Evolution and Biodiversity Laboratory | 5            |
| <a href="#">BIL 250</a>  | Genetics  | 3            |
| <a href="#">BIL 255</a>  | Cellular and Molecular Biology  | 3            |
| <a href="#">BMB 401</a>  | Biochemistry for the Biomedical Sciences                                | 4            |
| <a href="#">BPH 206</a>  | Introduction to Public Health   | 3            |
| <a href="#">BPH 208</a>  | Introductory Epidemiology   | 3            |
| <a href="#">BPH 306</a>  | Principles of Nutrition   | 3            |
| <a href="#">HCS 212</a><br>& <a href="#">HCS 213</a>                                     | Human Anatomy<br>and Human Anatomy Laboratory                           | 4            |
| <a href="#">HCS 215</a>  | Principles of Systemic Physiology                                       | 3            |
| Complete 6 graded credits of ENG/WRS coursework**  |   | 0            |
| Choose one physics option below:   |   | 10-11        |
| College Physics:   |   |              |
| <a href="#">PHY 101</a>  | College Physics I   |              |

| Code   | Title   | Credit Hours |
|--|---|--------------|
| & <a href="#">PHY 106</a>                            | and College Physics Laboratory I  |              |
| <a href="#">PHY 102</a><br>& <a href="#">PHY 108</a> | College Physics II<br>and College Physics Laboratory II                           |              |
| University Physics for the Life Sciences:            |   |              |
| <a href="#">PHY 201</a><br>& <a href="#">PHY 106</a> | University Physics I for the Sciences<br>and College Physics Laboratory I         |              |
| <a href="#">PHY 202</a><br>& <a href="#">PHY 108</a> | University Physics II for the Sciences<br>and College Physics Laboratory II       |              |
| University Physics:                                  |   |              |
| <a href="#">PHY 221</a>                              | University Physics I  |              |
| <a href="#">PHY 222</a><br>& <a href="#">PHY 224</a> | University Physics II<br>and University Physics II Lab                            |              |
| <a href="#">PHY 223</a><br>& <a href="#">PHY 225</a> | University Physics III<br>and University Physics III Lab                          |              |
| Chemistry for the Biosciences:                       |   | 16           |
| <a href="#">CHM 121</a><br>& <a href="#">CHM 113</a> | Principles of Chemistry<br>and Chemistry Laboratory I                             |              |
| <a href="#">CHM 221</a><br>& <a href="#">CHM 205</a> | Introduction to Structure and Dynamics<br>and Chemical Dynamics Laboratory        |              |
| <a href="#">CHM 222</a><br>& <a href="#">CHM 206</a> | Organic Reactions and Synthesis<br>and Organic Reactions and Synthesis Laboratory |              |
| <b>Minor</b>   |   | <b>0</b>     |
| <b>Advanced Writing and Communication Skills***</b>  |   | <b>0</b>     |
| <b>Electives****</b>                                 |   | <b>25-24</b> |
| <b>Total Credit Hours</b>                            |   | <b>121</b>   |
| Course List  |   |              |

\*The health science major may be used to fulfill this cognate area.

\*\*Six graded credits of WRS/ENG courses (6 credits). Creative writing courses cannot count. [WRS 105](#) and [WRS 106/WRS 107/ENG 106](#) may count if a grade was received.

\*\*\*Students must take at least five designated writing-intensive courses to complete this requirement.

\*\*\*\*The number of electives students take may vary due to differences in placement scores, transfer credits, course and cognate selections, etc.

## Health Management & Policy Track - Curriculum Requirements

| Code   | Title   | Credit Hours |
|--|---|--------------|
| <b>Areas of Proficiency</b>  |   |              |
| Written Communication Skills   |   |              |
| <a href="#">WRS 105</a>  | First-Year Writing I  | 3            |
| <a href="#">WRS 106</a>  | First-Year Writing II   | 3            |
| or <a href="#">WRS 107</a>   | First-Year Writing II: STEM   |              |
| or <a href="#">ENG 106</a>   | Writing About Literature and Culture  |              |
| Quantitative Skills  |   |              |
| Calculus: <a href="#">MTH 141</a> , <a href="#">MTH 161</a> , or <a href="#">MTH 171</a> |   | 4            |
| <b>Areas of Knowledge</b>  |   |              |
| Arts & Humanities  |   | 9            |
| People & Society   |   | 9            |
| Science, Technology, Engineering, and Mathematics (STEM)*                                |   | 0            |
| <b>Computer Science</b>  |   |              |
| 1 CSC or BTE course  |   | 3            |
| <b>Statistics</b>  |   |              |
| <a href="#">HCS 202</a>  | Introductory Statistics in Health Care (or other approved statistics course)          | 3            |
| <b>Major</b>   |   |              |
| <a href="#">BIL 150</a><br>& <a href="#">BIL 151</a>                                     | General Biology<br>and General Biology Laboratory                                     | 5            |
| <a href="#">BIL 160</a><br>& <a href="#">BIL 161</a>                                     | Evolution and Biodiversity<br>and Evolution and Biodiversity Laboratory               | 5            |
| <a href="#">BIL 250</a>  | Genetics  | 3            |
| <a href="#">BIL 255</a>  | Cellular and Molecular Biology  | 3            |
| <a href="#">BPH 306</a>  | Principles of Nutrition   | 3            |
| <a href="#">HCS 212</a><br>& <a href="#">HCS 213</a>                                     | Human Anatomy<br>and Human Anatomy Laboratory   | 4            |
| <a href="#">HCS 215</a>  | Principles of Systemic Physiology   | 3            |
| <a href="#">HMP 270</a>  | Introduction to Health Management and Policy  | 3            |
| <a href="#">HMP 320</a><br>or <a href="#">HMP 350</a>                                    | Health Care Demand and Supply<br>Production and Consumption of Health and Health Care | 3            |
| <a href="#">HMP 460</a>  | Health Care Law and Ethics  | 3            |
| HMP Elective**   |   | 3            |
| Major Elective***  |   | 3            |
| Major Elective***  |   | 3            |

| Code   | Title   | Credit Hours |
|--|---|--------------|
| Major Elective***                                    |   | 3            |
| Major Elective***                                    |   | 3            |
| Choose one physics option below:                     |   | 10-11        |
| College Physics:                                     |   |              |
| <a href="#">PHY 101</a><br>& <a href="#">PHY 106</a> | College Physics I<br>and College Physics Laboratory I   |              |
| <a href="#">PHY 102</a><br>& <a href="#">PHY 108</a> | College Physics II<br>and College Physics Laboratory II                                       |              |
| University Physics for the Life Sciences:            |   |              |
| <a href="#">PHY 201</a><br>& <a href="#">PHY 106</a> | University Physics I for the Sciences<br>and College Physics Laboratory I                     |              |
| <a href="#">PHY 202</a><br>& <a href="#">PHY 108</a> | University Physics II for the Sciences<br>and College Physics Laboratory II                   |              |
| University Physics:                                  |   |              |
| <a href="#">PHY 221</a>                              | University Physics I  |              |
| <a href="#">PHY 222</a><br>& <a href="#">PHY 224</a> | University Physics II<br>and University Physics II Lab  |              |
| <a href="#">PHY 223</a><br>& <a href="#">PHY 225</a> | University Physics III<br>and University Physics III Lab                                      |              |
| Choose one chemistry option below:                   |   | 8-16         |
| Chemistry for Life Sciences:                         |   |              |
| <a href="#">CHM 103</a><br>& <a href="#">CHM 105</a> | Chemistry for the Health Sciences I<br>and Chemistry for the Health Sciences I (Laboratory)   |              |
| <a href="#">CHM 104</a><br>& <a href="#">CHM 106</a> | Chemistry for the Health Sciences II<br>and Chemistry for the Health Sciences II (Laboratory) |              |
| Chemistry for the Biosciences:****                   |   |              |
| <a href="#">CHM 121</a><br>& <a href="#">CHM 113</a> | Principles of Chemistry<br>and Chemistry Laboratory I   |              |
| <a href="#">CHM 221</a><br>& <a href="#">CHM 205</a> | Introduction to Structure and Dynamics<br>and Chemical Dynamics Laboratory                    |              |
| <a href="#">CHM 222</a><br>& <a href="#">CHM 206</a> | Organic Reactions and Synthesis<br>and Organic Reactions and Synthesis Laboratory             |              |
| Minor*****   |   | 0            |
| Advanced Writing and Communication Skills*****       |   | 0            |
| Electives*****                                       |   | 18-9         |
| Total Credit Hours                                   |   | 120          |
| Course List  |   |              |

\*The health science major may be used to fulfill this cognate area.

\*\*Students may fulfill this requirement by taking

[HMP 310](#), [HMP 388](#), [HMP 498](#), [HMP 499](#), [INS 570](#), [INS 571](#), [INS 572](#), [INS 573](#), [SOC 321](#)

\*\*\*Students may fulfill this requirement by taking [BMB 401](#), or any or any BIL, BPH, or HCS course for at least 3 credits at the 200 level or above (except for [BPH 202](#), [HCS 202](#), and [NUR 202](#)).

\*\*\*\*[CHM 222](#) and [CHM 206](#) are recommended but not required for this track.

\*\*\*\*\*Students who complete the Health Management and Policy Track automatically complete a minor in Health Management and Policy; no additional coursework is required to complete this requirement.

\*\*\*\*\*Students must take at least five designated writing-intensive courses to complete this requirement.

\*\*\*\*\*The number of electives students take may vary due to differences in placement scores, transfer credits, course and cognate selections, etc.

# **APPENDIX B**

## **Bachelor of Science in Public Health Program of Study**

## **PUBLIC HEALTH**

The University of Miami School of Nursing and Health Studies offers courses leading to the degree of Bachelor of Science in Public Health. Baccalaureate education provides the foundation for further education in Public Health and/or other specialized health professional fields.

## **ACADEMIC POLICIES**

### **REQUIREMENTS FOR ADMITTED STUDENTS:**

The course work for the BSPH Program is based on recommendations made by the Association for Prevention Teaching and Research (2008) for undergraduate course work in Public Health. Students are required to complete 33 credits of Public Health coursework, including 30 credits of core required courses and 3 credits of approved Public Health electives.

#### **Requirements to Declare**

Current UM students who wish to switch into the BSPH program must possess a minimum 3.0 UM GPA to be considered.

Incoming transfer students who plan to enter the BSPH program must possess a minimum 2.8 transfer GPA to be considered for admission.

#### **Requirements to Continue**

BSPH are strongly encouraged not to continue with the BSPH degree if they have less than a 2.5 UM GPA after 15 credits completed in the major.

#### **Requirements to Graduate**

Students enrolled in the BSPH program must complete their coursework with a minimum 2.0 UM GPA and a minimum 2.0 major GPA to graduate.

## **ACADEMIC PROGRAMS**

The School of Nursing and Health Studies will award a Bachelor of Science in Public Health, once a student has completed the requirements listed below.

The Public Health Program offers curricula that are designed to prepare students for public health practice or graduate education in health related fields. Programs of study can be tailored for students wishing to combine Public Health education with a variety of other health related fields (e.g., pre-med, pre-physical therapy).

No minor is required within the Public Health program. However, students have room within their plan of study to pursue a minor if desired.



## Areas of Proficiency

The Areas of Proficiency requirements ensure that students either already possess, or develop at the University, the ability to express themselves effectively, to use quantitative skills with facility, and to reason cogently.

### Written Communication Skills

Effective writing skills advance ideas efficiently and persuasively, so the expectation is that students become adept at using writing as an effective communication tool.

#### Requirements

Students fulfill this requirement by completing [WRS 105](#) and [WRS 106/WRS 107/ENG 106](#) (Note: SAT or ACT verbal scores can be used to waive the [WRS 105](#) requirement; credit will not be awarded for the waiver. Students who enter UM with credits for [WRS 105](#) or [WRS 106/WRS 107/ENG 106](#) may take [WRS 208](#) to finish this requirement).

#### Outcomes

By completing the Written Communication Skills requirement, students will be able to:

1. Demonstrate effective written communication skills in relation to specific rhetorical tasks.
2. Construct original, well-reasoned arguments using a range of materials.
3. Integrate and synthesize appropriate and relevant primary and secondary sources in their writing.

### Quantitative Skills

In a world increasingly influenced by science and technology, it is important for students to acquire the capacity to understand and use essential quantitative skills. The Quantitative Skills Proficiency Requirement helps students learn to use quantitative skills and tools to solve problems, including the interpretation, manipulation, and application of quantitative data.

#### Requirements

Students fulfill this requirement by completing the following approved statistics course:

1. Statistics: [BPH 202](#)

Students may be able to fulfill Quantitative Skills Proficiency Requirement through credit earned through the following tests: AP, IB, A-Level, and Cambridge Pre-U. Please [click here](#) to see how credit/exemption may be earned through these tests.

#### Outcomes

By completing the Quantitative Skills requirement, students will be able to:

1. Select and use appropriate quantitative methods and tools to solve problems; and

2. Interpret, manipulate, and apply quantitative data to solve problems

## **Mathematics**

### **Requirements**

Students complete this requirement by completing [MTH 107](#) or higher.

## **Social Science**

### **Requirements**

Students complete this requirement by completing [PSY 110](#) and an additional approved social science course for a total of 6 credits.

## **Modern Language**

### **Requirements**

Students complete this requirement by completing one 3 credit Modern Language course at or above the 200 level.

## **Natural Science**

### **Requirements**

Students complete this requirement by completing [BIL 150](#) and [BIL 151](#), as well as [CHM 103](#) and [CHM 105](#) or [CHM 121](#) and [CHM 113](#) for a total of 9-10 credits.

## **Areas of Knowledge (Cognates)**

The Areas of Knowledge requirement is intended to help students understand and appreciate intellectual achievements in major areas of human inquiry and creative endeavor. Students can satisfy this requirement through the majors, minors, or cognates.

In the Cognates Program, students examine creative expression in the arts, literature, and philosophy; study human development and behavior; and explore the mathematical, scientific, and technological world. Students fulfill an Area of Knowledge requirement by completing a cognate in one of the three areas of the university curriculum: Arts & Humanities (A&H); People & Society (P&S); and Science, Technology, Engineering & Mathematics (STEM). A cognate normally requires nine credits of coursework, and can be either a thematic or an individualized cognate. Thematic cognates consist of courses grouped by theme, while individualized cognates consist of courses that have the same area of knowledge designation. Completed cognates are listed on the students' transcripts.

As an alternative to using a cognate to fulfill an Area of Knowledge requirement, a major or minor may be used to fulfill the Area of Knowledge requirement. Approved thematic cognates can be found using the [cognate search engine](#) which allows students to search for thematic cognates based on cognate features, courses, and keywords. Each thematic cognate is administered by a department or program designated as the "Responsible Academic Unit" (RAU). Inquiries about a thematic cognate should be directed to the cognate's RAU. Several cognates may include the same courses; however, one course cannot be used to complete

multiple cognates. For more information on cognates, go to the "General Education Requirements" section of the Academic Bulletin or visit <http://www.miami.edu/cognates/>.

## **Arts & Humanities**

Arts & Humanities cognates engage students in the study of the most enduring and influential works of art, imagination, and culture. Through study, creation, and performance, courses in this area enable students to understand the works of artists, musicians, novelists, philosophers, playwrights, poets, historians, and theologians. These courses cultivate the ability to interpret, critically evaluate, and experience the creative products of human culture and expression.

### **Requirements**

Complete one Arts & Humanities cognate.

### **Outcomes**

By completing the Arts & Humanities requirement, students will be able to:

1. Critically evaluate and interpret the creative products of humanistic and artistic expression, applying appropriate vocabulary and concepts for their description and analysis
2. Understand the creation and performance of art

## **People & Society**

People & Society cognates help students understand and analyze the organization of society and the patterns of social change, in the past and in the contemporary world.

### **Requirements**

Complete one People & Society cognate. The public health major may be used to fulfill this cognate area.

### **Outcomes**

By completing the People & Society requirement, students will be able to:

1. Analyze the organization of society
2. Analyze patterns of social change

## **Science, Technology, Engineering, and Mathematics (STEM)**

STEM cognates develop students' abilities to think critically about mathematical, scientific, and technological issues by understanding the processes and methods of scientific inquiry involved in experimentation, observation, and quantitative analysis. The STEM cognates nurture literacies that enable students to make informed decisions in an increasingly complex world.

### **Requirements**

Complete one STEM cognate.

## Outcomes

By completing the STEM requirement, students will be able to:

1. Understand the use of quantitative tools, experimentation, and observation to analyze and solve mathematical, scientific, environmental, and technological problems
2. Interpret quantitative data and draw useful conclusions

## Individualized Cognates

Students may create an individualized cognate to fulfill an Area of Knowledge requirement. All of the courses used in an individualized cognate must have the Area of Knowledge attribute in CaneLink for the requirement that they are being used to fulfill, even if they are transfer credits. If a course has been approved to be utilized in an individualized cognate, an Area of Knowledge attribute will be listed in CaneLink. No exceptions will be accepted. A searchable list of courses eligible to be used in individualized cognates is available [here](#).

Individualized cognates use the following academic plan codes: AT\_0080 (Arts & Humanities), PS\_0070 (People & Society), and ST\_0026 (STEM).

## Major

Refer to the "Major Requirements" section below for information on the courses required for the BSPH program.

## Minor

BSPH students are not required to complete a minor.

## Advanced Writing and Communication Skills

The Advanced Writing and Communication Skills requirement empowers public health students to develop their communication skills, both written and verbal, enabling them to better articulate information relating to health science, nursing, and public health.

### Requirements

To fulfill this requirement, students must complete five designated writing-intensive courses. Several public health requirements and/or electives may qualify as writing-intensive.

## Public health Courses that Require Formal Student Writing or Presentation

The following courses carry writing and presentation components and may count for the BSPH program:

| Course                  | Writing Assignment  | Student Presentations      |
|-------------------------|---|----------------------------|
| <a href="#">BPH 301</a> | Two reflective papers, Pop culture analysis paper, Sex research paper, 4 written homework assignments | Research presentation      |
| <a href="#">BPH 309</a> | Three reflective papers   | Final student presentation |

| <b>Course</b>           | <b>Writing Assignment</b>  | <b>Student Presentations</b>                       |
|-------------------------|--|--|
| <a href="#">BPH 310</a> | Seven P&P assignments, Literature review proposal, Literature review synthesis paper           | P&P final presentation, Data visualization         |
| <a href="#">BPH 321</a> | Two reflective papers, Literature review matrix, Public health logic model, Intervention paper | Public health intervention presentation            |
| <a href="#">BPH 322</a> | Policy Analysis Paper  | HiAP Presentation                                  |
| <a href="#">BPH 419</a> | Two reflective papers, Two service-learning journals   | One poster presentation, One research presentation |
| <a href="#">BPH 490</a> | Two reflective papers, Final written project   | Poster presentation                                |

## Outcomes

By completing the Advanced Writing and Communication Skills requirement, students will be able to:

1. effectively communicate information related to public health in both speech and in writing, using appropriate information sources, presentation formats, and technologies
2. demonstrate the necessary written and verbal communication skills to effectively carry out a career in healthcare

## Plan for assessment

### Student Performance on Written Assignments and Presentations

In order to graduate from the BSPH program students must successfully pass two courses in Written Communication Skills (i.e., [WRS 105](#) and [WRS 106/WRS 107/ENG 106](#)) as well as five writing-intensive courses with a grade greater than or equal to 70%. The majority of public health courses include written assignments and student presentations as part of the course grade. Grading of student written assignments and oral presentations are based on defined rubrics. These courses may be applied to the BSPH program as outlined in the major requirements.

## Electives

Students must earn a minimum of 120 credits to complete the BSPH degree. Students may need to take varying numbers of elective credits beyond the degree requirements listed above to reach the 120 credit threshold.

## Major Requirements

Public health can be a primary major or an additional major.

Coursework in the BSPH program is based on recommendations made by the Association for Prevention Teaching and Research (2008) for undergraduate course work in public health. Students are required to complete 33 credit hours of public health coursework, which includes 30 credit hours of core required courses and 3 credit hours of approved public health

electives.

Visit the "MAJORS" link to learn more about the major requirements for the SONHS' BSPH program, which are listed under the "OVERVIEW" section for the public health major.

## Second Major Requirements

A second major in public health is available to all UM students. Students who pursue a second major in public health must complete the following courses:

| Code                    | Title  | Credit Hours |
|-------------------------|--|--------------|
| <a href="#">BPH 206</a> | Introduction to Public Health                | 3            |
| <a href="#">BPH 208</a> | Introductory Epidemiology                    | 3            |
| <a href="#">BPH 305</a> | Issues in Health Disparities                 | 3            |
| <a href="#">BPH 309</a> | Health and Environment                       | 3            |
| <a href="#">BPH 310</a> | Global Health                                | 3            |
| <a href="#">BPH 321</a> | Health Promotion and Disease Prevention      | 3            |
| <a href="#">BPH 322</a> | Introduction to Health Policy                | 3            |
| <a href="#">BPH 352</a> | Biological Principles of Public Health       | 3            |
| <a href="#">BPH 465</a> | Public Health Statistics and Data Management | 3            |
| <a href="#">BPH 490</a> | Field Practicum in Community Health          | 4            |
| Elective (*)            |  | 3            |
| Total Credit Hours      |  | 34           |
| Course List             |  |              |

(\*) = Students may choose an elective from the following courses: [APY 205](#), [BPH 301](#), [BPH 303](#), [BPH 306](#), [BPH 317](#), [BPH 319](#), [BPH 355](#), [BPH 365](#), [BPH 402](#), [BPH 419](#), [BPH 461](#), [BPH 487](#), [BTE 450](#), [HMP 460](#), [COS 324](#), [COS 325](#), [COS 426](#), [COS 427](#), [COS 472](#), [GEG 231](#), [GEG 241](#), [GEG 334](#), [GEG 336](#), [GEG 341](#), [GEG 343](#), [GEG 345](#), [GEG 346](#), [GEG 348](#), [GEG 366](#), [GEG 412](#), [INS 570](#), [INS 571](#), [INS 572](#), [INS 573](#), [INS 599](#), [KIN 155](#), [HMP 270](#), [MKT 388](#), and [SOC 480](#)

## Minor Requirements

The SONHS offers a minor in public health. The School also collaborated with the School of Communication to offer a minor health communication.

Visit the "MINORS" link to learn more about the minor requirements for the public health and health communication minors.

## Classes Not Applicable Toward SONHS Degrees

The following courses do not count toward the 120 credits required of the BSPH degree: DAN 101-104, [WRS 103](#), and [MTH 099](#). Based on their ENG or MTH placement scores, students may need to complete ENG 103 or [MTH 099](#) before enrolling in higher-level requirements. Even though the courses listed above cannot count toward graduation, they can

count toward the 12 credits required to be considered a full-time student.

### **Senior Assessments**

In line with the SONHS' ongoing accreditation efforts, seniors with a major in the health science, nursing, and public health may be required to participate in general or major-specific senior assessments lasting up to several hours each. Scores on senior assessments will not affect students' GPAs or ability to graduate, but failure to complete required assessments may delay or prevent students' ability to graduate.

### **Residency Requirements**

Undergraduate BSPH students must adhere to the general UM residency rules. At least half of the public health major and at least half of the public health minor must be taken in residence at the UM. Exceptions to the residency requirements may only be obtained through an appeal to the Undergraduate Academic Standing and Admissions Committee (UGASAC). Students should speak with an academic advisor in the [OSS](#) for more information on the residency requirements and on the UGASAC appeals process.

Public health majors must complete at least 18 of the 34 credits required for the public health major in residence at the University of Miami School of Nursing and Health Studies. Public health majors can apply a maximum of 6 credits from study abroad programs toward their public health major. These study abroad credits will count as part of the remaining 15 of the 34 credits required of the major that are allowed to be taken outside of the University of Miami School of Nursing and Health Studies.





## B.S. in Public Health - Curriculum Requirements

| Code   | Title   | Credit Hours |
|--|---|--------------|
| <b>General Education - Areas of Proficiency</b>          |   |              |
| Written Communication Skills                             |   |              |
| <a href="#">WRS 105</a>                                  | First-Year Writing I  | 3            |
| <a href="#">WRS 106</a><br>or <a href="#">ENG 106</a>    | First-Year Writing II<br>Writing About Literature and Culture                               | 3            |
| Quantitative Skills                                      |   |              |
| <a href="#">BPH 202</a>                                  | Introductory Statistics in Health Care  | 3            |
| <b>General Education - Areas of Knowledge</b>            |   |              |
| Arts & Humanities  |   | 9            |
| People & Society*  |   | 0            |
| Science, Technology, Engineering, and Mathematics (STEM) |   | 9            |
| <b>Degree Requirements</b>                               |   |              |
| Mathematics  |   |              |
| <a href="#">MTH 107</a> or higher                        |   | 3            |
| Social Science   |   |              |
| <a href="#">PSY 110</a>                                  | Introduction to Psychology  | 3            |
| One additional approved social science elective          |   | 3            |
| Modern Language  |   |              |
| One modern language course at or above the 200 level     |   | 3            |
| Natural Science  |   |              |
| <a href="#">BIL 150</a><br>& <a href="#">BIL 151</a>     | General Biology<br>and General Biology Laboratory   | 5            |
| Choose one chemistry option below:                       |   | 4-5          |
| <a href="#">CHM 103</a><br>& <a href="#">CHM 105</a>     | Chemistry for the Health Sciences I<br>and Chemistry for the Health Sciences I (Laboratory) |              |
| <a href="#">CHM 121</a><br>& <a href="#">CHM 113</a>     | Principles of Chemistry<br>and Chemistry Laboratory I                                       |              |
| <b>Major**</b>   |   |              |
| <a href="#">BPH 206</a>                                  | Introduction to Public Health   | 3            |
| <a href="#">BPH 208</a>                                  | Introductory Epidemiology   | 3            |
| <a href="#">BPH 305</a>                                  | Issues in Health Disparities  | 3            |
| <a href="#">BPH 309</a>                                  | Health and Environment  | 3            |
| <a href="#">BPH 310</a>                                  | Global Health   | 3            |

| Code   | Title  | Credit Hours |
|--|--|--------------|
| <a href="#">BPH 321</a>                              | Health Promotion and Disease Prevention      | 3            |
| <a href="#">BPH 322</a>                              | Introduction to Health Policy                | 3            |
| <a href="#">BPH 352</a>                              | Biological Principles of Public Health       | 3            |
| <a href="#">BPH 465</a>                              | Public Health Statistics and Data Management | 3            |
| <a href="#">BPH 490</a>                              | Field Practicum in Community Health          | 4            |
| Major Elective***                                    |  | 3            |
| <b>Advanced Writing and Communication Skills****</b> |  | <b>0</b>     |
| <b>Electives*****</b>                                |  | <b>39-38</b> |
| <b>Total Credit Hours</b>                            |  | <b>121</b>   |
| Course List  |  |              |

\*The public health major may be used to fulfill this cognate area.

\*\*Students must complete at least 18 of the 33 credits required of the major in residence at the University of Miami School of Nursing and Health Studies.

\*\*\*Students may choose an elective from the following

courses: [APY 205](#), [BPH 301](#), [BPH 303](#), [BPH 306](#), [BPH 317](#), [BPH 319](#), [BPH 355](#), [BPH 365](#), [BPH 402](#), [BPH 419](#), [BPH 461](#), [BPH 487](#), [BTE 450](#), [HMP 460](#), [COS 324](#), [COS 325](#), [COS 426](#), [COS 427](#), [COS 472](#), [GEG 231](#), [GEG 241](#), [GEG 334](#), [GEG 336](#), [GEG 341](#), [GEG 343](#), [GEG 345](#), [GEG 346](#), [GEG 348](#), [GEG 366](#), [GEG 412](#), [INS 570](#), [INS 571](#), [INS 572](#), [INS 573](#), [INS 599](#), [KIN 155](#), [HMP 270](#), [MKT 388](#), and [SOC 480](#)

\*\*\*\*The Advanced Writing and Communication Skills requirement empowers students to develop their communication skills, both written and verbal, enabling them to better articulate information relating to public health. Several designated writing-intensive courses are built into the public health major to satisfy this requirement. Students must earn a grade of C- or higher in each course.

\*\*\*\*\*The number of electives students take may vary due to differences in placement scores, transfer credits, course and cognate selections, etc.

## B.S. in Public Health - Sample Plan of Study

The sample plan of study listed below is based on the following ENG, MTH, and modern language placement information and major, minor, and cognate selections:

- ENG placement: WRS 105
- MTH placement: MTH 101
- Modern Language placement: SPA 101
- Major(s): Public Health
- Minor(s): None
- Cognates
  - Art & Humanities: Popular Culture (RAU = English)
  - People & Society: Public Health major (RAU = Nursing & Health Studies)
  - Science, Technology, Engineering, and Mathematics (STEM): Biology and Chemistry for Pre-Health Sciences (RAU = Chemistry)

### Sample Plan of Study

| Freshman Year  |   |              |
|--|---|--------------|
| FALL   |   | CREDIT HOURS |
| <a href="#"><u>BPH 206</u></a>                                     | Introduction to Public Health (W)   | 3            |
| <a href="#"><u>WRS 105</u></a>                                     | First-Year Writing I  | 3            |
| <a href="#"><u>MTH 101</u></a>                                     | Algebra for College Students  | 3            |
| <a href="#"><u>PSY 110</u></a>                                     | Introduction to Psychology  | 3            |
| <a href="#"><u>SPA 101</u></a>                                     | Elementary Spanish I  | 3            |
| <b>Credit Hours</b>  |   | <b>15</b>    |
| SPRING   |   |              |
| <a href="#"><u>BPH 208</u></a>                                     | Introductory Epidemiology   | 3            |
| <a href="#"><u>WRS 106</u></a> or <a href="#"><u>ENG 106</u></a>   | First-Year Writing II<br>or Writing About Literature and Culture            | 3            |
| <a href="#"><u>MTH 107</u></a>                                     | Precalculus Mathematics I   | 3            |
| <a href="#"><u>SPA 102</u></a>                                     | Elementary Spanish II   | 3            |
| Elective   |   | 3            |
| <b>Credit Hours</b>  |   | <b>15</b>    |
| Sophomore Year   |   |              |
| FALL   |   |              |
| <a href="#"><u>BPH 310</u></a>                                     | Global Health   | 3            |
| <a href="#"><u>BIL 150</u></a><br>& <a href="#"><u>BIL 151</u></a> | General Biology<br>and General Biology Laboratory (counts for STEM cognate) | 5            |

|  |  |           |
|--|--|-----------|
| <a href="#"><u>BPH 202</u></a>                                     | Introductory Statistics in Health Care (W)                                       | 3         |
| <a href="#"><u>SPA 201</u></a>                                     | Intermediate Spanish I   | 3         |
| Major Elective (*)   |  | 3         |
| <b>Credit Hours</b>  |  | <b>17</b> |
| <b>SPRING</b>  |  |           |
| <a href="#"><u>CHM 121</u></a><br>& <a href="#"><u>CHM 113</u></a> | Principles of Chemistry<br>and Chemistry Laboratory I (counts for STEM cognate)  | 5         |
| <a href="#"><u>ENG 383</u></a>                                     | The Literature of Science Fiction (W; counts for Arts & Humanities<br>cognate)   | 3         |
| <a href="#"><u>PSY 240</u></a>                                     | Psychopathology  | 3         |
| Elective   |  | 3         |
| <b>Credit Hours</b>  |  | <b>14</b> |
| <b>Junior Year</b>   |  |           |
| <b>FALL</b>  |  |           |
| <a href="#"><u>AMS 322</u></a>                                     | Topics in American Studies: Literature (counts for Arts &<br>Humanities cognate) | 3         |
| <a href="#"><u>BPH 321</u></a>                                     | Health Promotion and Disease Prevention (W)                                      | 3         |
| <a href="#"><u>BPH 352</u></a>                                     | Biological Principles of Public Health   | 3         |
| Elective   |  | 3         |
| Elective   |  | 3         |
| <b>Credit Hours</b>  |  | <b>15</b> |
| <b>SPRING</b>  |  |           |
| <a href="#"><u>BPH 309</u></a>                                     | Health and Environment (W)   | 3         |
| <a href="#"><u>BPH 322</u></a>                                     | Introduction to Health Policy  | 3         |
| Elective   |  | 3         |
| Elective   |  | 3         |
| Elective   |  | 3         |
| <b>Credit Hours</b>  |  | <b>15</b> |
| <b>Senior Year</b>   |  |           |
| <b>FALL</b>  |  |           |
| <a href="#"><u>BPH 465</u></a>                                     | Public Health Statistics and Data Management (W)                                 | 3         |
| <a href="#"><u>GSS 210</u></a>                                     | Popular representations of Queer sexualities                                     | 3         |
| Major Elective (*)   |  | 3         |

|                                |   |            |
|--------------------------------|---|------------|
| Elective                       |   | 3          |
| Elective                       |   | 3          |
| <b>Credit Hours</b>            |   | <b>15</b>  |
| <b>SPRING</b>                  |   |            |
| <a href="#"><u>BPH 305</u></a> | Issues in Health Disparities            | 3          |
| <a href="#"><u>BPH 490</u></a> | Field Practicum in Community Health (W) | 4          |
| Elective                       |   | 3          |
| Elective                       |   | 3          |
| Elective                       |   | 3          |
| <b>Credit Hours</b>            |   | <b>16</b>  |
| <b>Total Credit Hours</b>      |   | <b>121</b> |

(W) = Course is designated as writing-intensive

(\*) = Students may choose an elective from the following

courses: [APY 205](#), [BPH 301](#), [BPH 303](#), [BPH 306](#), [BPH 317](#), [BPH 319](#), [BPH 355](#), [BPH 365](#), [BPH 402](#), [BPH 419](#), [BPH 461](#), [BPH 487](#), [BTE 450](#), [HMP 460](#), [COS 324](#), [COS 325](#), [COS 426](#), [COS 427](#), [COS 472](#), [GEG 231](#), [GEG 241](#), [GEG 334](#), [GEG 336](#), [GEG 341](#), [GEG 343](#), [GEG 345](#), [GEG 346](#), [GEG 348](#), [GEG 366](#), [GEG 412](#), [INS 570](#), [INS 571](#), [INS 572](#), [INS 573](#), [INS 599](#), [KIN 155](#), [HMP 270](#), [MKT 388](#), and [SOC 480](#)

# **APPENDIX C**

## **Minor in Public Health Requirements**

## Public Health Minor

A minor in Public Health is offered. The minor in Public Health consists of 12 credits including: **BPH 206 Introduction to Public Health** (3 credits), **BPH 208 Introductory Epidemiology** (3 credits), plus two **Public Health electives** from the list below:

|                                |   |
|--------------------------------|---|
| <a href="#"><u>APY 205</u></a> | Medicine and Health Care in Society                       |
| <a href="#"><u>BPH 301</u></a> | Human Sexuality and Vulnerable Populations                |
| <a href="#"><u>BPH 303</u></a> | HIV/AIDS and Health Maintenance for Health Care Providers |
| <a href="#"><u>BPH 305</u></a> | Issues in Health Disparities                              |
| <a href="#"><u>BPH 306</u></a> | Principles of Nutrition                                   |
| <a href="#"><u>BPH 309</u></a> | Health and Environment                                    |
| <a href="#"><u>BPH 310</u></a> | Global Health   |
| <a href="#"><u>BPH 317</u></a> | Theories in Growth and Development                        |
| <a href="#"><u>BPH 319</u></a> | Contemporary Issues in Bioethics for Health Care          |
| <a href="#"><u>BPH 321</u></a> | Health Promotion and Disease Prevention                   |
| <a href="#"><u>BPH 322</u></a> | Introduction to Health Policy                             |
| <a href="#"><u>BPH 352</u></a> | Biological Principles of Public Health                    |
| <a href="#"><u>BPH 355</u></a> | Global Nutrition  |
| <a href="#"><u>BPH 365</u></a> | Research Methods in Public Health                         |
| <a href="#"><u>BPH 402</u></a> | Global Health Disparities Research                        |
| <a href="#"><u>BPH 419</u></a> | Contemporary Health Issues in South Florida               |
| <a href="#"><u>BPH 461</u></a> | Practicum in Health Disparities Research                  |
| <a href="#"><u>BPH 465</u></a> | Public Health Statistics and Data Management              |
| <a href="#"><u>BPH 487</u></a> | Global Health Practicum                                   |
| <a href="#"><u>BTE 450</u></a> | Introduction to Health Informatics                        |
| <a href="#"><u>HMP 460</u></a> | Health Care Law and Ethics                                |
| <a href="#"><u>COS 324</u></a> | Health Communication                                      |
| <a href="#"><u>COS 325</u></a> | Communication in Health Organization                      |
| <a href="#"><u>COS 426</u></a> | Patient-Provider Communication                            |
| <a href="#"><u>COS 427</u></a> | Health Behavior and Risk                                  |
| <a href="#"><u>COS 472</u></a> | Persuasion  |
| <a href="#"><u>GEG 231</u></a> | Environmental Geography                                   |

|                                |   |
|--------------------------------|---|
| <a href="#"><u>GEG 241</u></a> | Health and Medical Geography                        |
| <a href="#"><u>GEG 334</u></a> | Biogeography and Conservation                       |
| <a href="#"><u>GEG 336</u></a> | Hazards and Disasters: The Nature-Society Interface |
| <a href="#"><u>GEG 341</u></a> | Population, Health, and Environment                 |
| <a href="#"><u>GEG 343</u></a> | Population, Sustainability, and the Media           |
| <a href="#"><u>GEG 345</u></a> | Global Water Security Sustainability                |
| <a href="#"><u>GEG 346</u></a> | Immigrant and Refugee Health                        |
| <a href="#"><u>GEG 348</u></a> | Climate Change and Public Health                    |
| <a href="#"><u>GEG 366</u></a> | Cities in Time and Space                            |
| <a href="#"><u>GEG 412</u></a> | GIS for Health and Environment                      |
| <a href="#"><u>INS 570</u></a> | Globalization and Health                            |
| <a href="#"><u>INS 571</u></a> | Global Health and International Development         |
| <a href="#"><u>INS 572</u></a> | Global Health Policy and Ethics                     |
| <a href="#"><u>INS 573</u></a> | Disasters, Terrorism and Global Public Health       |
| <a href="#"><u>INS 599</u></a> | Special Topics                                      |
| <a href="#"><u>KIN 155</u></a> | Biological Bases for Physical Activity and Health   |
| <a href="#"><u>HMP 270</u></a> | Introduction to Health Management and Policy        |
| <a href="#"><u>MKT 388</u></a> | Health Care Marketing                               |
| <a href="#"><u>SOC 480</u></a> | Health Disparities in the U.S.                      |



# **APPENDIX D**

## **Minor in Health Communication Requirements**

## **Health Communication Minor**

A joint minor in Health Communication is offered in conjunction with the School of Communication. The Health Communication minor consists of 15 credits as detailed below:

### **Required Core Courses (6 credits)**

- Health Communication – COS 324 (3 credits)
- Public Health – BPH 206 (3 credits)

6 additional credits in Communication Studies (COS) from the courses listed below:

- COS 325 Communication in Health Organizations (3 credits)
- COS 426 Patient-Provider Communication (3 credits)
- COS 427 Health Behavior and Risk (3 credits)
- COS 472 Persuasion (3 credits)

3 additional credits in Public Health (BPH) from the courses listed below:

- BPH 305 Issues in Health Disparities (3 credits)
- BPH 310 Global Health (3 credits)
- BPH 321 Health Promotion and Disease Prevention (3 credits)
- BPH 322 Introduction to Health Policy (3 credits)

A grade of C or higher is required in all courses (a grade of C- or lower is not acceptable for minor). Minimum UM GPA of 2.0 required to declare minor.

For further information, please contact the Office of Student Services at 305-284-4325 or via email at <https://www.sonhs.miami.edu/admissions-and-student-services/office-of-student-services/index.html>

# **APPENDIX E**

## **BSPH to MPH/MSPH 4 + 1 Program**

## **Bachelor of Science in Public Health (BSPH) to Master of Public Health (MPH)/M.S. in Public Health (MSPH) 4 +1 Program**

The School of Nursing and Health Studies (SONHS) and the Graduate Programs in Public Health at the University of Miami Miller School of Medicine have developed a Bachelor of Science in Public Health (BSPH) to a Master's in Public Health (MPH) or M.S. in Public Health (MSPH) 4 + 1 program.

### **Program Highlights:**

- Undergraduate students enrolled in the BSPH program in the SONHS who qualify academically may apply to the MPH or MSPH program in the spring of their junior year.
- Accepted students are then able to take 12 credits of Master's level Public Health courses in their senior year. These Master's level credits would count toward their MPH or MSPH degree.
- By completing 3-6 credits of Master's level MPH or MSPH coursework in the summer following completion of their BSPH degree, students could complete their MPH or MSPH degree in only one additional academic year.
- The Graduate Programs in Public Health will waive the cost for the 12 credits of graduate courses taken during the senior year. Students accepted to the 4 +1 program will continue to pay undergraduate tuition for the senior year.
- Upon graduation with the BSPH, accepted students will then matriculate into the MPH or MSPH program and complete the remaining 33 credits of MPH or MSPH coursework at UM graduate school tuition rates.

### **Admissions Criteria:**

- BSPH students must have an overall undergraduate GPA of at least a 3.0 at the time of application to be considered. Accepted students who do not maintain a GPA of 3.0 for the remainder of their undergraduate coursework are subject to re-evaluation.
- GRE scores are not required for University of Miami undergraduates who apply to the 5-year BSPH + MPH program.
- Admissions decisions to the graduate program will be made solely by the admissions committee for the Graduate Programs in Public Health at the Miller School of Medicine.
- BSPH students taking master's level public health courses in their senior year must obtain a grade of B or better in these courses in order for them to count towards the graduate degree.

# **APPENDIX F**

## **BSHS to MPH/MSPH 4 + 1 Program**

## **Bachelor of Science in Health Science (BSHS) to Master of Public Health (MPH)/M.S. in Public Health (MSPH) 4 +1 Program**

The School of Nursing and Health Studies (SONHS) and the Graduate Programs in Public Health at the University of Miami Miller School of Medicine have developed a Bachelor of Science in Health Science (BSHS) to a Master's in Public Health (MPH) or M.S. in Public Health (MSPH) 4 + 1 program.

### **Program Highlights:**

- Undergraduate students enrolled in the BSHS program in the SONHS who qualify academically may apply to the MPH or MSPH program in the spring of their junior year.
- Accepted students are then able to take 12 credits of Master's level Public Health courses in their senior year. These Master's level credits would count toward their MPH or MSPH degree.
- By completing 3-6 credits of Master's level MPH or MSPH coursework in the summer following completion of their BSHS degree, students could complete their MPH or MSPH degree in only one additional academic year.
- The Graduate Programs in Public Health will waive the cost for the 12 credits of graduate courses taken during the senior year. Students accepted to the 4 +1 program will continue to pay undergraduate tuition for the senior year.
- Upon graduation with the BSHS, accepted students will then matriculate into the MPH or MSPH program and complete the remaining 33 credits of MPH or MSPH coursework at UM graduate school tuition rates.

### **Admissions Criteria:**

- BSHS students must have an overall undergraduate GPA of at least a 3.0 at the time of application to be considered. Accepted students who do not maintain a GPA of 3.0 for the remainder of their undergraduate coursework are subject to re-evaluation.
- GRE scores are not required for University of Miami undergraduates who apply to the 5-year BSHS + MPH program.
- Admissions decisions to the graduate program will be made solely by the admissions committee for the Graduate Programs in Public Health at the Miller School of Medicine.
- BSHS students taking master's level public health courses in their senior year must obtain a grade of B or better in these courses in order for them to count towards the graduate degree.

# **APPENDIX G**

## **Release for International Study Forms**



**Release, Indemnification of All Claims and Covenant Not to Sue  
For International Study**

I hereby acknowledge and agree that participation in the program to the country(ies) of \_\_\_\_\_ is not required by the University of Miami ("UM") and I further understand that UM does not control or run every aspect of the program. I acknowledge that I am ultimately responsible for my own safety and that UM has a very limited obligation to provide supervision and oversight for my safety on the program. My decision to participate in the program is completely voluntary. I have full knowledge of the nature and extent of the risks associated with travel to the foreign country including:

All manner of injury resulting from or associated with transportation to and from the foreign country. All manner of injury resulting from or associated with traveling and residing in a foreign country, including but not limited to detention, annoyance, quarantine, strikes, failure of conveyances to move as scheduled, civil disturbances, criminal acts such as thefts, kidnapping, assault and robbery, injury to my person or property, Acts of God, fire, unfamiliar cultures, languages and traditions, political instability, outbreak of war and violence, terrorism, diseases and health hazards. All manner of injury resulting from or associated with staying in a location and participating in an program that is not owned nor operated by UM, including injuries that may occur due to the use of different standards of care regarding bloodborne and airborne pathogens, as well as different standards of care applied to other areas of medical practice. All manner of injury resulting from the use of any vehicle, the occurrence of strikes, war, governmental restrictions or regulations, or the acts of omissions of any water carrier, airline, railroad, bus company, taxi service, hotel, restaurant, school, university, or any other firm, agency, company, or personal injury, property damage, death or accident of any kind, arising out of or in any way related to my participation in the program, whether I am being supervised or not, and however the injury or damage is caused, including but not limited to the negligence of UM.

I acknowledge that the above is not inclusive of all possible risks associated with my participation in the program and that the above in no way limits the extent or reach of this release and covenant not to sue. I further acknowledge that I am voluntarily assuming these risks.

I acknowledge that UM assumes no responsibility and liability for the conduct, activities and travel plans of students prior to the commencement of the program and after the conclusion of the program.

In consideration of UM permitting me to participate in the program, I hereby waive and release UM, its agents and employees from and against all claims or causes of action which I may have, now or in the future, relating to any injury, loss damage, accident, delay or expense. I hereby agree to exonerate, indemnify and hold UM, its agents and employees harmless from and against any and all obligations or liabilities for which I may become liable as the result of damage or injury to the person or property of others while participating in the program. I expressly



acknowledge and agree that UM, its agents and employees shall not be responsible for any injury or loss whatsoever suffered by me during a period of independent travel while in the foreign country or during any absence from activities supervised by UM.

I further waive and release on behalf of myself, my heirs, representative, executors, administrator and assigns, UM, its officers, agents, and employees from any cause of action, claim, demand, loss, delay, expense or cost of any nature whatsoever, which I, my heirs, representatives, executors, administrators and assigns may have now or in the future against UM on account of participation in the program.

I understand that I will be solely responsible for any loss or damage including death, I sustain while participating in the program and by this agreement I am relieving UM of any and all liability for such loss, damage or death.

During my participation in the program, I hereby grant UM, its employees and agents full authority to take whatever actions they may consider to be warranted under the circumstances regarding the protection of my health and safety and I hereby release each of them from any liability for any such decisions or actions as may be taken by them in connection therewith. The authority granted in the preceding sentence shall include the right to place me at my own expense, and without further consent, in a hospital, within or outside the United States, for medical services and treatment or if no hospital is readily accessible, to place me in the hands of a local medical doctor for treatment. If it is deemed necessary or desirable by UM, its employees or agents, I authorize them to transport me back to the United State by commercial airline or otherwise at my own expense for medical treatment.

I hereby certify that I am in good health and that I have no physical or psychological limitations that would preclude my safe participation in the program. I further certify that I have or will secure health insurance to provide adequate coverage for any injuries and/or illnesses that I may sustain or experience while participating in the program, including coverage for medical evacuation and repatriation of remains. By my signature below, I certify that I have confirmed that my health care coverage will adequately cover me while outside the United States, and I hereby release UM and its employees and agents, from any and all responsibility and/or liability for health care costs and other expenses for injuries or illnesses, including death, that I may incur.

I agree that should any portion or aspect of this release be found to be unenforceable, that all remaining portions will remain in full force and effect. I agree that, should there be any dispute concerning my participation in the programs that would require adjudication by a court of law, such adjudication will occur in the courts of, and be determined by, the laws of the State of Florida.

I have completed the requirements set out in **the Guidelines for International Study to Promote the Health and Safety of Students** and have completed and submitted the **Emergency Contact Form** to UM. Furthermore, if I am under eighteen (18) years of age, I have submitted the completed **Consent and Release of Next of Kin for Students Enrolled in International Study**.

I understand and agree to the following: Inherent to international travel and extended stays in

other countries is the constant possibility of changing circumstances. Circumstances may change as a result of changing conditions in the United States, the host country and/or the host institution. As a result, UM reserves the right to change the program's requirements, itinerary, accommodations, activities, and educational and non-educational programs offered. UM further *reserves the right to make any changes to the program to ensure the safety of the program's* participants and staff. In the event of any changes, no reimbursements will be offered.

I understand that the terms of this agreement are legally binding and that I am signing this agreement, after having carefully read it of my own free will and after having the right to consult with an advisor, counselor or attorney of my choice.

IN WITNESS WHEREOF, this instrument is duly executed in \_\_\_\_\_, \_\_\_\_\_  
(City) (State)

This \_\_\_\_\_ day of \_\_\_\_\_ 20\_\_\_\_.

\_\_\_\_\_  
Student – Name Printed

\_\_\_\_\_  
Witness – Name Printed

\_\_\_\_\_  
Student Signature

\_\_\_\_\_  
Witness Signature

## **Guidelines for International Study To Promote the Health and Safety of Students**

The University of Miami offers international study opportunity. In many cases, the countries where these activities take place present a variety of challenges and risks to students from the United States. It is imperative that students be prepared for these challenges and risks. These can include unfamiliar cultures, languages and traditions, political instability, outbreak of war and violence, terrorism, kidnapping, assault and robbery, diseases and health hazards that students are not normally faced with in the United States.

To prepare students for the challenges and risks presented in an international study program and to ensure that students can make informed decisions about travel, the University of Miami requires that all students engaged in a University-sponsored international program perform the following prior to departure from the United States:

1- Participate in cultural orientation and preparation for the trip.

2- Gather current information concerning any political problems or health hazards which may place them at risk. Complete the attached Completion Form and return to the University of Miami. This current information is to be gathered directly from the following sources:

U.S. State Department - Phone: 202-647-5225

Internet: <https://travel.state.gov/content/travel.html>

Centers for Disease Control - Phone: 404-639-3311

Internet: [www.cdc.gov/travel/travel.html](http://www.cdc.gov/travel/travel.html)

World Health Organization- Internet: <https://www.who.int/emergencies/diseases/novel-coronavirus-2019/travel-advice>

3- Register your trip with the U.S. State Department -

Internet: <https://step.state.gov/step/>

4- Obtain medical travel advice and immunizations appropriate for the country to which travel is planned.

5- Obtain medical and accident insurance with provisions for emergency evacuation and repatriation.

6-Designate persons both in the foreign country and in the U.S. who may be contacted in the event of an emergency.

Competency in the foreign language is strongly recommended. It is also strongly recommended that the student not take belongings he or she will regret losing.

**Guidelines for International Study  
To Promote the Health and Safety of Student  
Completion Form**

I, the undersigned student, have consulted with the following organizations regarding travel advisories to the country(ies) of \_\_\_\_\_

U.S. State Department:

Date of contact: \_\_\_\_\_

Date of registration: \_\_\_\_\_

Information obtained:

Centers for Disease Control:

Date of contact: \_\_\_\_\_

Information obtained:

World Health Organization:

Date of contact: \_\_\_\_\_

Information obtained:

It is necessary that all students going abroad on UM study abroad and exchange programs have adequate medical and accident coverage for the entire duration the student is abroad.

Review your insurance coverage carefully. Most medical providers require payment immediately for services rendered abroad; therefore, you must be prepared to make payment upon receiving medical services abroad. Please keep your receipt(s) and submit the receipt(s) to your insurance company for reimbursement. It is your responsibility to inform yourself of the coverage that your insurance policy provides and the procedures for reimbursement.

**Please attach a copy of your health insurance card.**

By signing this form I confirm that I have the necessary health coverage as stated above for the duration while I am abroad and that I have complied with the required pre-departure preparations as stated on page one of this form

Student Signature \_\_\_\_\_ Date \_\_\_\_\_

**Emergency Contact Form  
International Education and Exchange Programs**

Student Name: \_\_\_\_\_

Passport Number: \_\_\_\_\_

Student ID Number: \_\_\_\_\_

In the event that I am in danger, injured, incapacitated, suffer loss, damage or annoyance, as determined in the sole discretion of University of Miami personnel, I authorize the University of Miami to contact the following relatives or guardians:

\_\_\_\_\_  
Name:

\_\_\_\_\_  
Address:

\_\_\_\_\_  
Daytime Telephone:

\_\_\_\_\_  
Evening Telephone:

\_\_\_\_\_  
Cellular Telephone:

\_\_\_\_\_  
Pager Number:

\_\_\_\_\_  
E-mail address:

\_\_\_\_\_  
Name:

\_\_\_\_\_  
Address:

\_\_\_\_\_  
Daytime Telephone:

\_\_\_\_\_  
Evening Telephone:

\_\_\_\_\_  
Cellular Telephone:

\_\_\_\_\_  
Pager Number:

\_\_\_\_\_  
E-mail address:

Revised 2/01/2008

International Education and Exchange Programs  
P.O. Box 248263  
Coral Gables, Florida 33124-1610  
305-284-3434  
Fax: 305-284-4235  
e-mail: [ieep@miami.edu](mailto:ieep@miami.edu)  
[www.miami.edu/studyabroad](http://www.miami.edu/studyabroad)



## STUDENT TRAVEL INFORMATION FORM

Name: \_\_\_\_\_

Program: \_\_\_\_\_

Student Number: \_\_\_\_\_

### DEPARTURE FLIGHT

#### Departure:

Date: \_\_\_\_\_

City: \_\_\_\_\_

Airport: \_\_\_\_\_

Airline: \_\_\_\_\_

Flight Number: \_\_\_\_\_

Departure Time: \_\_\_\_\_

#### Arrival:

City: \_\_\_\_\_

Airport: \_\_\_\_\_

Airline: \_\_\_\_\_

Flight Number: \_\_\_\_\_

Arrival Date: \_\_\_\_\_

Arrival Time: \_\_\_\_\_

### RETURN FLIGHT

#### Departure:

Date: \_\_\_\_\_

City: \_\_\_\_\_

Airport: \_\_\_\_\_

Airline: \_\_\_\_\_

Flight Number: \_\_\_\_\_

Departure Time: \_\_\_\_\_

#### Arrival:

City: \_\_\_\_\_

Airport: \_\_\_\_\_

Airline: \_\_\_\_\_

Flight Number: \_\_\_\_\_

Arrival Date: \_\_\_\_\_

Arrival Time: \_\_\_\_\_

Revised 4/1/2005

## **APPENDIX H**

### **Students Requiring Academic Resource Assistance**

## STUDENTS REQUIRING ACADEMIC RESOURCE ASSISTANCE

### **Preface:**

Students with diagnosed learning disabilities should go to the Camner Center for Academic Resources:

Student Services Building, Second Floor  
1307 Stanford Drive  
Coral Gables, FL 33146  
305-284-2800

The SONHS subscribes to the following definition of Learning Disabilities:

"Learning disabilities are a general term that refers to a heterogeneous group of disorders manifested by significant difficulties in the acquisition and use of listening, spelling, reading, writing, reasoning, or mathematical abilities. These disorders are intrinsic to the individual, presumed to be due to central nervous system dysfunction, and may occur across the life span. Problems in self-regulatory behaviors, social perception, and social interaction may exist with learning disabilities but do not by themselves constitute a learning disability. Although learning disabilities may occur concomitantly with other handicapping conditions (for example, sensory impairment, mental retardation, serious emotional disturbance) or with extrinsic influences (such as cultural differences, insufficient or inappropriate instruction), they are not the result of those conditions or influences" (National Joint Committee on Learning Disabilities, p. 1, 1988),

This definition is aligned with the Americans with Disabilities Act (ADA, 1990) in which a disability is defined as a person with (1) physical or mental impairment that substantially limits one or more of the major life activities of such individual, (2) a record of such impairment; or (3) being regarded as having such an impairment.

### **Policy:**

It is the policy of the UM SONHS that students submit to a professional diagnostic evaluation for neuropsychological and psychoeducational functioning when there is evidence that academic performance is adversely affected. For students diagnosed with learning disabilities or cognitive deficits, the student shall provide a written report consisting of the comprehensive evaluation results, treatment recommendations and accommodation requests if applicable. This report is signed by a licensed credentialed neurological and/or psychoeducational provider and submitted to the Associate Dean for Undergraduate Programs. Reports are placed in the student's folder.



## **APPENDIX I**

SONHS Drug Testing Policy and Impaired Student Screening Policy

## **University of Miami School of Nursing and Health Studies Student Substance Abuse Policy**

### **Purpose**

The University of Miami School of Nursing and Health Studies prohibits the use or the possession or dissemination of narcotics or other mind-altering drugs, other than those medically prescribed, properly used, and in the original container, by students on University property or while on University business.

The purpose of this substance abuse policy is to provide information related to any unlawful use, manufacture, distribution, or possession of controlled or illegal substances or alcohol, and to ensure that individuals who provide patient care are not under the influence of any substances that can impair their ability or judgment. To that end, the School of Nursing and Health Studies (SONHS) at the University of Miami enforces a zero tolerance policy with regards to student impairment from drugs or alcohol at clinical sites or while in class, and thus **any unlawful possession, use, manufacture or distribution of controlled or illegal substances or alcohol by any student while on campus or at a clinical site shall be considered substance abuse or possible dependency and will constitute cause for termination from the program.** UM SONHS students are expected to read and comply with this Student Substance Abuse Policy. A signed copy of the policy is indication that the policy has been read and understood.

### **Drug Testing Policy**

All students will undergo drug testing as a part of their admission and continuing enrollment in the nursing school. A minimum of two 10 panel drug screens are required through American Data Bank. Due to the length of the program, SRNA students will have three 10 panel drug screens. The first test will be conducted at the time of admission, prior to starting classes, and at least one more test will be done during the students' tenure at the university. The drug screening process involves the collection of urine, blood, or hair sample to detect the presence of substances which may cause impairment.

When a student receives an e-mail from the School of Nursing and Health Studies directing him/her to be drug tested, the student must submit his/her specimen at a designated American Data Bank collection site or other designated drug screening location within 24 hours of notification. Students failing to submit a sample within this time frame may be withdrawn from clinical courses and subject to further disciplinary action, up to and including dismissal.

Students will be responsible for the cost of the drug screenings which are part of the background check that must be completed prior to admission, as well as for the cost of any future drug tests as requested by the school.

## **Reasonable Suspicion Testing**

Students enrolled in the School of Nursing and Health Studies must observe the aforementioned policies. A student may be required to undergo drug or alcohol screening if the student is suspected to be impaired from drugs or alcohol, at the discretion of a faculty member, clinical preceptor, clinical instructor, or school administrator.

## **Faculty and Clinical Preceptors Reporting Substance Abuse**

A faculty member suspecting possible substance abuse by a student must report the suspicious behavior immediately to the Director or designee verbally and by submission of the **Faculty Report of Suspicion of Drug/Alcohol Use reporting** form.

A student who is suspected of drug or alcohol impairment during didactic or clinical activities will be escorted to a testing center by an assigned representative of the SONHS. If a student becomes argumentative, resistant or violent with school or hospital representatives assigned to escort the student to the testing center, the escort (defined as a clinical coordinator/clinical instructor/preceptor/faculty member) can choose to notify the police department and the student will be dismissed from the grounds where the incident occurs. The Director or Associate Dean of the program in which the student is enrolled has the authority to temporarily suspend the student from clinical participation pending the final results of any tests.

If a student refuses to comply with the request from a faculty member, preceptor, instructor, or school administrator to undergo drug or alcohol screening, or refuses to participate in any of the steps listed below, the student may be dismissed from the University of Miami School of Nursing and Health Studies immediately.

## **Random Testing Procedure Steps**

- If not already completed, the student will sign the program's consent form. These are distributed when the student enrolls in the program, and the testing site will have them available as well.
- From the time that a student is suspected of being impaired or diverting medications, a clinical coordinator/clinical instructor/preceptor/faculty member at the facility will stay with the student. If the student leaves the facility or goes to the bathroom, the test will be invalid because the chain of custody has been broken and the student may be dismissed from the program.
- If the student in question is an SRNA student, the escort will notify the CRNA faculty member on call. For all other students, the escort will notify the Associate Dean in charge of the student's program. A faculty member or administrator will go to the facility to pick up the student and transport him/her to UMH. Again, someone must be with the student at all times.
- The student will be tested at UMH. The student may be asked to provide a witnessed sample of urine, hair, blood, or saliva, which may be frozen for further testing. The student will have to provide a photo ID (driver's license or UM ID) and will have to provide his/her social security number. The student and the escort will go to Occupational

Health during regular business hours (Monday-Friday, 7 AM-5:30 PM). After regular business hours, the student and the escort will go directly to the lab ([305] 689-5446).

- The student will sign the chain of custody forms and any other documents provided by the testing laboratory.
- The sample will be screened for controlled substances or any other non-controlled substances suspected of being used or abused by the student.
- The student will disclose any prescribed or over-the-counter medications as well as any dietary habits that could modify testing results at the time of the testing, as requested by laboratory documents.
- The student must fully comply with the testing laboratory's methods and procedures for collecting samples.
- If a **non-negative** result is reported from the testing laboratory, the student may choose to admit to controlled substance misuse, in which case the student will be referred to appropriate treatment options, and be subject to disciplinary action.
- If a student disputes a non-negative test, and requests a retesting of samples by the laboratory, then the student will need to pay for the retest.

### **Drug Testing Outcomes**

All **non-negative** drug tests will be reported to the SONHS by American Data Bank, UMH, or other similar agencies/ institutions partnering with the School of Nursing and Health Studies.

Tests which are reported as **inconclusive**, **adulterated** or **diluted** may be considered as a **non-negative** test by the School of Nursing and Health Studies. A **non-negative** drug screen report at the time of admission may result in the student's admission offer being withdrawn and notification of the non-negative result to the Board of Nursing, according to the reporting requirements for registered professional nurses (464.018, Disciplinary actions, Florida Nurse Practice Act). If the student is already a registered professional nurse, they will be referred to the IPN program. If the student is not a registered professional nurse, they will be provided with a list of local treatment centers. The cost of any treatment will be borne by the student.

Students that have a **non-negative** drug test will be removed from all clinical courses and may be subject to further disciplinary actions, up to and including dismissal.

### **Students Reporting other Students' Substance Abuse**

A University of Miami School of Nursing and Health Studies student who suspects or has knowledge of possible substance abuse or policy violation by another student while in the clinical setting has the responsibility to report this information to the Program Director, Associate Dean, or Dean. The identity of the individual making the report will be kept confidential to the extent possible, consistent with the need to investigate the report and subject to legal requirements.

### **Prescription and Over the Counter Medication Reporting Requirements**

There are circumstances in which students may need to take over the counter or prescribed medications that may impair their ability to function safely in the clinical environment and

thereby endanger patients and the student. As such, all students are responsible for being aware of the effects these medications may have on their ability to function safely in the clinical practicum. If a clinical preceptor or faculty member establishes that the student is affected by the use of such prescribed medications, thereby creating a potential threat to patient care, the preceptor or faculty member will advise the student to leave the clinical area. Inability to perform all clinical functions safely while under the effects of prescribed medications will result in re-evaluation of student's ability to participate in clinical training and the student will be encouraged to request leave from clinical studies. **Students must notify the director regarding the use of any prescribed medication, other than antibiotics, within 72 hours of prescription**, and any over the counter medication which could impair performance prior to entering the clinical environment. If the student does not comply with this disclosure and has a subsequent non-negative drug screen, the student may be dismissed from the program.

### **Controlled Substances Handling and Accountability, Suspicion of Drug Diversion**

Accurate accounting of controlled substances and adherence to hospital, pharmacy and departmental policies are of utmost importance to all students. Common methods of drug diversion include setting aside drugs for personal use and falsifying the use of these drugs in the patient's record, recording a medication's vial as broken or wasted in the medication dispensing systems, and/or sending a substitute of the drug (placebo) back to the pharmacy as leftover medication. The SONHS nurse anesthesia program faculty members or clinical coordinators will conduct periodic audits of patient documentation, and students' management of typical anesthesia drugs utilized in the clinical area. This audit may include a chemical analysis of returned and wasted drugs, and or inspection of students' lockers and personal belongings in the clinical area. Frequent incidents of controlled and non-controlled substances mishandling, medication charting errors, or any other behaviors suspicious of drug diversion will be treated as reasonable suspicion for drug diversion and potentially lead to dismissal from the program.

### **Dismissal and Appeal:**

Dismissal and appeal policies for the School of Nursing and Health Studies are contained in the Student Handbooks. Please refer to the appropriate document for specific details.

### **Impaired Student Policy:**

For the safety of our students, patients, clients, and community, nursing students are subject to random drug testing. The following information is presented in response to compliance of regulations of "Drug-Free Schools and Campuses." Regulation: Sec. 1213 "Drug and Alcohol Abuse Prevention".

**Section 1213 Subpart B.a.1.** requires annual distribution to each student and employee of: "standards of conduct that clearly prohibit, at a minimum, the unlawful possession, use, or distribution of illicit drugs and alcohol by students and employees on its property or as part of any of its activities."

All students, faculty, administrators, and support staff are expected to recognize the potential for alcohol and drug abuse whenever illegal drugs or alcohol are sold, given, manufactured, and/or used and that such abuse is in conflict with the University's purpose. To mitigate abuse, the University has established policies and regulations which adhere to applicable federal laws,

including the U.S. Federal Drug Free Workplace Act and Florida statutes regarding such abuse. The regulations and policies governing the use of alcoholic beverages apply to all students, guests, and visitors on University property or as part of any University activity. The responsibility for knowing and abiding by the provisions of the University's beverage and drug policies rests with each individual.

**Section 1213 Subpart B.a.2.** requires: "a description of the applicable legal sanctions under local, state, or federal law for the unlawful possession or distribution of illicit drugs and alcohol." The Florida State Statutes on drug and alcohol abuse are based upon and are consistent with current Federal Statutes, which are found in Titles 21 and 27 of the United States Code. The University of Miami adheres to Florida Statutes, Chapter 562, which detail the Florida Laws on alcoholic beverages and related penalties (misdemeanor, felony). These statutes include selling, giving or serving alcoholic beverages to persons under 21 years of age (562.11) and for possession of alcoholic beverages by persons under 21 years of age (562.111). It is unlawful for any person to misrepresent or misstate his or her age. This includes the manufacture or use of false identification. Use of altered identification for the purpose of procuring alcoholic beverages is a felony. It is unlawful for any person to consume or possess open containers of alcoholic beverages while in municipal parks, playgrounds, sidewalks or streets. It is unlawful for a person to be found in the state of intoxication on a street or public place while within the city limits. It is unlawful for a person to drive while under the influence of alcohol or other drugs. Penalties include: (a) a mandatory suspension of license for 90 days for the first conviction; (b) fines of up to \$500.00 for the first offense; (c) a minimum of 50 hours community service; (d) imprisonment of not more than six months.

The Florida Statutes, to which the University of Miami adheres with regard to drug abuse, are found in Florida Statutes, chapter 893. This chapter includes definitions of what constitutes illegal drugs, drug paraphernalia, prohibited activities, and related penalties. Conviction for the possession or distribution of illegal drugs or alcohol will result in various penalties according to the nature of the offense. This can include imprisonment, fines, confiscation of property, and other related penalties. A violation of State Law, which results in a conviction, will result in additional disciplinary action by the University.

According to Section 893.13 (1) Florida Statutes, it is unlawful for any person to sell, purchase, manufacture, or deliver, or to possess with the intent to sell, purchase, manufacture, or deliver, a controlled substance in, on, or within 200 feet of the real property comprising a public or private college, university, or other postsecondary educational institution. Individuals who violate this law commit a felony of the first degree and shall be sentenced to a minimum term of "imprisonment for three calendar years and shall not be eligible for parole or release under the Control Release Authority pursuant to s.947.146 or statutory gain-time under s.994.275 prior to serving such minimum sentence."

**Section 1213 Subpart B.a.3.** requires "a description of the health risks associated with the use of illicit drugs and the abuse of alcohol."

The following health risks are related to alcohol and drug abuse:

## **Alcohol**

Alcohol is a psychoactive or mind-altering drug. It can alter moods, cause changes in the body, and become habit forming. Alcohol depresses the central nervous system. Drinking too much causes slowed reactions, slurred speech, and sometimes unconsciousness. Alcohol works first on the part of the brain that controls inhibitions. A person does not have to be an alcoholic to have problems with alcohol. Every year, many individuals lose their lives in alcohol-related automobile accidents, drowning, and suicides. Serious health problems can and do occur before drinkers reach the stage of addiction or chronic use.

Some of the serious diseases associated with chronic alcohol use include alcoholism and cancer of the liver, stomach, colon, larynx, esophagus, and breast. Alcohol abuse also can lead to such serious physical problems as: damage to the brain, pancreas, and kidneys; high blood pressure, heart attacks, and strokes; alcoholic hepatitis and cirrhosis of the liver; stomach and duodenal ulcers, colitis, and irritable colon; impotence and infertility; birth defects and Fetal Alcohol Syndrome, which causes retardation, low birth weight, small head size, and limb abnormalities; premature aging; and a host of other disorders such as diminished immunity to disease, sleep disturbances, muscle cramps, and edema.

## **Marijuana**

The potency of the marijuana now available has increased more than 275% since 1980. For those who currently smoke marijuana, the dangers are much more serious than they were in the 1960's. There are more known cancer-causing agents in marijuana smoke than in cigarette smoke. In fact, because marijuana smokers try to hold the smoke in their lungs as long as possible, one marijuana cigarette can be as damaging to the lungs as four tobacco cigarettes.

Even small doses of marijuana can impair memory function, distort perception, hamper judgment, and diminish motor skills. Chronic marijuana use can cause brain damage and changes in the brain similar to those that occur during aging. Health effects also include accelerated heartbeat and, in some persons, increased blood pressure. These changes pose health risks for anyone, but particularly for people with abnormal heart and circulatory conditions, such as high blood pressure and hardening of the arteries.

Marijuana can also have a serious effect on reproduction. Some studies have shown that women who smoke marijuana during pregnancy may give birth to babies with defects similar to those seen in infants born with Fetal Alcohol Syndrome – for example, low body weight and small head size.

## **Cocaine**

Cocaine is one of the most powerfully addictive of the drugs of abuse, and it is a drug that can lead to death. No individual can predict whether or not he or she will become addicted or whether the next dose of cocaine will prove to be fatal. Cocaine can be snorted through the nose, smoked, or injected. Injecting cocaine, or injecting any drug, carries the added risk of contracting HIV infection if the user shares a hypodermic needle with a person already infected with HIV. Cocaine is a very strong stimulant to the central nervous system, including the brain. This drug produces an accelerated heart rate while at the same time constricting the blood vessels which are trying to handle the additional flow of blood. Pupils dilate and temperature and blood pressure rises. These physical changes may be accompanied by seizures, cardiac arrest,

respiratory arrest, or stroke. Nasal problems, including congestion and a runny nose occur with the use of cocaine, and with prolonged use the mucous membrane of the nose may disintegrate.

Heavy use of cocaine can sufficiently damage the nasal septum to cause it to collapse. Users often report being depressed when they are not using the drug and often resume use to alleviate further depression. In addition, cocaine users frequently find that they need more and more cocaine more often to generate the same level of stimulation. Therefore, any use can lead to addiction. “Freebase” is a form of cocaine that is smoked. Freebase is produced by a chemical process whereby street cocaine (cocaine hydrochloride) is converted to a pure base by removing the hydrochloride salt and some of the cutting agents. The end product is not water soluble, so the only way to get it into the system is to smoke it. The cocaine reaches the brain within seconds, resulting in a sudden and intense high. However, the euphoria quickly disappears, leaving the user with an enormous craving to freebase again and again. The user usually increases the dose and the frequency to satisfy this craving, which results in addiction and physical debilitation. “Crack” is the street name given to one form of freebase cocaine that comes in the form of small lumps or shavings. The term “crack” refers to the crackling sound made when the mixture is smoked (heated).

## **Heroin**

Heroin is an illegal opiate drug. The addictive properties of heroin are manifested by the need for persistent, repeated use of the drug (craving) and by the fact that attempts to stop using the drug leads to significant and painful physical withdrawal symptoms. Use of heroin causes physical and psychological problems such as shallow breathing, nausea, panic, insomnia, and a need for increasingly higher doses of the drug to get the same effect. Heroin exerts its primary addictive effect by activating many regions of the brain; the brain regions affected are responsible for producing both the pleasurable sensation of “reward” and physical dependence. Together, these actions account for the user’s loss of control and the drug’s habit-forming action.

Heroin is a drug that is primarily taken by injection with a needle in the vein. This form of use is called intravenous injection. This means of drug entry can have grave consequences. Uncertain dosage levels (due to differences in purity), the use of unsterile equipment, contamination of heroin with cutting agents, or the use of heroin in combination with such other drugs as alcohol or cocaine can cause serious health problems such as serum hepatitis, skin abscesses, inflammation of veins, and cardiac disease (sub-acute bacterial endocarditis). Of great importance, however, the user never knows whether the next dose will be unusually potent, leading to overdose, coma, and possible death. Heroin is responsible for many deaths. Needle sharing by IV drug users is one of the causes of HIV infection.

The signs and symptoms of heroin use include euphoria, drowsiness, respiratory depression (which can progress until breathing stops), constricted pupils, and nausea. Withdrawal symptoms include watery eyes, runny nose, yawning, loss of appetite, tremors, panic, chills, sweating, nausea, muscle cramps, and insomnia. Elevations in blood pressure, pulse, respiratory rate, and temperature occur as withdrawal progresses. Symptoms of a heroin overdose include shallow breathing, pinpoint pupils, clammy skin, convulsions, and coma.

## **PCP**



PCP is a hallucinogenic drug; that is, a drug that alters sensation, mood, and consciousness and that may distort hearing, touch, smell, or taste as well as visual sensation. It is legitimately used as an anesthetic for animals. When used by humans, PCP induces a profound departure from reality, which leaves the user capable of bizarre behavior and severe disorientation. These PCP induced effects may lead to serious injuries or death to the user while under the influence of the drug.

PCP produces feelings of mental depression in some individuals. When PCP is used regularly, memory, perception functions, concentration, and judgment are often disturbed. Used chronically, PCP may lead to permanent changes in cognitive ability (thinking), memory, and fine motor function.

### **Designer Drugs**

By modifying the chemical structure of certain drugs, underground chemists are now able to create what are called “designer drugs” – a label that incorrectly glamorizes them. They are, in fact, analogues of illegal substances. Frequently, these drugs can be much more potent than the original substances; therefore, they can produce much more toxic effects. Ecstasy for example, is a drug in the amphetamine family that, according to some users, produces an initial state of disorientation followed by a rush and then a mellow, sociable feeling. We now know however, that it also kills certain kinds of brain cells.

**Section 1213 Subpart a.4** requires “a description of any drug or alcohol counseling, treatment, or rehabilitation, or re-entry programs that are available to employees or students.” A list of some drug and alcohol prevention, counseling, treatment and rehabilitation, and re-entry programs are available at the Center for Alcohol and Other Drug Education located in Building 21-E, <http://www.miami.edu/sa/index.php/pier21/>. Additional programs may be listed in the local and other area telephone directories.

**Section 1213 Subpart B.a.5** requires “a clear statement that the institution will impose sanctions on students and employees (consistent with local, State and Federal law), and a description of those sanctions, up to and including expulsion or termination of employment and referral for prosecution for violations of the standards of conduct required by Section 1213 Subpart B.a.1.”

The University will impose sanctions for violation of the standards of conduct consistent with local, state, and federal laws, student and employee handbooks, and University policies. Violations will result in disciplinary action, up to and including termination of employment, expulsion, and referral for prosecution. Sanctions imposed will depend upon the severity and frequency of the violation. In addition to, or in lieu of discipline, violators may be required to complete an appropriate rehabilitation program.

Students enrolled in the School must observe the aforementioned policies. A student may be required to undergo drug or alcohol screening if he/she is suspected to be impaired from drugs or alcohol, at the discretion of a faculty, clinical preceptor, clinical instructor, or school administrators. **If a student refuses to comply with the request from a faculty, clinical preceptor, clinical instructor, or school administrator to undergo drug or alcohol screening, the student may be dismissed from the University of Miami School of Nursing**

**and Health Studies. A positive drug screen can result in dismissal from the University of Miami and the School of Nursing and Health Studies.**

## **APPENDIX J**

### **Hurricane Emergency Preparedness Information**

## Emergency Preparedness

Safety is a top priority at the University of Miami—and this Web site is your one-stop source for all up-to-date, official information concerning emergency preparations and operations at the University.

In South Florida, the annual hurricane season is a time to be prepared both on campus and at our homes. Should a storm threaten south Florida or some other emergency affect the University, members of the UM community should continually monitor this Web site for updated information. In addition, employees and students will receive the Storm Alert e-mail newsletter. These communications will keep you informed of developments on all campuses, such as class cancellations, event schedules, and closures. Local television and radio broadcasts will also provide updates on University operations.



The Hurricane Hotlines are another key source of information. They are updated frequently during emergencies like hurricanes and provide the latest information about University operations. Phone numbers for the hotlines and the UM Police Department/security are listed below.

In the event of an emergency, the University of Miami [Disaster Preparation and Recovery Plan](#) will be activated to ensure the safety of all campuses. At the direction of the Crisis Decision Team, the Emergency Operations Center is activated to receive and disseminate information to the University family and will be staffed with operators to assist callers. Students, faculty, or staff who are forced to evacuate or temporarily relocate can notify the University of their new location and contact information by going to [recover.miami.edu](http://recover.miami.edu).



The UM Emergency Notification Network is a comprehensive communications solution that allows the University to quickly disseminate an urgent message through multiple communication mediums including voice messages to cell, home and office phones, text messages to cell phones, email messages, emergency notification sirens, public address and loudspeaker messages in some dormitories and other buildings.

- [Emergency Notification Network](#)
- [Frequently Asked Questions \(FAQ\)](#)
- [Communication Methods](#)

The University Disaster Plan provides guidelines for handling any type of emergency that may arise—and much of the information in this flyer (particularly regarding police and communications) is applicable for those situations. Please remember—UM Police are available for any emergencies around the clock by calling **305-284-6666** on the Coral Gables campus. On the Miller School campus, call Security at **305-243-6000**, and on the Rosenstiel campus, call

**305-421-4766** (office) or **305-710-7991** (cell). There are also 105 emergency blue light phones which connect directly to police and security and are strategically located throughout the Coral Gables and Miller School campuses.

| UM Police Department / Security |                   |               |              |
|---------------------------------|-------------------|---------------|--------------|
| Campus                          | Hurricane Hotline | Non-Emergency | Emergency    |
| Coral Gables                    | 305-284-5151      | 305-284-6666  | 911          |
| Medical                         | 305-243-6079      | 305-243-7233  | 305-243-6000 |
| Rosenstiel (RSMAS)              | 305-421-4888      | 305-421-4766  | 305-710-7991 |
| South                           | 305-243-6079      | 305-243-7233  | 305-243-6000 |

**TOLL FREE HURRICANE HOTLINE IS 1-800-227-0354**

# **APPENDIX K**

## **University Student Support Services**

## UNIVERSITY SUPPORT SERVICES

|   |                              |
|---|------------------------------|
| Academic Resource Center .....                          | 305-284-2800                 |
| Accessibility Resources .....                           | 305-284-2374                 |
| Continuing Studies.....                                 | 305-284-4000                 |
| Counseling Center.....                                  | 305-284-5511                 |
| Undergraduate Financial Assistance and Employment ..... | 305-284-6000                 |
| Canes Central.....                                      | 305-284-4247                 |
| International Student and Scholar Services .....        | 305-284-2928                 |
| Math Laboratory .....                                   | mathlab@math.miami.edu       |
| <i>Miami Hurricane</i> .....                            | 305-284-4401                 |
| Multicultural Student Affairs.....                      | 305-284-2855                 |
| Public Safety .....                                     | 305-284-6666                 |
| Residence Halls Office .....                            | 305-284-4505                 |
| Rumor Control .....                                     | 305-284-5151                 |
| Student Accounts (Margaret John) .....                  | 305-284-6430                 |
| Student Activities.....                                 | 305-284-6399                 |
| Student Health Services .....                           | 305-284-9100                 |
| Student Life and University Center .....                | 305-284-2805                 |
| Testing Center .....                                    | 305-284-2450                 |
| Toppel Center for Career Planning and Placement.....    | 305-284-5451                 |
| Undergraduate Student Government.....                   | 305-284-3082                 |
| Wellness and Recreation .....                           | 305-284-8500                 |
| Hurricane Emergency Hot-Line                            |                              |
| Coral Gables Campus Rumor Control Hotline.....          | 305-284-5151                 |
| Medical Campus Rumor Control Hotline .....              | 305-243-6079                 |
| Rosenstiel Campus Emergency .....                       | 305-361-4888                 |
| Emergency Information Hotline.....                      | 800-227-0354                 |
| Hurricane (Weather) Announcements:.....                 | WVUM - FM - 90.5             |
| .....   | WIAZ - AM - 610              |
| .....   | WTAL - FM - 94.6             |
| Storm Updates.....                                      | www.miami.edu/prepare        |
| University of Miami Radio Station:.....                 | WVUM - FM - 90.5             |
| University Website: .....                               | www.miami.edu                |
| Writing Center .....                                    | 305-284-3090                 |
| University Chaplains:                                   |                              |
| St. Augustine Catholic Church/Student Center .....      | 305-661-1648                 |
| Baptist Campus Ministry .....                           | 305-284-6088 or 305-389-6933 |
| Christian Science Organization .....                    | 786-281-9860                 |
| Episcopal/Anglican Church .....                         | 305-284-2333                 |
| Hillel Jewish Student Center .....                      | 305-284-1840                 |
| Wesley Foundation (United Methodist) .....              | 305-284-1920                 |
| Muslim Student Ministry.....                            | 954-505-0701                 |
| Adventist Christian Fellowship.....                     | 305-785-3613                 |
| United Christian Fellowship.....                        | 305-742-5442                 |

## **APPENDIX L**

### **Student Handbook Acknowledgment Form**



**UNIVERSITY OF MIAMI  
SCHOOL OF NURSING AND HEALTH STUDIES  
STUDENT HANDBOOK ACKNOWLEDGMENT FORM**

I have been informed about the *2025-2026 student handbook* and am aware that I can access it via the official School of Nursing and Health Studies website. Go to <https://www.sonhs.miami.edu/academics/student-handbooks/index.html>,

Further, I am aware that it is my responsibility to read the *student handbook* and be aware of all the School of Nursing and Health Studies policies and procedures included therein.

Student Name: \_\_\_\_\_ Date: \_\_\_\_\_  
Print

Signature: \_\_\_\_\_